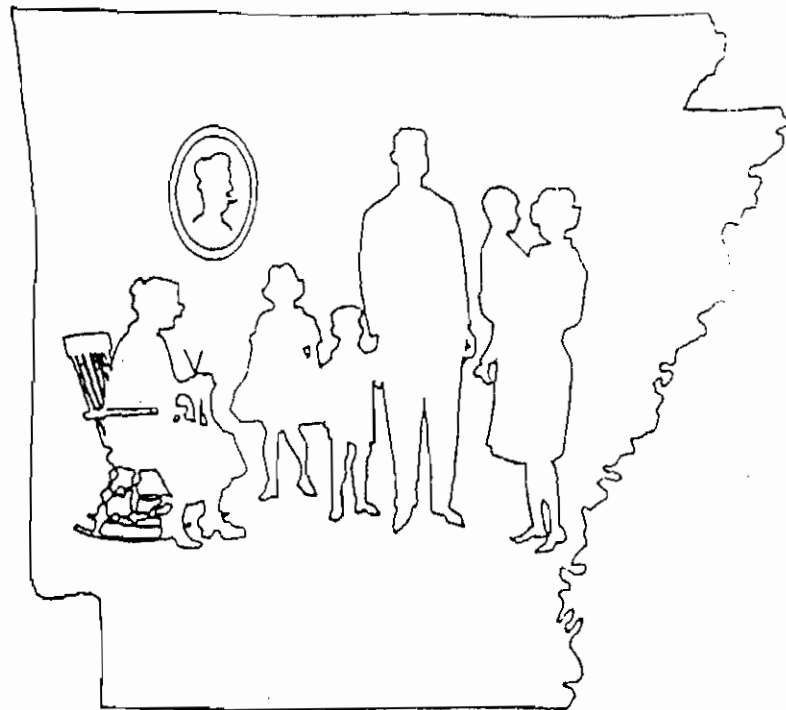


ISSN 0571-0472



*The
Arkansas
Family
Historian*

Arkansas Genealogical Society

Volume 39, Number 1

March 2001

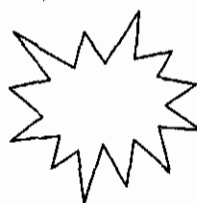
Arkansas Genealogical Society

Officers and Directors

| | | |
|----------------------------|---|--|
| President | Russell P. Baker (2003) | 6525 Magnolia, Mabelvale, AR 72103 |
| Vice President | Susan Gardner Boyle (2001) | 57 Plantation Acres Dr., Little Rock, AR 72210 |
| 2 ND Vice Pres. | Jan Hearn Davenport (2002) | 1 Cinnamon Rd., North Little Rock, AR 72120 |
| Treasurer | Bobbie Jones McLane (2003) | 222 McMahan Dr., Hot Springs, AR 71913 |
| Rec. Sec. | Dorathy Boulden (2003) | 913 Arkansas, El Dorado, AR 71730 |
| Historian | Wensil Marsh Clark (2001) | 1211 Biscayne Dr., Little Rock, AR 72221 |
| | Ed Sanders (2002) | 10 Choctaw Dr., Searcy, AR 72143-5906 |
| | Jan Eddleman (2002) | 1807 Sunshine Mine Rd., Hackett, AR 72937 |
| | Lynda Suffridge (2001) | 3801 Caraway Ct., North Little Rock, AR 72116 |
| | Mary Reid Warner (2002) | 18 Fastota Ln., Hot Springs, AR 71909 |
| | Louise Mitchell (2002) | PO Box 129, Brinkley, AR 72021-0129 |
| | Rhonda S. Norris (2002) | 805 East 5th St., Russellville, AR 72801 |
| | Glenn A. Railsback, III (2003) | PO Box 7226, Pine Bluff, AR 71611-7226 |
| | Rebecca D. Huskey (2003) | 1054 Ozment Bluff, Wilmar, AR 71675-9007 |
| | Susan Gardner Boyle (2001) | 57 Plantation Acres Dr., Little Rock, AR 72210 |
| | Arliss Ray (2001) | 500 Pakis Rd. No. 2B, Hot Springs, AR 71913 |
| | Jann Woodard (2001) | 12008 Ginger Ln., Benton, AR 72015 |
| | Debra Blackard (2003) | 350 Hillside D., Lamar, AR 72846 |
| | Carolyn Hervey (2001) | 2105 S. Martin, Little Rock, AR 72204 |
| Alvin Black (2001) | PO Box 1103, Mount Ida, AR 71957 | |
| Ann S. Cobb (2003) | 11106 Rocky Valley Dr., Little Rock, AR 72212 | |
| Linda McDowell (2003) | 14617 Sara Dr., Little Rock, AR 72206 | |

(term ending)

Editor Margaret Harrison Hubbard 1411 Shady Grove Rd., Hot Springs, AR 71901



The Arkansas Family Historian is the official publication of the Arkansas Genealogical Society. It is published quarterly by the society and entered in the mails under Postal Permit 418 at Conway, AR.

Individual membership rate is \$20.00 per calendar year. Four issues constitute one year's membership. Membership may be entered by submission of dues and enrollment data to Arkansas Genealogical Society, PO Box 908, Hot Springs, AR 71902-0908.

Neither the Arkansas Genealogical Society, the Board of Directors thereof, nor any individuals or committee assume any responsibility for information or materials included herein. Contributors of material are indicated, and any correspondence should be directed to those persons. Notify the Society of any needed corrections.

The Arkansas Family Historian

Published Quarterly by Arkansas Genealogical Society, Inc.
PO Box 908, Hot Springs, AR 71902-0908

Editor

Margaret Harrison Hubbard

Publication Information

The *Arkansas Family Historian*, the official publication of Arkansas Genealogical Society, Inc., is published four times a year: March, June, September and December. Commercial advertising is not accepted.

ISSN 0571-0472

Editorial Policy

AGS welcomes contributions of family records, public record transcriptions and other information of interest to those involved in family history and genealogy in general and in Arkansas specifically. Responsibility for the accuracy of information and for opinions, omissions and/or factual errors is that of the contributor.

Manuscript Submissions

Submitters of articles and material for possible publication in the AFH are requested to send typewritten or mechanically generated manuscripts on white 8-1/2 x 11 inch paper, double-spaced, one-inch margins on all sides, with all pages numbered. The sources from which the material was obtained, specific statements of fact, or statistical information MUST be documented; that is, the specific, detailed source description must be listed either within the body of the text or as notes. Previous publication of material in any form must be brought to the attention of AGS. AGS encourages submissions of IBM compatible computer disks in Word for Windows or ASCII format,

accompanied by a hard copy of the material.

Membership

Membership is by calendar year and may be entered at any time of the year. (Late subscribers will receive the year's back issues of the *Arkansas Family Historian*.) Individual membership is currently \$20.00 per year.

Queries

Members of AGS are invited to submit one fifty-word query each year. See the Query Section for details.

Book Reviews and Notices

Authors and publishers who wish to have reviews or notices of their work published in the *Arkansas Family Historian* are invited to submit a copy of the work, with ordering information and price, if applicable.

Contents

| | |
|---|----|
| President's Page | 2 |
| Treasurer's Report | 4 |
| Box 908 | 5 |
| Confederate POWs Alive at Rock Island | 8 |
| Newspaper Items-1914 | 9 |
| Princeton, Dallas County | 10 |
| Blackford Bible Record | 13 |
| Center Hill Cemetery, White County, AR | 14 |
| Abstracts from the <i>Huntington Hummer</i> , Sebastian Co. | 25 |
| Arkansas Queries | 31 |
| Book Reviews and Notices | 35 |
| Index | 41 |

President's Page

Feb. 19, 2001

WOW! The winter ice has melted, at last, and the spring flowers are pushing up through the ground. Interest in one's ancestral roots is also stirring. Genealogists across Arkansas are grabbing their notebooks and cameras and preparing for field trips to cemeteries, courthouses, and the Arkansas History Commission. Spring is an excellent time to pursue one's interest in Arkansas genealogy. During this season, one avoids the crowds of summer.

OUR MEMBERSHIP: Current AGS membership stands at about 700. Many are new members this year. Some have been added through the AGS's new advertising campaign in a number of good genealogical quarterlies across the county. We hope to be able to acquaint potential members with our services. If you are one of these new members, welcome to the world of Arkansas genealogy. If you are a former member who has just renewed, welcome back. Our goal is to produce a statewide genealogical publication, the *Arkansas Family Historian*, founded in 1962, that will help you as you search for your Arkansas ancestors, no matter where you live. Drop us a line and let us know if we are meeting this goal. Our good editor is always in need of new material. Why not sit down and write us an article about your family. Abstract deaths and marriages from a local Arkansas newspaper, visit an old cemetery and copy the information for us, or hunt out birth, death, and marriage information from an old Arkansas

church records and send us a copy. If you have not seen any information in print about the county you are interested in, send us some. The source of material for the vast majority of our articles comes from members just like you.

SOUND OFF: I am toying with the idea of starting a new feature for the President's Page. It might be called "Sounding Off" and would be a place where members could send questions of a general genealogical nature; where they could voice their opinions about genealogical related matters; make suggestions about genealogical research in Arkansas; or generally just sound off. If you are bubbling over with just this sort material, drop me a line at my home address below. Since I do not want to burden our Editor with added work, I will take care of this kind of material myself. Recently a member wrote taking us to task for not doing lots of "free" research for her, since she lived far away. Such organizations as ours provide a wide range of source material on Arkansas roots through our publications; however, we cannot do research for individual members. We do not maintain a research library; and have only a small volunteer staff. Nevertheless, we have collected the names and addresses of professional researchers who specialize in Arkansas research and will send it to members who send a SASE and request a copy.

THIS AND THAT:

The Arkansas Center for Oral and Visual History, Department of History, 416 Old Main, Fayetteville,

AR 72701 is collecting and preserving oral history material relating to Arkansas History. If you would like information on this new work, contact the Center.

The Historic New Orleans Collection of the New Orleans Public Library has recently signed an agreement that they hope will pave the way for computer access to the Library's large biographical and obituary index, a collection with some 650,000 entries. They cover the period from 1804 - 1945. Many Arkansas folks had business and family ties in New Orleans; and many died there. Easier access to this collection will be a boon to many genealogists.

The National Archives and Records Administration, 700 PA Ave., NW, Washington, DC 20408 has retired

its old NATF form 80 and has brought out two new forms: NATF form 85 for copies of federal pension and bounty land warrant information and NATF form 86 for copies of military service records. For more information, visit the National Archives' website at www.nara.gov. While there, be sure to check their new "NAIL" index. It contains some interesting Arkansas information. Good ancestor hunting, you all!

Russell P. Baker
6525 Magnolia Dr.
Mabelvale, AR 72103



Treasurer's Report

Arkansas Genealogical Society CY 2000

| | | |
|--|--------|------------|
| BALANCE (CHECKING ACCOUNT) 12-31-99 | | \$22,102 |
| INCOME | | |
| Dues, Books, etc. | 15,623 | |
| AGS Fall Conference | 6,617 | |
| Interest Earned | 123 | |
| Total Income | | \$22,363 |
| EXPENSES | | |
| Advertising Ads | 1,625 | |
| AFH Quarterly (Printing) | 4,048 | |
| AFH Newsletter | 1,526 | |
| Book Purchase | 65 | |
| Computer Purchase | 2,377 | |
| Conference | 4,742 | |
| CPA | 90 | |
| Delegate FGS | 150 | |
| Donation - Roots Web | 250 | |
| Dues | 85 | |
| Equipment Purchased | 2,200 | |
| Equipment Repair | 70 | |
| FGS Delegate | 150 | |
| Mailing AFH | 641 | |
| Mailing Services (Pre-Sort & Postage) | 519 | |
| Microfilm/fiche Service | 168 | |
| Newsletter & Mailing Services | 530 | |
| Postage | 1,866 | |
| Post Office Box Rental | 114 | |
| Printing (Misc.) | 256 | |
| Refunds | 35 | |
| Rental - Editor | 2,000 | |
| Returned Check | 20 | |
| Sharp Co. Cemetery Books | 320 | |
| Supplies | 778 | |
| Tax | 184 | |
| Telephone & FAX | 95 | |
| Webmaster | 703 | |
| Total Expenses | | \$25,605 |
| BALANCE IN CHECKING ACCOUNT AS OF 12-31-00 | | \$18,566 |
| Net Income (Loss) for Year | | (\$ 3,218) |
| BALANCE (Certificate of Deposit) 12-31-00 | | \$11,692 |
| Total Amount in Treasury, 12-31-00 | | \$30,258 |

Submitted by Bobbie Jones McLane, Treasurer

The 1930 U. S. Census is scheduled for release on 2 April 2002 at the National Archives in Washington, DC, and its branches.

Reunions

The Turnage Family America, 9815 East 29th St., Tulsa, OK 74129, has announced their 22nd reunion for July 20-22, 2001 in Tallahassee, FL. Contact them for particulars.

Seminars/Events

The 12th North Arkansas Ancestor Fair will be held May 31-June 2, 2001, at the Leslie Public School, Leslie, AR. Seminars and presentations will be May 31 and June 1, and on June 2 is the vast genealogical swap meet with book vendors on hand, as well as county and family historians. Contact James J. Johnston, 2333 N. East Oaks Dr., Fayetteville, AR 72703 for more information.

North Central Arkansas Ancestor Fair is set for April 7, 2001, from 10:00 a.m. until 2:00 p.m. in the Clinton High School Cafeteria, Clinton, AR. Contact Martha J. Kehoe, 510 Green Mountain Circle No. 97, Little Rock, AR 72211 for more information.

[See also page 12]

The National Park Service has announced a Land Records and Genealogy Symposium will be held at Homestead National Monument of America, stating that in anticipation of receiving microfilmed copies of nearly two million homestead records some time in the future, this

symposium is set for June 20-21, on the campus of Southeast Community College in Beatrice, Nebraska. The speakers will present numerous programs on homestead records, as well as immigration, Civil War and Sailors System database. For additional information contact Homestead National Monument of America, 8523 W. State Hwy. 4, Beatrice, NE 68310; email: toddarrington@nps.gov

The Iowa Genealogical Society will hold its Spring Conference on April 27-28, 2001, in the Sioux City Convention Center, Sioux City, IA. For further information contact them at PO Box 7735, Des Moines, IA 50322.

War Days In Helena An authentic Civil War encampment, featuring soldiers drilling, musket firing demonstrations and civilian life in a Mississippi River town during the war will be held March 31 and April 1, 2001, at the River Park in Helena, AR. Contact Main Street Helena, 870-338-9144 or the Delta Cultural Center at 870-338-4350 or email the Patrick Cleburne Society at info@patrickcleburne.com The Patrick Cleburne Society can be reached at PO Box 130817, Birmingham, AL 35213

The 2001 NGS Conference in the States will be held in Portland, Oregon, 16-19 May 2001, hosted by Genealogical Forum of Oregon, Inc. Contact NGS at 4527 17th St. North, Arlington, VA 22207-2399 for registration information.

The FGS/Quad Cities Conference is scheduled for 12-14 September

2001 at the River Center, Davenport, Iowa. Contact Federation of Genealogical Societies, PO Box 200940, Austin, TX 78720-0940 for more information.

Belle Starr's Funeral

Van Buren Press March 2, 1889
Belle Starr's Funeral Crawford County, Arkansas

Submitted by Fran Alverson Warren, 15529 White Water Road, Chester, AR 72934, who is compiling a volume of newspaper notices from her area. It will be announced in the *Arkansas Family Historian* when it is available.

BELLE STARR'S FUNERAL *Times*: A Fort Smithian who was in the neighborhood of Younger End where Belle Starr was killed was led by curiosity to attend her funeral and of which he gives the following account: The remains lay in a neat casket which was born by pall-bearers to the grave, where the lid was removed and the murdered woman was seen dressed in a neat suit of black silk, one of her crossed hands grasped the ivory handle of her favorite revolver. There were no religious services, the grim visaged attendants were heavily armed, and went about their work quietly. Each of them in accordance with the Indian custom placed a small piece of corn meal bread in the coffin, and then the lid was released and lowered, and scarcely had the grave been filled when James July, the dead woman's husband, who is a Creek, and not a Cherokee, and prefers to be called Starr, turned and approaching Watson, who with his wife was present, covered him

with a Winchester and ordered him to surrender. Many persons thought he was going to be killed. Watson and his wife were quiet and cool. Watson gave up and said if they killed him they would kill the wrong man. He asked some of the men present to stay with him, as he feared he would be killed if he was left with Starr, and they did so.

1917 Death and Marriage Notices from the *Arkansas Gazette*

Submitted by Jann Woodard, 12008 Ginger Lane, Benton, AR 72015

Arkansas Gazette Jan. 5, 1917
Deaths: Mrs. S. E. Mahle, at Stuttgart
Alfred Whetzel, at Mammoth Springs
Mrs. G. C. Bandy, at Mineral Springs
Miss Jennie Trout, at Kibler
Mrs. Francisca Geldrich, at Mammoth Springs
Mrs. I. H. Browne, at Keo
J. S. Slavens, at Van Buren

Marriages:

Samuel Cambron and Miss Vera Clements, near Dilworth
Richard Kennedy and Miss Bessie Thomas, at Murfreesboro
Everett Blevens and Miss Cleffie Griffith, near Pilot
C. R. Jones and Miss Jane Robinson, at Neal Springs

January 10, 1917: Deaths:
Mrs. Minnie Johnston, at Springdale
Mrs. Stella Moser, at Evening Shade
R. M. Head, near Pea Ridge
Mrs. Dan McCurry, at Mountain View
Mrs. May Pogue, at Wiseman
Hugh Dodd, at Brooking
John Boles, at Mountain Home

John Davis, near New Town
Mrs. Jack Boyles, at Midland
Otto Foster, at Hoxie
S. E. Spain, at Mansfield
J. B. Coffman, near Bellefonte
Gate I. Bullen, near Wilmot
Mrs. Francis Lewis, at Mt. Holly
J. B. Morton, at Washington
John H. Moses, at Hope

Marriages:

George Vest and Miss Alta
Lawrence, at Cecil
Rev. Harry King and Mrs. Helen
Martin Hall, at Batesville
Frank May and Miss Margaret
Stephens, near Blevins
Fulton Clark and Miss Lonnie Mays,
near Blevins
Sidney Nash and Miss May Osborne,
at Walnut Ridge
Walter R. Williams and Miss Clara
Louise Nemnich, at Walnut Ridge
R. E. McLelland and Miss Georgia
Johnson, at El Dorado
Elmer Nancy and Miss Lucy
Churchill, at Black Rock
Fred Gantt and Miss Bettie Teaffe,
at Foreman
S. M. Cochran and Mrs. Loretta
Lowe, at Shoal Creek
Kelly Harris and Miss Susie King, at
Magnolia
H. C. Cole and Miss Mattie Gillihan,
at Jonesboro
Loyd Owen and Miss Myrtle Kyle, at
Brister
A. B. Talton and Miss Alein
Hastings, at Grady
J. S. Redus and Miss Rena Bird, at
Magnolia
Joe Nipper and Miss Lucy Keith, at
Dorcheat
Ralph Dugger and Miss Mae Brady,
at Miller
Peter J. Files and Miss Julia
Bowers, at Heber Springs
Robert Huff and Miss Pearl Schales,
at Sitka

Austin Cleghorn and Miss Bertha
Chadwick, at Wiseman
Charles Smith and Miss Amanda
Stewart of Pleasant Ridge, at Rogers
Lee Jones and Miss Hazel Moses, at
Fairmont
Edgar Arnn and Miss Artie Bone, at
Sidney
Bud Kirsey and Miss Della
Wiseman, at Wiseman
J. R. Stewart and Miss Georgia
Boone, at Springdale
L. M. Brumfield and Miss Ora
Hickman at Springdale
Oscar Gillet and Miss Mary Latham
at Springdale

Jan. 14, 1917: Deaths:

William T. Edmonds, at DeVall's
Bluff
E. B. Worth, at Wirth
J. J. Huffman, at Smyrna
George McGee, at Pea Ridge
Mrs. Sarah Williams, near Marion
Billie McDaniel, at Hollywood
Miss Etta Neighbors, at Benton
A. R. Hill, at Booneville
Miss Gracie Clark, near Post Oak

Marriages:

Carrie Roman and Miss Rosie
Cossy, at Union Hill
L. R. Reynolds and Miss Marie Jane
Hanson, at Judsonia
Will Harrington and Miss Myra
Monzingo, at Magnolia
William McClain and Mrs. Bessie
Baker, at Baker Hill
Frank Riggins and Mrs. Nance
Owen, at Clear Creek
Rome McQuary and Miss Dora
Dunkin, at Bethlehem
E. W. Roberts and Mrs. Lummie
Fulmer, at McNeil
Henry Albright and Miss Bernice
Wilkerson, at Plainview
John Lee and Miss Julia Mount, at
Mena

Confederate Prisoners of War Still Alive at Rock Island, IL, at the end of the Civil War

Submitted by Russell P. Baker, 6525 Magnolia, Mabelvale, AR 72103

Infantry:

| Name | Co.& Reg. | Where captured | Captured | Confined | Released |
|------------------|-----------|--------------------------------|------------|------------|---------------------------------|
| McArdo, Geo. | W.G-1 | Shelbyville, TN | 07/27/1863 | 01/24/1864 | 05/16/1865 |
| McCall, Wm. | B-2 | Cherokee, KS | 10/25/1864 | 12/09/1864 | 05/24/1865 |
| Safford, E.C. | A-2 | Pulaski, TN | 12/25/1864 | 02/17/1865 | 06/22/1865 |
| Klein, Lewis | F-3 | Rutledge, TN | 12/08/1863 | 06/26/1864 | 04/21/1865 |
| Bradahan, I. | D-5 | Graysville, GA | 11/27/1863 | 12/14/1863 | 05/25/1865 |
| Calhoo(u)n, W. | B.D-5 | Graysville, GA | 11/27/1863 | 12/14/1863 | 05/20/1865 |
| Clayton, T. J. | G.D-5 | Graysville, GA | 11/27/1863 | 12/14/1863 | 05/20/1865 |
| Shirey, L. | C-5 | Pulaski, TN | 12/25/1864 | 02/17/1865 | 05/18/1865 |
| Tibbitt, Jno. W. | I-5 | Dallas, GA | 05/31/1864 | 06/16/1864 | 05/16/1865 |
| Renzel, Chas. | F.A-6 | Chicamauqua, TN | 09/20/1863 | 02/01/1864 | 06/19/1865 |
| Cox, J. C. | K-7 | Franklin, TN | 12/16/1864 | 02/17/1865 | 06/27/1865 |
| Irwin, Jas. | C-7 | Austin, AR | 07/29/1864 | 11/24/1864 | 04/07/1865 |
| McClain, J. C. | B-11 | Natchez, MS | 07/25/1864 | 11/04/1864 | Apr. 7 dead Hosp. 05/24/1865 |
| Siratt, N. M. | C-11 | Rockport, AR | 07/09/1863 | 07/06/1864 | 05/16/1865 |
| Terry, R. | K-11 | Salem County AR (Saline?) | 08/05/1864 | 12/06/1864 | 04/26/1865 Dead |
| Connell, W. M. | F-15 | Graysville, GA | 11/27/1863 | 12/15/1863 | 06/18/1865 |
| Clark, R. M. | E-15 | Graysville, GA | 11/26/1863 | 12/13/1863 | 06/19/1865 Exchanged |
| Dial, N. | G-15 | Calhain County, AR Calhoun? | 04/08/1864 | 07/06/1864 | 05/16/1865 |
| Hardin, W. | D-15 | Graysville, GA | 11/16/1863 | 12/14/1863 | 05/25/1865 |
| Monroe, B. F. | H-15 | Pulaski, TN | 12/25/1864 | 02/17/1865 | 05/12/1865 |
| Keartly, J. B. | I-16 | Madison County, AR | 10/31/1863 | 12/08/1864 | 06/21/1865 |
| Sammons, B. M. | A-25 | Randolph, AR | 11/25/1864 | 12/03/1864 | 05/25/1865 |
| Baige, Jack | K-31 | Melville, MO | 10/15/1864 | 11/24/1864 | 05/26/1865 |
| Brents, J. P. | G-45 | Lexington, MO | 10/20/1864 | 11/24/1864 | 05/25/1865 |
| Holdridge, Jas. | K-45 | near Springfield, MO | 10/25/1863 | 11/24/1863 | 05/24/1865 |
| Willis, J. M. | K-45 | Springfield, MO | 10/30/1864 | 11/24/1864 | 05/23/1865 |
| Martin, B. F. | G-48 | White County, AR | 08/16/1864 | 12/09/1864 | 05/25/1865 |
| Pickens, J. T. | G-48 | White County, AR | 08/14/1864 | 12/08/1864 | 05/22/1865 |

Cavalry:

| | | | | | |
|-------------------|------|-----------------------------------|------------|------------|--------------------|
| Helms, J. M. | E-7 | Hot Springs, AR | 09/13/1863 | 12/09/1863 | 06/01/1865 Dead |
| Walker, D. J. | D-1 | Jefferson City, MO | 10/09/1864 | 11/27/1864 | 04/12/1865 |
| Barnes, E. | F-8 | Stone County, MO | 10/30/1864 | 11/24/1864 | 05/22/1865 |
| Brightwell, E. | F-8 | Indepent, AR Independence Co.? | 11/14/1863 | 05/27/1864 | 05/22/1865 |
| Kinebourgh, J. J. | H-8 | Missionary Ridge, TN | 11/25/1863 | 12/18/1863 | 05/12/1865 |
| Sammons, Jas. | K-45 | Mt. Vernon, MO | 10/25/1864 | 11/24/1864 | 05/24/1865 |

| | | | |
|---|------------|------------|------------------------|
| Smith, J. W. H-47 White County, TN | 09/03/1864 | 12/09/1864 | 05/23/1865 Frontier |
| Reeves, Jno. A.A-1 Cav. Drew County, AR | 03/29/1864 | 07/06/1864 | 05/16/1865 |
| Sterman, W. M.B-1 Jefferson County, AR | 08/20/1864 | 12/09/1854 | 05/16/1865 |
| Roadlander, R. C.A-7 Ringold, GA | 11/28/1863 | 12/13/1863 | 05/24/1865 Hosp. |
| Smith, W. D.E. AR Reg. Missouri MO | 10/24/1864 | 11/24/1864 | 05/26/1865 |
| Dial, M. G-1 Art. Kansas (Monroe) | 10/25/1864 | 12/29/1864 | 06/18/1865 |

OLD NEWSPAPER ITEMS

Feb. 27, 1914: Fort Smith - Not until the remains of John Kemp, member of a pioneer family of this city, arrived here yesterday from Willmur, Minn., did it become known that Kemp was killed in a railroad wreck on the Great Northern road near that city last week. Kemp was a conductor and a son of a former city marshal.

Feb. 27, 1914 Fort Smith Miss Mary Moore of Van Buren and Edward Morgan Price of Kansas City were married last night at Trinity Episcopal church in Van Buren.

Feb. 27, 1914 - Bald Knob - Miss Lucile Clark, daughter of Dr. and Mrs. W.A. Clark of this place, and O. J. Clark of Little Rock were married here Sunday by the Rev. Mr. Forrest. They were not related.

Feb. 27, 1914 Paragould - A team driven by George Whitehead of the Caldwell's Chapel settlement, this county, ran away and threw Mr. Whitehead from the wagon, breaking one of his legs and otherwise severely injuring him.

March 20, 1914 Arkadelphia - Will Daniels, 48 years old, died at his home at Brown Springs, 12 miles east of here, yesterday. He was a farmer of that section.

March 20, 1914 Paragould - Mrs. Mary A. Breckenridge, 79 years old, died here this morning after a brief illness with pneumonia. She came to this county in 1852 from Kentucky. She is survived by seven sons and daughters including,

G.T. Breckenridge and S. Breckenridge of this city.

March 20, 1914 Little Rock - The body of Elisha D. Briggs, 45 years old, who died at a local hospital at 12 o'clock Wednesday, was sent to Harrison yesterday morning for burial.

March 20, 1914 Little Rock - Emily Mills, infant daughter of Mr. and Mrs. J.E. Mills, 912 North street, died at the family residence at 5:30 o'clock yesterday afternoon. The funeral arrangements will be announced later.

March 20, 1914 Little Rock - The funeral of Mrs. Bernice Allen Bilheimer, 26 years old, who died at the family residence, 1317 Chester street, at 4:10 o'clock Tuesday afternoon, was held from the residence at 10 o'clock yesterday morning conducted by the Rev. Sam Campbell of the Second Baptist Church. Burial was in Oakland Cemetery.



Princeton, Dallas County, Arkansas

Submitted by Ed Sanders, 10
Choctaw Dr., Searcy, AR 72143

The Arkansas state legislature planned Dallas County in 1844 by taking from Clark County all of its territory east of the Ouachita River and adding to that a part of Bradley County. The official establishment date for Dallas County is 01 January 1845. The line between Clark and Dallas counties was redrawn 03 April 1869.

The first town in Dallas County, Arkansas, was established 01 Jan. 1845 and named Dallaston. In November of that year the name was changed to Princeton. The forty acres described as the southeast quarter of the northwest quarter of Section 34, Township 8 South, Range 15 West of Dallas County, Arkansas, was purchased from the United States at a cost of \$50 and was divided into 64 lots. A plat of the town was filed 26 Oct 1846, and the town was incorporated 04 Mar 1849. The first post office in the county was established at Princeton 06 Oct 1846. There is no clear record of the origin of the name, though there are 27 Princetons in the United States. The most famous of these is easily the one in New Jersey where the university by the same name is located. It is thought likely that the name was first used to honor William, Prince of Orange, who was a hero to many immigrants to this new nation whose ancestors had been persecuted in Britain or in Europe. The first house at Princeton was that of Esquire A. Ramsey, who had come from South Carolina in 1842 when the area was still a

wilderness. He was the only carpenter in the county at the time. Princeton sits at the crossing of roads from Little Rock to Camden and from Pine Bluff to Arkadelphia. The road from Princeton to Pine Bluff was called Princeton Pike.

The first courthouse was a log cabin costing \$340.99 in 1846. The second was built in 1842 and was an imposing two-story frame building which cost \$6,000 and was demolished in the 1940s after falling into disrepair.

Generals John S. Marmaduke and J. O. Shelby wintered their Confederate troops at Princeton in 1863-1864. In the spring, the Federal General, Frederick Steele, was headquartered at Camden and attempted to bring a train of 200 wagons of corn from Washington, Arkansas (the Civil War state capital) to Camden. At Poison Spring on 18 April 1864, the train, escorted by 1,170 men; was attacked by Confederate soldiers under Generals Marmaduke and Samuel B Maxey. The engagement turned into a rout, with 301 Federal casualties against 114 for the Confederates. Steele was pursued by Price's Cavalry but retreated through Princeton toward Little Rock, even camping just outside Princeton. After continuing the retreat, the Federals were caught again at Mark's Mill near New Edinburgh in Cleveland (then Dorsey) County. Again, heavy casualties were suffered by the Union troops, but they escaped toward the Saline River. General James F. Fagan's troops, who were guarding the river crossing at Jenkins' Ferry were themselves foraging for food when the Union troops arrived. This circumstance prevented a great deal more damage to Steele's troops. Most of the Federals were able to get away across the river before the

Confederates could be rallied. Still, a hot engagement was fought at the ferry, with heavy cost to both sides. Two hundred Federals were killed and 955 wounded. The Confederates lost 300 killed and 300 wounded.

A monument near Jenkins' Ferry reads:

ERECTED IN MEMORY OF THE
SOLDIERS OF THE CONFEDERACY
WHO GAVE THEIR LIVES FOR THE
CAUSE AT THE BATTLE OF JENKINS
FERRY, APRIL 30, 1864. DEDICATED
SEPTEMBER 9, 1928, BY THE JAMES
F. FAGAN AND JENKINS FERRY
CHAPTERS OF THE UNITED
DAUGHTERS OF THE CONFEDERACY.
WE HONOR THEIR VALOR AND
SACRIFICE.

Princeton became a hospital town for the wounded of Jenkin's Ferry, and many graves of its cemetery were filled with the dead of both sides. The deaths were so numerous and rapid and the circumstances so desperate that most graves were not marked and it is not possible to locate the graves of many individuals today. One whose grave is marked is:

Harris, Edwin Eugene
Chief Surgeon of
Clark's Brigade
May 30, 1828-September 10, 1864

A weekly newspaper, the *Princetonian*, began to be published at Princeton in 1894. After the turn of the century, it was combined with the *Tri-County Advocate* at Fordyce.

The Cotton Belt Railway built a line through Fordyce in 1882, bringing rapid growth to Fordyce and a request from many of the county's citizens that the county seat be relocated there. In 1908, Fordyce

became the county seat of Dallas County and Princeton declined so that it is a mere village today (1988).

Historic Markers

BATTLE OF MARKS' MILLS MARKERS

Cleveland County, Arkansas
Intersection of Hwys 8 & 57

The principal marker near the site of the battle of Mark's Mills, part of the Camden Expedition, which was, in turn, part of the Red River Campaign of 1864, is a large pink/tan granite stone memorializing the Banks family and particularly the soldiers in the family from the Civil War through World War II. Two faces of the stone are inscribed.

There are two small fiberglass plaques erected at the site by several cooperating historical agencies. All of the markers are recorded here as transcribed by the submitter on 13 November 2000.

The site is 11 miles SE of Fordyce on Arkansas State Hwy 8, six miles SE of Kingsland on Arkansas State Hwy 57 and 2 miles northwest of New Edinburgh on Arkansas State Hwy 8.

Obverse side:

“ERECTED TO THE MEMORY OF
CAPT. RICHARD TUNSTALL BANKS
SERVING UNDER GEN JAMES
FAGAN
AT THE BATTLE OF MARKS MILL
BY HIS SON
A. BURTON BANKS
HIS GRANDSONS
1st LT LAWRENCE BANKS
141st MACHINE GUN BN. 39th DIV.
WORLD WAR I

MAJOR RICHARD HOLMES BANKS
ARMY AIR FORCES, WORLD WAR II
ROBERT THEODORE BANKS

HIS GREAT GRAND SONS
GEORGE BANKS COLLINS
RICHARD LAWRENCE COLLINS
CAPTAIN RICHARD TUNSTALL
BANKS ENGAGED IN
BATTLES OF WILSONS CREEK,
SHILOH, CORINTH, VICKSBURG,
MARKS' MILL, JENKINS' FERRY"

Reverse side:

"THE BATTLE OF MARKS' MILL
FOUGHT HERE ON APRIL 25 1864
GENERAL JAMES A. FAGAN'S
DIVISION OF CONFEDERATE
CAVALRY SURPRISED AND
CAPTURED A UNION SUPPLY
TRAIN OF 2000 MEN AND 240
WAGON LOADS OF SUPPLIES
GENERAL POWELL CLAYTON
UNION COMMANDER NARROWLY
ESCAPED CAPTURE BY FLIGHT
WITH SMALL DETACHMENT"

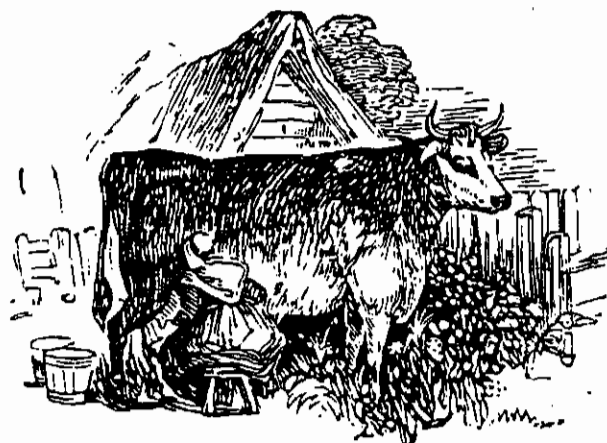
[Transcriber's Note]

This marker, erected by a local family, speaks consistently of "Mark's Mill," singular, while the *Official Records of the War of the Rebellion*, 130 vol.s, consistently states the place as "Marks' Mills." The distinction could be determined if we knew how many mills the MARKS family had at this place. It was a grist mill certainly, but others, such as a sawmill, cotton gin, etc., may have been here as well. Ed Sanders, Harding University, Searcy AR 72143, the transcriber on 13 November 2000, once [1949-1957] worked alongside Hastings MARKS, a direct descendant of the owner of this mill site. Alas, this descendant was deceased before the transcriber's

curiosity was aroused. Thus, a wonderful opportunity to discover the number and kinds of mills at the site passed unheralded! Perhaps tax or license records of Dallas, Bradley, Dorsey [name changed to Cleveland in 1885] or Cleveland counties can still [2000 A.D.] reveal this information.

Coming Event

Ancestor Swap Meet 2001 is to be held 7 April, 2001 at the Senior Activity Center in Gadsden, AL. Contact Southeast Alabama Genealogical Society, Inc., PO Box 8268, Gadsden, AL 35902 for registration information.



Blackford Bible Record

Submitted by Lynda Suffridge,
3801 Caraway Ct., North Little Rock,
AR 72116. These records were found
in the Wm. Woodruff papers at the
Arkansas History Commission and
State Archives.

Family record of Sarah Videtta
Stotts and Manverse Blackford [sic]
was married Jan 24th 1897

Sarah Videtta Stotts was borned
Feb. 26th 1882
Manverse Blackford was borned Nov
28th 1878

Sarah Frances Blackford was
borned Dec 14 1897

Javernia? Hellen Blackford was
borned April 30 1901

Harry Clarence Blackford was
borned Nov 24 1906

Mava Louise Blackford was borned
Jan 10 1914

William Thompson Blackford was
borned January 2nd 1858

Thomas Jefferson Blackford was
borned Nov 21st 1869

Emily Anjaline Blackford was
borned Dec. 5th 1861

Jackson Hencow? Blackford was
borned January the 5th 1864

Carson Blackford was borned May
the 4th 1866

Rozella Blackford was borned Sep
the 20th 1868

John Andrew Blackford was borned
the 12th? 1871?

A. J. Blackford was borned Feb 20th
1835

Frances (Horn?) Blackford was
borned May 13th 1840?

A. J. Blackford and Frances Horn?
Married Feb 20 1857

Carson Blackford (lined through)
Harry Blackford was borned
January 23rd? 1874

Amanda Caroline was born March
21st 1876?

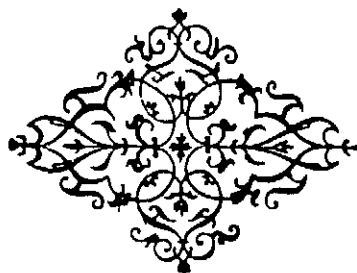
Manverse Blackford was born Nov
28th 1878

? _____ Mahaley Blackford was born
July ??? 1880

Margrett? Blackford died December
the 12th 1868? Aged 18? years 4?
months and 15 days??

James H. Blackford died Sept ???
186??

Thomas Jefferson Blackford
deceased Friday at 8 o'clock a.m.??
18th day of Sept 1874 aged 14 years,
9 months and ___ days.



Center Hill Cemetery

White County, Arkansas

An inventory of this cemetery was sent to AGS some years ago. The cover page of the listing shows: "Dedicated to William Clifton "Spud" Welch, long time Secretary-Treasurer of the Center Hill Cemetery Association."

The cemetery is located in Section 32, Township 8 North, Range 8 West, across the road from the Center Hill Missionary Baptist Church. To reach the cemetery, turn right on a gravel road 50 yards past the Center Hill city limit sign and go approximately one-half mile.

This cemetery was established on 03 March 1860 when Tomas E. Ellis donated three acres of land for a Union Church and community cemetery. At least fifteen burials had occurred in the area prior to this date. The Union Church was later disbanded and the care of the cemetery fell to a few interested residents of the area. As burials increased, these residents formed a

Alford, Infant No dates

Alford, J. A.

Alford, Sarah F.

Alford, T. B. (Veteran WWI)

Arnold, Robert L.

Ashley, Thelton J

Ayers, Agnes Britz

Baker, Cynthia

Baker, James T.

Baker, John L.

Baldwin, Rufus K.

Barnett, Emeline

Barnett, John

Barnett, Zimiri H.

Cedar Hill Cemetery Association to raise funds and control and maintain the cemetery. The 1991-1992 Board of Officers for the Association consisted of:

King Glass, President
James Brinkley, Member
Ralph Brumlov, Member
Glen Butler, Member
Dale Forrest, Member
Jack Gray, Member
Wanda Wilson, Treasurer

Addresses for more information on this cemetery and ordering copies of the inventory were:

Wanda Wilson
4067 Hwy. 36 W
Searcy, AR 72143

Or

Jack K. Gray
4801 Randolph Rd.
North Little Rock, AR 72116

The inventory was presented in alphabetical order:

| | |
|-------------|-------------|
| 28 Feb 1884 | 04 Mar 1884 |
| 16 Sep 1854 | 30 May 1885 |
| 28 Nov 1878 | 17 Feb 1879 |
| 25 Jun 1896 | 13 Nov 1984 |
| 29 Jan 1907 | 28 Feb 1980 |
| 21 Jun 1918 | 23 Sep 1986 |
| 05 Jan 1823 | 18 Dec 1876 |
| 10 Feb 1854 | 01 Aug 1884 |
| 18 Jul 1818 | 01 Jul 1862 |
| 02 Feb 1838 | 18 Jun 1855 |
| 09 Sep 1815 | 14 May 1886 |
| 20 Nov 1882 | 04 Jan 1889 |
| 20 Dec 1810 | 30 Aug 1889 |

| | | |
|------------------------|-------------|-------------|
| Bedwell, Eula S. | 17 Sep 1908 | 12 Mar 1986 |
| Bedwell, Ruben D. | 11 Sep 1908 | |
| Bloodworth, Annie | 10 Apr 1879 | 09 Feb 1957 |
| Bloodworth, Daryl W. | 25 Jan 1930 | 04 Jul 1976 |
| Bloodworth, J. Fred | 26 Aug 1913 | 21 Aug 1986 |
| Bloodworth, Loreta L. | 28 Oct 1934 | |
| Bloodworth, Odie | 23 Feb 1911 | |
| Bloodworth, Opal L. | 30 May 1907 | 02 Nov 1975 |
| Bloodworth, Thomas H. | 07 Jul 1871 | 27 May 1947 |
| Bloodworth, Wayne C. | 20 Sep 1907 | |
| Bogart, Ellie | 11 Feb 1878 | 04 Sep 1951 |
| Bogart, W. F. | 11 Jan 1875 | 18 Apr 1952 |
| Bolton, Dalia Beatrice | 22 Jul 1848 | 20 Jul 1936 |
| Bolton, David Edwin | 03 Oct 1907 | 01 Feb 1930 |
| Bolton, Effie Pearl | 22 Feb 1881 | 08 Jan 1975 |
| Bolton, James Demarcus | 14 Dec 1875 | 28 Sep 1941 |
| Bolton, H. D. | 1866 | 1887 |
| Bolton, H. H. | 17 May 1835 | 12 Aug 1893 |
| Bolton, Martha F. | 13 Jan 1846 | 29 Dec 1929 |
| Bolton, Thomas L. | 23 Nov 1871 | 01 Dec 1872 |
| Bowman, Ida F. | 02 Mar 1879 | 27 Oct 1950 |
| Bowman, Iva F. | 14 Sep 1896 | 23 Jun 1900 |
| Bowman, Porter W. | 16 Oct 1874 | 10 Jul 1939 |
| Bradley, A. A. | 19 Nov 1858 | 06 Jun 1931 |
| Brandon, Sallie Gay | 08 May 1880 | 09 Apr 1937 |
| Brandon, William F. P. | 21 Jun 1878 | 16 Nov 1953 |
| Branscom, Boyd O. | 13 Dec 1902 | 17 Apr 1973 |
| Branscom, Hardy | 1930 | 1942 |
| Branscom, Lillian | 12 Jan 1908 | 14 Jun 1986 |
| Branscom, Martha | 1928 | 1930 |
| Bridges, Thomas J. | 21 Feb 1835 | 22 Feb 1904 |
| Brinkley, Ethel O'dell | 22 Nov 1927 | 25 Aug 1984 |
| Britz, Mary Myrtle | 14 Jan 1889 | 26 Dec 1972 |
| Brumlow, Allie C. | 16 Jul 1865 | 29 Aug 1926 |
| Brumlow, Alma | 03 Jan 1868 | 20 Nov 1933 |
| Brumlow, Carthal | 17 Sep 1903 | 22 May 1955 |
| Brumlow, Claude | 01 May 1886 | 04 Jul 1958 |
| Brumlow, Eunice | 24 May 1888 | 13 Nov 1945 |
| Brumlow, Herman S. | 19 Oct 1899 | 21 Dec 1949 |
| Brumlow, J. N. | 26 Nov 1859 | 27 Mar 1929 |
| Brumlow, Jewell | 27 Sep 1900 | 10 May 1982 |
| Brumlow, T. J. | 18 Nov 1862 | 15 Mar 1919 |
| Brumlow, Walter H. | 02 Oct 1925 | 22 Sep 1944 |
| Burch, Catherine Webb | 30 Mar 1863 | 30 May 1943 |
| Burkhart, Beulah S. | 09 Jan 1881 | 04 Oct 1909 |
| Burkhart, Clanch S. | 25 Apr 1891 | 02 Jul 1938 |
| Burkhart, Dahlia | 13 Dec 1906 | 20 Jul 1909 |
| Burkhart, E. S. | 13 Nov 1874 | 18 Jan 1910 |
| Burkhart, Essie E. | 12 Apr 1889 | 20 Aug 1975 |
| Burkhart, Elbert | 12 Dec 1892 | 14 Aug 1898 |

| | | |
|--------------------------------------|-------------|-------------|
| Burkhart, Fines A. | 04 Jul 1886 | 24 Dec 1960 |
| Burkhart, Gerald P. | 16 May 1929 | 26 Oct 1933 |
| Burkhart, Johnnie D. | 10 Mar 1881 | 22 Feb 1892 |
| Burkhart, Loyd A. | 01 Jan 1914 | 05 Feb 1961 |
| Burkhart, Maggie | 08 Jul 1897 | 31 Jul 1897 |
| Burkhart, Mary Frances | 26 Apr 1857 | 08 Dec 1918 |
| Burkhart, Mildred L. | 03 Dec 1911 | 6 Oct 1913 |
| Burkhart, Nora | 23 Dec 1882 | 25 Nov 1968 |
| Burkhart, Otie E. | 22 Feb 1891 | 22 Feb 1892 |
| Burkhart, Robert P. | 23 Feb 1883 | 18 Dec 1916 |
| Burkhart, Rufus G. | 1876 | 1910 |
| Burkhart, Thomas L. | 20 Mar 1889 | 10 Jan 1910 |
| Burkhart, Tinnie O. | 09 May 1908 | 15 Oct 1909 |
| Burkhart twins | 07 Jan 1914 | 07 Jan 1914 |
| Burkhart, Vera Clyster | 09 Sep 1899 | 30 Aug 1909 |
| Burkhart, Wally F. | 20 Aug 1903 | 08 Dec 1956 |
| Burkhart, William E. | 19 Oct 1856 | 01 Jan 1910 |
| Burkhart, Will H. | 26 Sep 1878 | 15 Jun 1928 |
| Burkhart, William H. | 21 Oct 1924 | 19 Nov 1944 |
| Burkhart, William R. | 16 Feb 1905 | 31 May 1907 |
| Burnette, Anna | 22 Nov 1883 | 01 Jun 1888 |
| Butler, Carthal | 22 Nov 1905 | 27 Apr 1931 |
| Butler, Jim W. | 08 Mar 1860 | 27 Aug 1948 |
| Butler, Joanna M. | 19 Jan 1869 | 21 Jan 1940 |
| Butler, Joe L. | 1895 | 1975 |
| Butler, Leonard | 07 Nov 1881 | 08 Jan 1940 |
| Butler, Lucy V. | 1895 | 1975 |
| Butler, Minnie | 13 Sep 1889 | 25 Nov 1966 |
| Butler, Rosalie | 15 Jun 1920 | |
| Butler, Troy Glen | 22 Aug 1940 | 01 Aug 1950 |
| Butler, Walter Curtis | 22 May 1903 | 23 Apr 1981 |
| Calhoun, Nellie Jean | 28 Dec 1928 | 26 Mar 1936 |
| Calhoun, Nina Lee | 10 Sep 1895 | 27 Sep 1977 |
| Calhoun, William P. | 15 Mar 1891 | 24 Jan 1965 |
| Carmichael, Charles W. (Vietnam War) | 17 Nov 1946 | 18 Apr 1972 |
| Carmichael, Charles Wm. | 05 Feb 1885 | 07 Apr 1971 |
| Carmichael, Lillie K. | 28 Jun 1902 | 10 Jun 1989 |
| Cato, Cecil Foye | 03 Jan 1910 | 05 Mar 1987 |
| Cato, Leonard C. | 15 Dec 1905 | 05 Jun 1988 |
| Christy, O. J. | 06 Sep 1878 | 15 Mar 1970 |
| Coffey, Brewer E. | 08 Apr 1911 | 12 Jul 1982 |
| Coffey, Gladys B. | 28 Jan 1909 | |
| Cole, John H. | 1899 | 1957 |
| Cole, Ozella | 18 Aug 1892 | 25 Jan 1980 |
| Cole, Roy K. "Pete" | 15 Sep 1932 | 07 May 1989 |
| Cole, Will L. | 28 Jun 1883 | 17 Sep 1954 |
| Collins, Earnest A. (Veteran WWI) | 1894 | 1979 |
| Collins, Louella Cora | 16 Apr 1870 | 02 Jul 1909 |
| Collins, Robert Glen | 04 Mar 1906 | 09 Jul 1931 |

| | | |
|------------------------|--------------|-------------|
| Collins, Robert Lee | 08 Jun 1868 | 25 Dec 1925 |
| Corder, Infant | 1920 | 1920 |
| Critz, Minerva | 24 Jun 1825 | 31 Mar 1860 |
| Crockett, Erney | 19 Apr 1896 | 12 Aug 1896 |
| Cullefer, Henry H. | 14 Jan 1831 | 08 Jan 1900 |
| Cullefer, Mary Frances | 31 Mar 1837 | 28 Jun 1897 |
| Cullefer, Willie | 28 Jul 1866 | 19 Oct 1876 |
| Davis, Jettie Cross | 07 Nov 1900 | 07 Jun 1961 |
| Davis, Robert H. | 04 Apr 1889 | 14 Aug 1962 |
| Deen, Mattie Sowell | 24 Oct 1896 | 23 Nov 1972 |
| Deer, Mable Harrison | 28 Jul 1898 | 28 Mar 1926 |
| Dickson, C. Opal | 17 Jul 1915 | |
| Dickson, H. | 19 Dec 1908 | 08 Jan 1972 |
| Dickson, Jessie E. | 02 Jul 1910 | 21 Feb 1986 |
| Dickson, Raymond A. | 13 Feb 1905 | |
| Duffel, Estell W. | 13 Mar 1918 | 17 Jan 1968 |
| Duffel, Robert | 18 Oct 1918 | 30 Apr ? |
| Duffel, William | 1864 | 1941 |
| Duffel, Zora | 1866 | ? |
| Durham, Carl F. | 23 Jun 1908 | 22 Nov 1976 |
| Durham, Mable | 20 Mar 1916 | 06 Jul 1967 |
| Edwards, Eliza Jane | 26 Sep 1826 | 26 Aug 1889 |
| Edwards, Henry B. | 24 Mar 1874 | 13 Oct 1890 |
| Edwards, James | 1813 | 13 Mar 1911 |
| English, Florence M. | 10 May 1895 | |
| English, George | 15 Mar 1886 | 31 Oct 1955 |
| English, Julia L. | 28 Oct 1878 | |
| English, Oscar O. | 27 Sep 1898 | 25 Aug 1981 |
| English, Tonie H. | 02 Oct 1910 | 08 Jun 1965 |
| Fitch, David N. | 1850 | 25 Mar 1907 |
| Fitch, Susan | 22 Jan 1948? | 20 Jul 1936 |
| Forest, Ollie Hubert | 25 Nov 1907 | 05 Jan 1941 |
| Fugate, Richard N. | 1865 | 1919 |
| Gabe, Ralph T. | 14 Feb 1911 | |
| Gabe, Mildred L. | 27 Aug 1911 | |
| Garrard, C. P. | 1866 | 1955 |
| Garrard, Charlie P. | 15 Oct 1886 | 30 Oct 1955 |
| Garrard, Minnie P. | 01 Jan 1889 | 15 Feb 1964 |
| Garrison, Annie E. | 30 Jan 1889 | 24 Oct 1966 |
| Garrison, Rodman C. | 21 Dec 1881 | 03 Jan 1968 |
| Gay, Binnie | 16 Sep 1891 | 02 Oct 1968 |
| Gay, Carthal E. | 05 Dec 1910 | 8 May 1975 |
| Gay, Odean C. | 18 Dec 1913 | |
| Gay, Thomas M. | 05 Mar 1881 | 05 Feb 1961 |
| Ghent, Herlon | 15 Feb 1911 | 16 Sep 1930 |
| Ghent, Matt M. | 12 Dec 1882 | 23 Apr 1965 |

| | | |
|---------------------------------|-------------|-------------|
| Ghent, Molly M. | 29 Aug 883 | 09 Jun 1954 |
| Gilles, Frank Leroy | 29 Dec 1901 | 10 Mar 980 |
| Gilles, James M. | 10 Feb 1890 | 20 May 1970 |
| Gilles, Lillie May | 22 Jul 1909 | |
| Gilles, Mary E. | 22 Jun 1894 | 12 May 1974 |
| Gilliam, C. P. | 24 Jan 1863 | 13 Nov 1934 |
| Gilliam, Ida | 1868 | 1941 |
| Gipson, Hettie L. | 09 Dec 1899 | 28 Oct 1977 |
| Glass, Emmet V. | 1878 | 1954 |
| Glass, Emmet V., Jr. | 1931 | 1941 |
| Glasss, Lucile I. | 1883 | 1964 |
| Glass, Thomas P. (Veteran WWII) | 1920 | 1944 |
| Glisson, Eunice S. | 21 Sep 1916 | |
| Glisson, Isham D. | 11 Jan 1901 | 25 Mar 1972 |
| Grammer, Jennie Beatrice | 1876 | 03 Jul 1879 |
| Grammer, Jimmie Dote | 19 Aug 1874 | 26 Dec 1874 |
| Grammer, William | 30 Aug 1855 | 27 Oct 1861 |
| Gray, William Roy | 10 Oct 1880 | 19 Apr 1970 |
| Gray, Willie Jo | 23 Sep 1882 | 03 Sep 1931 |
| Greer, J. D. | 31 Jan 1841 | 28 Jan 1893 |
| Greer, Lee R. | 16 Nov 1890 | 12 May 1971 |
| Greer, Margaret | 09 Sep 1842 | 08 Aug 1896 |
| Greer, Nettie C. | 24 Apr 1893 | 02 Apr 1979 |
| Griffith, Malinda | 21 Mar 18? | 27 Feb 19 ? |
| Gwinn, Helen M. | 12 Apr 1932 | |
| Gwinn, James R. | 12 May 1932 | 27 Mar 1982 |
| Gwinn, John D. | 27 Apr 1898 | 03 Sep 1971 |
| Gwinn, Leatha B. | 05 Dec 1906 | 03 Aug 1962 |
| Haile, Susan H. | 30 Mar 1884 | |
| Hall, Bernice | 11 Oct 1903 | 22 Dec 1907 |
| Hall, Hazel | 30 Nov 1908 | 21 Dec 1910 |
| Hall, Lillie | 16 Feb 1882 | 15 Oct 1966 |
| Hall, Monroe | 05 Feb 1872 | 11 Dec 1930 |
| Ham, Opal | 1915 | 1989 |
| Harrison, Albert A. | 07 Nov 1874 | 26 Sep 1875 |
| Harrison, Alton | 1905 | 1933 |
| Harrison, Annie H. | 24 Jan 1888 | 05 Sep 1972 |
| Harrison, baby | no dates | |
| Harrison, Basil | 07 May 1912 | 23 May 1924 |
| Harrison, D. B. | 17 Oct 1879 | 08 Oct 1962 |
| Harrison, Edd H. | 15 Oct 1876 | 07 Jul 1955 |
| Harrison, Eunice May | 28 Mar 1852 | 28 Jun 1938 |
| Harrison, Fannie Sue | 30 May 1907 | |
| Harrison, Garland Q. | 31 Mar 1908 | 36 Apr 1908 |
| Harrison, Gracie L. | 17 Feb 1902 | 24 Oct 1918 |
| Harrison, Henry Milum | 1870 | 1948 |
| Harrison, James | 1878 | 1958 |
| Harrison, Jessie Griffin | 22 Jan 1852 | 03 May 1931 |
| Harrison, John E. | 03 Jul 1950 | 31 May 1953 |

| | | |
|-------------------------------------|-------------|-------------|
| Harrison, Joseph C. | 21 Jul 1868 | 01 Sep 1943 |
| Harrison, Julia | 1881 | 1969 |
| Harrison, Kiddie Sue | 16 Oct 1867 | 28 May 1931 |
| Harrison, Linda M. | 28 Nov 1953 | 24 Feb 1958 |
| Harrison, Linnie | 02 Oct 1879 | 26 Oct 1927 |
| Harrison, Mable K. | 14 Aug 1907 | |
| Harrison, Mary Jane | 12 May 1871 | 23 Sep 1939 |
| Harrison, Vera Nola | 15 Oct 1904 | |
| Harrison, Viva J. | 11 Jun 1913 | 08 Jul 1918 |
| Harrison, Walter Edward | 28 Jan 1906 | 30 Mar 1990 |
| Harrison, Willis Ivy | 04 Feb 1904 | 19 Jan 1991 |
| Hart, Sarah A. | 15 May 1841 | 19 Jan 1888 |
| Hart, Thomas (Veteran CW/CSA) | 1835 | 1865 |
| Hart, V. J. | 1838 | 1880 |
| Hite, Ester | no dates | |
| Hite, Emmette | 17 Jan 1909 | 17 Jul 1980 |
| Hite, Effie E. | 06 Sep 1908 | |
| Hooks, Homer Virgil | 02 Jan 1883 | 20 Jul 1888 |
| Hooks, Sona | 12 Jun 1857 | 06 Oct 1906 |
| Hopper, Madison R. (Veteran CW/CSA) | no dates | |
| Hughey, Grady S. | 07 Sep 1892 | 13 Jan 1962 |
| Huston, Charles Marin | 21 Dec 1903 | 18 Mar 1944 |
| Huston, Daniel | 26 Oct 1845 | 06 Jun 1928 |
| Huston, Maud B. | 1880 | 1943 |
| Huston, L. I. | 1878 | 1956 |
| Huston, Raphael | 10 Nov 1929 | |
| Irwin, Annie King | 19 Apr 1856 | 22 Feb 1915 |
| Irwin, Ben Block | 08 Oct 1885 | 04 Sep 1922 |
| Irwin, Charlie | 03 Aug 1892 | 10 Sep 1892 |
| Irwin, Elizabeth Webb | 04 Mar 1827 | 27 Apr 1912 |
| Irwin, Eloise | 10 Sep 1893 | 1920 |
| Irwin, Green W. | 23 Sep 1855 | 28 May 1856 |
| Irwin, James G. | 19 Dec 1853 | 09 Apr 1878 |
| Irwin, John | 10 Nov 1882 | 04 Jun 1889 |
| Irwin, John F. | 07 Mar 1851 | 21 Oct 1898 |
| Irwin, Leonidas | 23 Oct 1816 | 9 Aug 1864 |
| Irwin, Leroy Steele | 07 Mar ? | 21 Sep 1947 |
| Irwin, Otho King | 22 Feb 1888 | 22 Sep 1907 |
| Irwin, Thomas P. | 14 Apr 1828 | 18 Aug 1902 |
| Jones, Ella C. | 24 Aug 1879 | 03 Jun 1947 |
| Jones, Roy | 1910 | 1931 |
| Jones, William | 20 Mar 1867 | 03 Oct 1938 |
| Killebrew, M. | No dates | |
| Kirby, Lillie | 07 Dec 1892 | 12 Sep 1893 |
| Kirby, infant son | 29 Jan 1911 | 29 Jan 1911 |
| Kurck, George C. | 31 May 1924 | 09 Nov 1989 |
| Kurck, Joyce M. | 97 Sep 1929 | |

| | | |
|---|-------------|-------------|
| Kurck, infant | 09 Dec 1963 | 09 Dec 1963 |
| Lamb, J. H. | 13 Nov 1879 | 30 Sep 1902 |
| Lanier, Chester B. | 1882 | 1959 |
| Latimer, Lela Davis | 17 Oct 1877 | 19 Jun 1939 |
| Lewis, Mary J. | 27 Oct 1838 | 05 Sep 1913 |
| Lewis, G. W. | 30 Dec 1822 | 04 Jan 1900 |
| Linder, Raymond James | 31 Aug 1911 | 13 Jun 1977 |
| Maddock, Alta R. | 03 Jun 1898 | 27 Jan 1982 |
| Maddock, Alvin L. | 1868 | 1928 |
| Maddock, Lura | 1870 | 1918 |
| Maddock, Millard G. | 10 Oct 1899 | 18 May 1970 |
| McKinney, Charles R. | 08 Jul 1938 | 29 Jul 1946 |
| McKinney, G. W. | 09 Jan 1849 | 12 Feb 1933 |
| McKinney, Lonie M. | 28 Oct 1905 | 16 Oct 1989 |
| McKinney, Marvin | 22 Mar 1884 | 05 Sep 1975 |
| McKinney, Nanxy?/Nancy? E. | 15 Oct 1854 | 16 Dec 1932 |
| McKinney, Ray | 07 Feb 1910 | 07 Sep 1977 |
| McKinney, Theodore C. | 10 Jun 1894 | 03 Sep 1963 |
| McKinney, Veola | 06 Oct 1914 | 10 Nov 1989 |
| McKinney, William A. (Veteran WWI) | 10 Jun 1894 | 22 Aug 1968 |
| McKinney, William J. | 17 Nov 1934 | |
| Morgan, Billie Jo | 04 Apr 1928 | 02 Apr 1932 |
| Morgan, James H. | 25 Dec 1832 | 30 Mar 1863 |
| Morgan, James H. | 19 Jun 1895 | 11 Mar 1896 |
| Morgan, James Henry | 06 Nov 1863 | 07 Aug 1935 |
| Morgan, Leonard O. | 02 May 1893 | 08 Aug 1900 |
| Morgan, Martha J. | 21 Nov 1860 | 01 Sep 1876 |
| Morgan, Mary Elizabeth | 28 Nov 1871 | 23 Dec 1950 |
| Morgan, Mary F. | 30 Oct 1838 | 07 Mar 1881 |
| Morgan, Minnie K. | 05 Feb 1887 | 12 Dec 1887 |
| Morgan, Mollie M. | 04 Jun 1864 | 10 Aug 1896 |
| Morgan, Mollie Rowena | 27 Jul 1911 | 13 Sep 1911 |
| Mullens, Alta | No dates | |
| Mullens, Bettie | 05 Dec 1857 | 15 Jun 1935 |
| Mullens, Carrie M. | 1878 | 1966 |
| Mullens, Durrell (son-Victoria & George) | No dates | |
| Mullens, George | 1858 | 1891 |
| Mullens, Henry D. | 08 Feb 1853 | 08 Nov 1937 |
| Mullens, James | 1875 | 1920 |
| Mullens, Lena B. | 04 Feb 1884 | 28 Dec 1977 |
| Mullens, Thomas E. | 27 Aug 1880 | 15 Jan 1971 |
| Mullens, Victoria | 1858 | 1939 |
| Muse, Joseph B. | 06 Jul 1825 | 0 Aug 1878 |
| Neal, D. J. | 16 Jul 1856 | 02 Apr 1875 |
| Neal, Gladys Marie | 02 Jan 1911 | 18 May 1912 |
| Neal, James R. | 01 Dec 1840 | 05 Jan 1892 |

| | | |
|-------------------------------------|-------------|-------------|
| Neal, John W. | 1870 | 1939 |
| Neal, John W. | 24 Aug 1836 | 09 Aug 1862 |
| Neal, Laura G. | 1878 | 1955 |
| Neal, Lucy A. | 05 Aug 1869 | 01 Feb 1881 |
| Neal, M. H. | 22 Nov 1861 | 18 May 1883 |
| Neal, Mary A. | 01 Apr 1814 | 14 Feb 1887 |
| Neal, Mary J. | 06 Sep 1843 | 11 Jul 1894 |
| Neal, Susan H. | 01 Aug 1854 | 10 Aug 1855 |
| Neal, Verna May | 07 Sep 1903 | 13 Apr 1915 |
| Neal, W. D. | 12 Aug 1809 | 13 Sep 1869 |
| Neal, infant W. D. & M. A. | 08 Aug 1858 | 08 Aug 1858 |
| Nokes, Burnie B. | 18 May 1908 | 16 May 1940 |
| Nokes, Callie S. | 17 Oct 1888 | 28 Feb 1960 |
| Nokes, Charles D. | 15 May 1885 | 15 Jun 1959 |
| Nokes, Lillie M. | 06 Mar 1907 | 29 Sep 1974 |
| Norton, Martin Holley (Veteran WWI) | 1894 | 1976 |
| Norton, William F. | 16 Jul 1920 | 26 Nov 1952 |
| Norton, William F., Jr. | 01 Aug 1950 | 06 Aug 1952 |
| Nugent, Pattie | 15 Jun 1956 | 28 Feb 1982 |
| | | |
| Parker, John (Veteran CW/CSA) | 1830 | 1965 |
| Parker, Margaret Parks | 1834 | 1965 |
| Parks, Elsie Battist | 25 Mar 1871 | 26 Mar 1911 |
| Parks, John B. | 06 Sep 1827 | 1909 |
| Parks, Mattie A. | 18 Sep 1847 | 13 Jan 1917 |
| Parks, William A. (Veteran CW/CSA) | 25 Feb 1840 | 09 Jan 1928 |
| Parks, S. C. Sallie | 11 May 1849 | 28 Jan 1927 |
| Perry, Serene E. | 30 Jul 1851 | 18 Jul 1937 |
| Perry, William M. | 15 Aug 1845 | 23 Nov 1922 |
| Pettus, Demarcus (Veteran CW/CSA) | 1843 | 1864 |
| Pettus, D. W. | 17 Dec 1806 | 04 Feb 1881 |
| Pettus, John A. | 13 Dec 1875 | 28 Mar 1936 |
| Pettus, Mary Lela | 27 Mar 1876 | 07 Oct 1965 |
| Pettus, Rector | 22 Nov 1907 | 10 Jun 1971 |
| Pettus, Sarah | 22 Sep 1806 | 09 Jun 1889 |
| Petty, Annie E. | 19 Mar 1804 | 25 Feb 1861 |
| Poe, Mamer | No dates | |
| Powell, Margaret Baxter | 1833 | 1914 |
| Price, Ella | 19 May 1876 | 27 Dec 1909 |
| Price, Howard Thomas | 09 Sep 1931 | 02 Aug 1936 |
| Price, Riley | 28 Jan 1898 | 25 Mar 1910 |
| Price, Tom | 13 Jan 1872 | 10 Mar 1920 |
| | | |
| Ray, Sam | 22 May 1824 | 06 May 1900 |
| Ray, Sarah T. | 07 Mar 1840 | 23 Jun 1928 |
| Redus, John C. | 23 Dec 1849 | 02 Sep 1855 |
| Redus, J. S. | 18 Jun 1819 | 23 Oct 1858 |
| Redus, Mary H. | 13 Sep 1846 | 03 May 1913 |
| Redus, W. G. | 06 Nov 1842 | 14 Apr 1897 |
| Reeves, May | 1893 | 1940 |

| | | |
|--------------------------|-------------|-------------|
| Richmont, Cynthia Denise | 1980 | 1981 |
| Riley, Luther Q. | 06 May 1878 | 10 May 1956 |
| Ruhl, Sylvia | 28 Apr 1928 | 07 Feb 1988 |
| Rye, Loney | 14 May 1878 | 13 Jul 1923 |
| Scholes, Elizabeth | 23 Mar 1837 | 26 May 1913 |
| Scholes, Georgiana | 02 Dec 1861 | 24 Feb 1897 |
| Scholes, Henry L., Dr. | 25 Aug 1857 | 23 Jan 1887 |
| Simpson, Avaneil Butler | 11 Jun 1919 | 19 Jan 1972 |
| Simpson, Lonnie | 15 Jun 1918 | 07 Mar 1975 |
| Skillern, James W. | 09 Jul 1862 | 25 Jun 1899 |
| Skillern, John | 20 Jul 1856 | 28 Jan 1914 |
| Skillern, Mildred | 1865 | 1921 |
| Sloan, Aura Gray | 24 Feb 1908 | 25 Dec 1984 |
| Smith, Belle H. | 22 Jul 1854 | 10 Apr 1893 |
| Smith, Della D. | 05 Nov 1879 | 20 Jul 1885 |
| Smith, Earlie | 04 Jan 1895 | 04 Jan 1895 |
| Smith, Earnest A. | 9 Jan 1888 | 03 May 1889 |
| Smith, Edward D. | 25 Nov 1875 | 24 Aug 1891 |
| Smith, Edward G. | 08 Feb 1885 | 10 Oct 1886 |
| Smith, Mrs. E. F. | 08 May 1821 | 11 Mar 1899 |
| Smith, E. Fletch | 22 Jan 1851 | 22 Aug 1896 |
| Smith, George S. | 15 Apr 1878 | 17 Jan 1880 |
| Smith, J. C. Olean | 15 Sep 1889 | 09 Oct 1896 |
| Smith, John E. | 04 Jan 1895 | 24 Jan 1897 |
| Smith, J. W. | ? | 31 Jul 1894 |
| Smith, Laura A. | 15 Mar 1878 | 03 Jan 1886 |
| Smith, Lillie O. | 31 Jan 1885 | 24 Aug 1891 |
| Smith, Lula O. | 07 Dec 1873 | 23 Aug 1891 |
| Sowell, B. F. | 1857 | 1937 |
| Sowell, B. Florence | 22 Feb 1893 | 18 Feb 1963 |
| Sowell, Denne W. | 13 Feb 1897 | 09 Mar 1974 |
| Sowell, H. A. | 1857 | 1940 |
| Sowell, H. F. | 01 Sep 1892 | 09 Oct 1892 |
| Sowell, Ida E. | 1874 | 1952 |
| Sowell, J. E. | 17 Nov 1889 | 21 Mar 1927 |
| Sowell, J. W. "Hub" | 18 May 1885 | 23 Oct 1962 |
| Sowell, Lulah May | 09 May 1887 | 23 Jun 1897 |
| Sowell, M. E. | 19 Jun 1883 | 24 Jul 1899 |
| Sowell, R. E. | 24 Feb 1894 | 22 Dec 1896 |
| Sowell, Samuel B. | 22 Oct 1834 | 17 Nov 1909 |
| Steward, Frankie | 15 Sep 1924 | 07 Dec 1929 |
| Stracener, Dealie A. | 22 Dec 1881 | 09 Sep 1973 |
| Stracener, J. Frank | 11 Dec 1871 | 05 Jan 1947 |
| Stracener, Ollie Dell | 06 Jan 1891 | 22 Sep 1961 |
| Stracener, William M. | 18 Sep 1886 | ? |
| Sullivan, baby | No dates | |
| Sullivan, B.F. | 1866 | 1958 |
| Sullivan, Lillie H. | 27 Jun 1891 | 06 Feb 1920 |
| Sullivan, Rowena | 1870 | 1929 |

| | | |
|---|-------------|-------------|
| Sullivan, infant | 1907 | 1907 |
| Sullivan, infant | 1912 | 1912 |
| Turner, Clyde M. | 02 Dec 1912 | |
| Turner, Velma | 16 Feb 1911 | 01 Apr 1978 |
| Vess, Ausie Clifton | 10 Oct 1916 | 09 Jan 1982 |
| Vess, Charles W. | 25 Apr 1877 | 21 Mar 1956 |
| Vess, Susie E. | 23 Mar 1883 | 13 Mar 1962 |
| Walker, Artie Lee | 14 Feb 1865 | 04 Oct 1946 |
| Walker, C. F. | 08 Apr 1888 | 13 Sep 1922 |
| Walker, Ellen Flowise | 27 Dec 1921 | 09 Jul 1922 |
| Walker, Emma J. | 03 Jan 1872 | 17 Feb 1873 |
| Walker, H. C. | 15 Feb 1893 | 02 Oct 1916 |
| Walker, John M. | 18 Sep 1824 | 03 Mar 1878 |
| Walker, Rachel D. | 25 Jul 1833 | 05 May 1887 |
| Walker, Z. M. | 27 Aug 1854 | 22 Mar 1919 |
| Wash, Annie Eliza | 04 May 1847 | 21 Nov 1915 |
| Watson, Essie M. | 07 Dec 1884 | 12 Jan 1911 |
| Watson, Luiza | 14 Apr 1815 | 15 Apr 1874 |
| Watson, Martha J. | 09 Jan 1859 | 22 Apr 1875 |
| Watson, Sammie | 15 Jan 1877 | 23 Feb 1880 |
| Weaks, Addie | 1870 | 1941 |
| Weaks, John F. | 1858 | 1910 |
| Webb, Grace Hidges | 04 Aug 1888 | 04 Jan 1919 |
| Webb, John M. | 12 Nov 1839 | 26 Jan 1925 |
| Webb, John Raymond | 14 Apr 1908 | 26 Aug 1934 |
| Webb, Sarah C. | 12 Feb 1840 | 10 Jan 1920 |
| Webb, William C. | 18 Mar 1867 | 02 Sep 1889 |
| Welch, Erma O. | 01 May 1905 | 08 Feb 1974 |
| Welch, Joseph Franklin (Veteran CW/CSA Memorial) | 1830 | 13 Jan 1863 |
| Welch, Laura A. | 1867 | 1961 |
| Welch, William C. | 11 Oct 1901 | 30 Mar 1990 |
| Welch, William H. | 1859 | 1938 |
| West, Annie F. | 22 Jun 1900 | 26 Jan 1978 |
| West, Jeff William | 193? | 1990 |
| West, William B. | 08 Apr 1890 | 28 Sep 1976 |
| White, Eve N. | 24 Aug 1910 | |
| White, G. L. | 24 Jan 1848 | 15 Feb 1906 |
| White, George L. II | 10 Mar 1899 | 26 Nov 1988 |
| White, Mary M. | 10 Jan 1858 | 29 Oct 1908 |
| White, Veola M. | 16 Oct 1904 | 04 Feb 1985 |
| Wiggs, Edral B. | 10 Oct 1915 | 22 Nov 1989 |
| Wiggs, Francis M | 1849 | 1929 |
| Wiggs, Harvey T. Mortis | 30 May 1897 | 24 Aug 1963 |
| Williams, Herbert | 27 Sep 1904 | 31 Aug 1966 |
| Williams, Myrtle | 12 Aug 1905 | |
| Wilson, L. V. | 01 Jun 1937 | 11 Oct 1990 |

| | | |
|-----------------------|-------------|-------------|
| Wilson, Wanda Jean | 12 Dec 1932 | |
| Wood, Ernest Floyd | 11 May 1916 | 03 Jun 1970 |
| Wood, Mrs. Ruby Myres | No dates | |
| Woodson, Maude Irene | 1886 | 1926 |
| Woodson, Otho C. | 1881 | 1950 |
| Woosley, Norma Jean | 03 Aug 1928 | 13 Oct 1954 |
| Wortham, Lillie A. | 23 Feb 1895 | 30 Sep 1983 |
| Wortham, Lyde E. | 1881 | 1925 |
| Wortham, Etta L. | 1916 | 1927 |
| Wright, Edith V. | 15 May 1911 | 20 Aug 1990 |
| Wright, Gradie W. | 04 Jan 1909 | 23 Feb 1976 |
| Wyatt, Margaret C. | 14 Feb 1865 | 15 Nov 1905 |

| | | |
|---|--------------|-------------|
| Yancy, James M., Jr. (Veteran CW/CSA 1822 | | 1864 |
| Yearby, Bessie | 1891 | 1938 |
| Yearby, Clementine | 18 Oct 1884 | 30 Jul 1964 |
| Yearby, son | 26 Jul 1915 | 26 Jul 1915 |
| Yearby, son | 29 Dec 1912 | 29 Dec 1912 |
| Yearby, son | 13 Dec 1910 | 13 Dec 1910 |
| Yearby, George W. | 228 Mar 1886 | 26 Jan 1957 |
| Yearby, John F. E. | 07 Jul 1885 | 22 Feb 1900 |
| Yearby, infant | 27 Mar 1894 | 27 Mar 1894 |
| Yearby, John T | 11 Apr 1845 | 29 Jan 1919 |
| Yearby, Margaret | 22 May 1852 | 14 Feb 1945 |
| Yearby, Oris E. | 1891 | 1931 |
| Yearby, Otho W. | 17 Aug 1879 | 12 Jan 1922 |
| Yearby, R. N. | 30 May 1886 | 09 Aug 1902 |

Unidentified Graves

Recent burial - funeral home marker missing

| | | |
|--------------------------|-------------|-------------|
| No name - stone broken - | 22 Dec 1837 | 07 Aug 1870 |
|--------------------------|-------------|-------------|

Many depressions and sand stones indicate burial sites in all areas of the cemetery. Tradition states several slaves buried in north end of cemetery.

Know to be Buried in Cemetery

Individuals known to be buried in the cemetery without head stones

| | | |
|---------------------|-------------|-------------|
| Parks, Statira Jane | 10 Dec 1800 | 22 Nov 1875 |
| Parks, Luther Brown | 27 Feb 1869 | 20 Sep 1872 |
| Parks, Mary Jane | 23 Oct 1873 | 15 Jun 1887 |
| Parks, John A. | 08 Nov 1875 | 30 Jul 1880 |
| Parks, Nora B. | 04 Jul 1877 | 07 Aug 1880 |
| Parks, David D. | 07 Dec 1880 | 12 Sep 1885 |
| Welch, James M. | 05 Nov 1854 | 05 May 1870 |
| Welch, Martha E. | 05 Aug 1856 | 29 Sep 1857 |
| Welch, Emma Frances | 29 Mar 1862 | 05 Aug 1869 |
| Welch, Katie Ruth | 1898 | 20 Jul 1899 |

Abstracts from the *Huntington Hummer*

No. 13, August 9, 1888, Huntington,
Sebastian County, Arkansas

Abstracted by Jan Eddleman, 1807
Sunshine Mine Rd., Hackett, AR
72937

These abstracts are from a copy of
the *Huntington Hummer* found in an
antique shop in Huntington. The
paper has been sent to the Arkansas
History commission.

Page one consists of advertisements,
a rather lengthy editorial saying that
the paper was going out of business
due to the failure of subscribers and
advertisers to pay their bills, and
political statements favoring the
Democratic Party. The following is a
list of names given on this page.

Advertisement for J. W. Young,
dealer in "staple and fancy
groceries, drugs, chemicals,
hardware, queensware, boots, shoes
etc." on Broadway in Huntington.

Advertisement for H. G. Boesser,
watchmaker and jeweler, 407
Garrison Ave., Fort Smith,
Arkansas.

Advertisement for B. A. Uptmoor,
manufacturer and dealer, cigars,
Garrison Avenue, Fort Smith.

Advertisement for Boyd & Barnes,
insurance agents.

Advertisement for L.W. Heard
(Successor to C.P. Jones), wholesale
liquor dealer, corner of Fifth street
and Garrison, Fort Smith.

Advertisement for M.A. Cross, agent
of Ferd. Heim Brewing Co., 14 North
Ninth Street, Fort Smith.

Advertisement for J. H. Gill,
furniture dealer, Garrison Ave., Fort
Smith.

Advertisement for J. J. Little & Co.,
fine clothing, 713 Garrison Avenue,
Fort Smith.

Subscription information listing
Chas. Knoble as publisher.

State Democratic Ticket: For
Governor, John P. Eagle of Lonoke;
for Secretary of State, Ben B. Chism
of Logan; For Attorney General, W.
E. Atkinson of Clarke; for Treasurer,
W.E. Woodruff, Jr. of England; for
Chief Justice, S. R. Cockrill, Jr., of
Pulaski; for Auditor, W. S. Dunlop of
Monroe; for Land Commissioner, P.
M. Cobbs of St. Francis; for
Superintendent of Public
Instruction, Wood E. Thompson of
Drew.

Sebastian County Democratic
Ticket: for Representative, J. A.
Williams and J. F. Weaver; for
County Judge, W. F. Blythe; for
Circuit Clerk, A. A. McDonald; for
County Clerk, Jesse A. Bell; for
Sheriff, John F. Williams; for
Assessor, W. L. Euper; for
Treasurer, J. P. Durden; for
Surveyor, T. H. . Johnson; for
Coroner, James M. Kelleam.

Frisco Time Table listing W. S.
Rountree as agent.

Postoffice hours listing Geo. S. Mahaney as postmaster.

Advertisement for Jas. M. Macklemerry? running for prosecuting attorney for the Twelfth Judicial District.

A speech made by "chairman" Forrester to the Democrats of Sebastian County.

Page Two of the paper consists of a column of local news entitled "Local Lingo", most of which is copied here in its entirety.

John Degen for fresh meats.

Feed your teams at R. A. Bonham's

Barrett's mules are 10 ½ hands high.

John Degen keeps the best bologna.

L. P. Barrett has a span of fine mules for sale.

The Hummer is offered for sale cheap for cash.

Come to the big democratic barbeque on the 17th.

Mrs. Jas. Donaldson is visiting at Mt. Vernon, Ill.

Beef, mutton, veal, sausage, etc. at John Degen's.

What key unlocks the door to misery? Whis-key.

Barrett's mules are young and fine. A bargain to the buyer.

Miss Henrietta Marks is visiting friends in Hackett City.

Go to R. A. Bonham's livery stable for all kinds of feed stuffs.

Ice meats at John Degen's, corner Broadway and Commercial.

See Barrett about those mules. You will never do better in a trade.

Feed stuff in quantities to suit purchasers; at Bonham's livery stable.

The beef bought at Broadway Meat Market is always kept on ice.

Enquire of the Huntington Brick Company for first-class building brick.

Milk and lemonade shake at the Palace Drug Store. Call and see it work.

A turn of new corn was ground at the grist mill of R. L. West Co. Saturday.

The juiciest steaks whittled out of the fattest beeves can be found at John Degen's.

Smoke the Palace cigar, found at the Palace Drug Store, the best cigar in town.

Mr. J. S. McKaney has just returned from the interior, talking and working for Huntington.

The sanitary condition of the town is some better, but there is still room for improvement.

Little Oliver, son of Vinton Goff, is slowly recovering from his long spell of sickness.

The El Dorado, the best ten cent smoker in the southwest, at McConnell & Brewster's.

The freshest meats are to be found at the Broadway Meat Market, John Degen, proprietor.

Mrs. Wilhaf, of Van Buren, is visiting the family of her son, Mr. C. H. Wilhaf, of this place.

For your drugs, chemicals, paints, dyes, proprietary medicines, etc., go to McConnell & Bonham.

The Fellows Hotel is the leading house in Huntington. Rates, \$2 per day. Special rates to day boarders.

Mr. and Mrs. James Day returned to Fort Smith Sunday after a brief visit to relatives and friends in this place.

Frank Phelps—handsome Frankie—left us last week to make a short visit to Kansas. He took his wedding garb with him.

Klein & Find, 701 Garrison Ave., Fort Smith, are headquarters for fine watches and jewelry. Repairing a specialty.

At the meeting of the council Tuesday, John Davis received the appointment of town marshal, vice Vinton Goff resigned.

The agreement for the cotton yards has been sealed, signed and delivered by both the coal company and the Farmers' Alliance.

R. L. West & Co. have received the contract to build the M. E. Church, South. They expect to have it completed by October 1st.

And would you have it said that your local paper, the brightest and best in the county, died of insufficient nourishment?

Messrs. J. F. Graves and W. E. Pearson and Misses Ella Graves and Ray Davis of Witcherville, paid Huntington a visit Sunday afternoon.

Mrs. W. H. Cole and Mrs. J. H. Clendening of Fort Smith were down from that town on a brief visit last week; guests of Mrs. W. H. Owens.

Miss Lula Christopher, one of the reigning belles of the lovely town of Hackett, arrived Saturday and during her stay will remain the guest of Miss Viola Reeves.

Wilson Walker and Al Belt accompanied the candidates from Hackett City Monday and saw that they kept straight while they remained in the queen of black diamonds. Sweet elder was the

only draught they would permit the boys to use.

Mr. J. W. Riley, mention of whom was made some weeks ago, has arrived with his stock of drugs and will occupy the new store house of Mr. Weaver as soon as it is completed.

Genial Joe Johnson, radiant as ever with the smiles of contentment and prosperity, paid the old folks a home visit last week, passing through town on his return to Fort Smith Friday.

Mr. J. R. Jackson, a mere shadow of his former self, ventured out Monday and visit the HUMMER sanctum. Jack's friends are glad to see him out even in a dilapidated condition, for they had begun to believe they were going to lose him entirely.

A very successful religious meeting is going on at the Brewster's chapel near this city, conducted by Rev. I. F. Harris of the M.E. Church, South, who is assisted by Rev. J. M. C. Hamilton. The meeting will continue throughout the week and possibly longer.

The editorial sanctum has invaded Monday by Miss Viola Reeves and her pretty guest, Miss Lula Christopher, of Hackett City, whose cheery presence dispelled the gloom peculiar to a country print-shop during their stay. Of course, we would always have them call again.

Mr. M. J. Redmond, formerly assistant book keeper of the K & T Coal Co. at this place, has returned from his vacation to his Canada home, and now holds down a position with the same company in Hackett City. Mr. Redmond has many warm friends in Huntington who regret his transfer.

Miss Viola Reeves gave a pleasant euchre party to a number of her friends Monday evening. It is unnecessary to add that the occasion was one of merriment and much enjoyment. Miss Viola understands the art of

entertaining and does so to the complete satisfaction of her many admiring friends.

Capt. Sam Fellows, as treasurer of the school board, has received notice that Huntington's apportionment of the public school funds amounts to \$4.88 cents. Had it been raised 12 cts. better we might have been about to run school the remainder of the summer and during the approaching winter. This extra allowance will likely be asked for.

We are sorry for the bad luck that befell our young friend Herman Schuster later Sunday afternoon. The case is a sad one, but is not without parallel. The wife and mother is bearing up well under the affliction and will in time be restored to her wonted health. The babe lived but two hours and will shortly be taken to Fort Smith for reinterment.

J. A. Williams and J. Frank Weaver, democratic candidates for legislative honors, were the only ones among the horde who had the courage to pull the latch string of the HUMMER Monday; they found us as blue as the d--l and in prime condition to collapse and offered their warmest sympathies, which were cold comfort at best. They made a good impression with our people and will undoubtedly go to the legislature in the same boat.

Col. Wise A. Cooper, the silver-tongued expounder of democracy as taught by Jefferson and practiced by lesser lights, paid the city of black diamonds a visit last week on legal business. The colonel has signified his willingness and intention to be with us upon the occasion of our big barbecue on the 17th inst. and has in course of preparation a thunderbolt in the shape of irrefutable arguments which he proposes to submit for the benefit of his republican friends on that day.

The trial of Geo. Mahaney, charged with embezzlement, came off before Mayor Young Thursday and resulted in acquittal. It seems that the suit was

brought by C. G. & W. S. Townsley of Fort Smith who had sold Mahaney goods. Mahaney in time sold his stock of wares when plaintiffs made affidavit that the goods were entrusted to the defendant to be sold on commission. Defendant produced bills and letters to the contrary and the result was an easy victory for him. The Townsleys were represented by N. L. Marmon, Esq., of Fort Smith, and Mr. Mahaney by W. D. Meluturf, Esq., of Booneville.

Our colored friends have had their barbeque, and quite a success it was. Amusements peculiar to such occasions were to be seen on every hand, and they made the most of the opportunity to turn the day into one of unadulterated enjoyment. Many whites collected about the grounds to witness and to participate at the feast. The meats were nicely barbecued and found the gathered assemblage in prime condition to munch. They set to with a zest that smacked of hunger and appeared to enjoy the feast spread before them. The success of the day was due to the untiring efforts of Marshall Penny and Bon Smith, who never wearied in making it pleasant for all.

Our eloquent, distinguished, and cultured friends, Clendening and Miller, the one a lawyer and the other a millionaire newspaper man from the booming Border City, paid our town a visit last Saturday upon the occasion of the colored barbecue here, and while Clen did the talking Miller did the button-holing with the murky population for barbecued meat and votes. It is said that while he filled up on the former he went hungry for the latter. We feel sorry for our journalistic friend, and would wish him all possible success, but so long as he affiliates with the colonel he can never hope to do anything with even the niggers in Arkansas. The colonel made a good impression whenever his No. 11's struck terra firma, but beyond that deponent knoweth not, neither does he say.

At a meeting of the business committee of the Eagle Democratic Club of this city last Mnday evening ... (several resolutions passed about the upcoming barbecue). The committee is composed of Drs. McConnell and Brewster, S.T. McMaster, Jno. T. Davis, Joe Martin.

Scavenger Work. I want every body to know that I am now prepared to clean vaults. Charges reasonable. JAKE TALAMENE.

Fort Smith Times. Mr. R. P. Claibourne, one of the republican nominees for representative, said on the stump at Mansfield that he wanted it distinctly understood that he was a prohibitionist first, last and all the time with the accent on the "all." This is the same man who several years ago said that the children of the old rebel soldiers ought to be disenfranchised, also, because their fathers had eaten sour grapes and that set their teeth on edge.

FOR SALE—Thirty head of blooded cattle of the Jersey and Durham breed. Will sell in quantity to suit purchasers. They are graded half, six and seven-eighths and full blood, registered. Write or call on JOHN DEGEN, Huntington, Ark.

Ordinance passed banning any kind of pool or billiard tables in Huntington on August 7, 1888. Signed by Mayor J. W. Young and R.A. Bonham, Clerk.

The rest of the page is filled with advertisements as follows:

F. W. Tillay & Co., agents of the Huntington Land Co., 509 Broadway, Huntington.

A. L. Brewster, physician and surgeon, Huntington, Ark.

James B. Long, carpenter and joiner, Huntington, Ark.

R. A. Bonham, notary public, Huntington, Ark.

Dr. J. W. McConnell, physician and surgeon, Huntington, Ark.

Oliver Goff, contractor and builder in stone masonry, Huntington, Ark.

R. G. Ferguson, contractor and builder, Huntington, Ark.

L. C. Finley, house and sign painter, paper hanger, and caleomimer, Huntington, Ark.

A.C. Brewster, attorney at law and dealer in real estate, Huntington, Ark.

Dr. A. W. Callicoatte, physician and surgeon, Huntington, Ark.

Ben F. Smith, proprietor of The Star Barber Shop, Huntington, Ark.

Anton Scherier, watchmaker and jeweler, Huntington, Ark.

W. H. Howard & Co., painters, sign writers, paper hangers, Huntington, Ark.

Stuart A. Miller, house and sign painters, ornamental work and gilding, graining, staining, hand oil finishing, glazing, paper hanging, caleomining, roof painting.

COMMISSIONER'S SALE—Notice is hereby given that by virtue of a decree made and (illegible [filed for]) record in the Sebastian Circuit Court for the Greenwood district at the June term of the said court, we will on the 15th day of August, 1888, in front of the postoffice in Huntington, Arkansas, between the hours of 10 o'clock a.m. and 3 o'clock p.m., sell at auction the coal underlying tract or parcel of land devised by John M. Smoot and his daughter, Sarah L. Brown, described in his will as "all of his land lying south of Cherokee Creek in Sebastian County and west of S. Randel's, the coal bank excepted; the land so devised being the n. e. ¼ of the s. w. ¼ of section 26, township 5, north, range 21 west, and about 5 acres in the same section in the s.e. 1/4 of the

n.w.1/4." Commissioners: W. D. Hunter, G.T. Terrell, Jesse Martin.

Drummers' Hotel, Proprietor: J.N. Lockett, Huntington

Huntington Livery and Feed Stables, Proprietor: R. A. Bonham

J. T. George & Co., dealers in groceries and country produce

"You're off base, young man, if you think Al. Best don't keep the best whiskey in Hackett City. He buys his best whiskey from the largest distilleries and can sell as cheap as any man in Arkansas. The jug trade supplied."

The Palace Drug Store, proprietors: Dr. J. W. McConnell and Dr. A. L. Brewster

J. Renfroe, dealer in confectionary, cigars, tobacco and all kinds of cool drinks. Huntington. A lunch stand is run in connection for the accommodation of the public, where the best of lunches are always served.

R. L. West & Co., millers and lumber dealers

The Fellows Hotel, Proprietor: Sam'l Fellows

The third page of the paper is filled with a poem, a serialized novel, quotes from out-of-state papers, and national advertisements. The last page of the paper contains the national and international news and amusing stories from areas other than Arkansas.

Newspaper Notices

Submitted by Jann Woodard, 12008 Ginger Lane, Benton, AR 72015

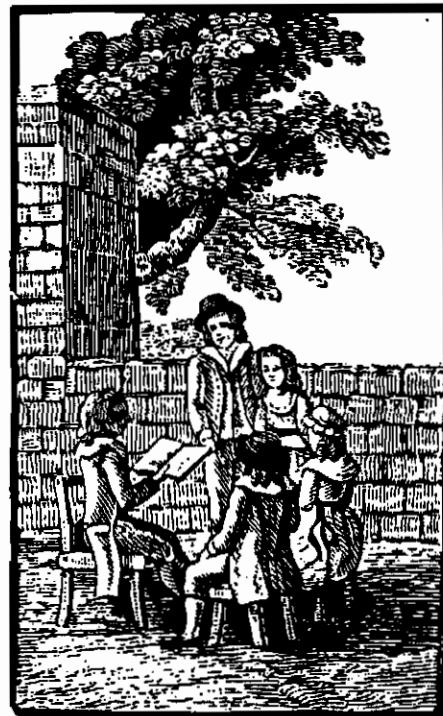
Arkansas Gazette, 10 November 1904

Conway, Nov. 9 - Mrs. Bennetta Harshaw of Hamlet died Sunday night after five days' illness. She was the

widow of Rev. J. E. Harshaw, who died two weeks ago. Mrs. Harshaw was a daughter of Mrs. M. B. Edmonson of Argenta and formerly lived in Little Rock. The funeral took place Tuesday at noon at New Liberty cemetery, eight miles east of Conway.

Arkansas Gazette, 5 March 1916

Little Rock: Dorothy Inez, six months old, daughter of Mr. and Mrs. J. G. Hawkins, died at the family residence, 2523 Chester street, shortly before 7 o'clock Saturday morning. Funeral services will be conducted from the family home at 2 o'clock Monday afternoon by the Rev. F. D. Byars, pastor of the First Baptist Church, Argenta. Burial will be in Oakland cemetery.



Arkansas Queries

General guidelines for submitting queries:

Queries are limited to members only
Please submit no more than one query per calendar year

Keep the query to approximately fifty words

Neatness counts! If possible, type, double spaced. Otherwise, print legibly leaving a space between each line.

Capitalize surnames

Remember the 4 W's"

Who - Give complete names of interest

What - What do you want? Keep it short and to the point

Where - Locality in ARKANSAS

When - Give a time period

Since we always work with a large backlog of queries, we strive to print them in the order in which they were received. It may be several months, however, before your query appears. We do use all queries received in a calendar year by the end of that year. We continue to receive queries with no name and address included. If the query gets separated from the envelope, we cannot use it. It simplifies the work of the all-volunteer staff of this publication if you send your query with your membership fee to Arkansas Genealogical Society, P. O. Box 908, Hot Springs, AR 71902-0908.

Quinn Seek info on John T. Quin and wife Senora Ines Berry, m. 9 Sept 1869; in Sebastian Co. 1897; believe they went to Oregon 1885.
Anita B. Harris, 1859 Ward Rd., DeFniak Springs, FL 32433-0847;

Briggs Need info on Hughs Briggs, b. 1820-1860, m. Myra Wilmeth, b. Boone Co. ?; may have lived Boone/Carroll Co. **Neal Noble, 49 Winsome Way, Newark, DE 19702**

Carter Searching for info on Sion B. Carter of Gap Twp., Montgomery Co., and later Scott Co., AR. 1860 census shows S. B. (Sion) b. NC, c1821, and wife Barthane, b. TN c1823. Descendants William, James and Benjamin all b. TN, Sarah, John and Robert b. AR. **Laurie Carter Keesaw, 26800 Hwy. 9, Boulder Creek, CA 95006**

Wooten, John R. lived Stoney Point, White Co., AR, for many years; wife Sarah E. buried Stoney Point Cemetery. Where was John buried after 1900? **Eileen Cook, 2643 Kirkridge Pk., Belleville, MI 48111**

African-American Genealogy

Interested in this and the history of El Dorado, Union Co., AR. **Rose Mary Lee, 3206 Victor Court, San Jose, CA 95132**

McCaleb, Burgess, Todd, Ince Researching Mary Jane McCaleb, b. 1861, David R. McCaleb, b. 1894, both Washington Co., AR; Adam Todd, b. 1866, Clifty, Madison Co.; John Ince, d. 1834, Lawrence Co. **Zanita Marvin, 6250 Monmouth Ave., Goleta, CA 93117**

Brown, Thomas and Jane Brown lived Jefferson Co., 1850s. Allied surnames are Henery, Brewer, Davis, Green, Crips, Flynn and Mattingly. Will exchange. **Marilyn Markow, 1701 South Mays No. J201, Round Rock, TX 7664-6734**

Ward Seek info on Daniel D. Ward, d. 1854?, Sevier Co., and his wife Mary Ann Wyatt, both b. TN. Two sons went to live with relatives after her death. **Edith Reynolds, 1520**

**NW Michelbook Lane,
McMinnville, OR 97128**

Edwards Want to find descendants of John William Edwards, b. 18 Dec 1844, Anson Co., NC, d. 2 Mar 1926, Ashley Co., AR. Wives: Sarah Jane "Sallie" Butler, Elizabeth M. "Lizzie" Donham, Iva Mae Grantham. **Mrs. Jo Ann Cooper, 606 Sequoia Dr., Jonesboro, AR 72401-6072**

Wild Seek info on this family: Edward, b. 1819, Jane, b. c1822, lived in Monroe Co. 1860. Edward was in 1st AR. Inf. Union. What became of them after the war? **Stephanie F. Shurley, 4289 Putting Green, San Antonio, TX 78217**

Hawkins, Whitson Henry E. Hawkins, called "Charlie", m. Susanna Jane Whitson, called "Sudy" 4 Aug. 1880, Conway Co., AR. Daughter Vida m. Thomas Monroe Garrison; daughter Bessie m. John Anderson Thomas. When and where did they die? **Mrs. G. C. Rose, 210 South 10th, Clinton, OK 73601-3927**

Hooton/Hooten Plan to complete my Hooton-Hooten book before 2001 ends, after 30 years of visits, photographs, etc. If you want your Hooton-Hooten ancestors to appear, let me know. **Flodelle Hooten Gates, 3607 Bella Vista Dr., Midwest City, OK 73110-3807**

Moss, Collins, etc. Seek info on parents of Moses Collins, SC, MS, Dr. Hugh N. Moss, VA, MS, AL, AR; Joseph Taylor, NC; Augustus Ahrens, Germany; John Brooks, GA, AL; Lemuel C. Morgan; Burwell Binns, Sr.; Jack Hobbs; Nancy Hobbs; Elizabeth Anthony;

Washington Phelps, Basheba Long; all of GA. **Edwin Moss, 6428 Trinity Dr., Pine Bluff, AR 71603**

Gartmann, Lites Seeking photographs of Capres Gartmann and wife Mary Portia Lites; Hezekiah Gartmann; Caleb Lites, c1860-1880; Grapevine area Grant Co. **Dan L. Cearley, 123 April Wind N., Montgomery, TX 77356; cearley@dellnet.com**

Wright Seek parents of Edward Ausburn Wright, b. 15 Dec. 1819 Troy, NC, m. Rebecca Chappell of Troy, NC, c1845. Rebecca d. 1859; he m. Sarah Anne Chappell 5 Aug 1861. In 1869 they moved to Fayette Co., TN, and on to McCrory, AR in 1871. E. A. d. 19 Jan 1906 in McCrory, age 86. **Michael Wright, 4020 Sam Peck Rd., Little Rock, AR 72212**

Pittman, Polk, Couch Seek info on these ancestors from Mississippi Co., from mid 1880s to present. Joseph and Nancy (Couch) Polk; George Harvey Polk; Daniel Robert Pittman. **Kathryn Faulkner, 2536 SE Virginia Ave., Topeka, KS 66605-1363**

McKuin Want to learn more about the McKuin family from the Conway Co. area. They were there as early as 1830-40. Will gladly share. **Ron McKuin, 2760 Barron Rd., Poplar Bluff, MO 63901**

Dedmon, Henson, Barker, Taylor Searching these family lines in AR and have several pictures I could share. **Sheila Bolton, PO Box 277, Heavener, OK 74937-0277**

Brantley Michael Joel Brantley, b. Mar 1865 LA, d. 6 Jan 1924, Lafayette Co., AR; m. Annie C. Price,

Lafayette Co., 28 Jan 1892. Need info on family 1900-1924; occupation, cause of death and where buried. **Mike Brantley, 504 Crestview, Seagoville, TX 75159**

Howard, Bridges, Frisby Want to know if Elihue Howard who m. Anna Bridges in Logan Co, KY 25 July 1797, were the parents of Bridges Howard who was b. 1804 KY; living in Catahoula Parish, LA 1830 census near Margaret Ward, 1840 Ouachita Parish, LA, in 1850 in AR. Daughter Charlotte m. Josiah Frisby 14 Aug 1848 Union Co., AR. Did Elihue serve in War of 1812? Where did he die? Josiah Frisby was grandson of Samuel Frisby and great grandson of Abraham Frisby living in Salisbury Dist., Rowan Co., NC 1790 census. Did he buy land in NC during Rev. era? Will exchange. **Corinne Stevenson, 2816 Maryland Dr., Jonesboro, AR 72401**

Confederate Units Seek info on two Arkansas Confederate units: Stirman's Regt. Sharpshooters and Williamson's Battalion Arkansas Volunteers. **Michael J. Williamson, 5472 Castlebay Dr., Springfield, MO 65809-4668**

Bishop, Patterson Seek any info on connection of Catherine Bishop, b. 22 May 1817 GA, wife of Tillman E. Patterson; she d. 6 Feb 1884 in Sevier (now Little River) Co., AR, and is buried in Oak Hill Cemetery. They were parents of James J., Sarah A., Abner C., Margaret M., Evan S. and Alexander P. Patterson. **Juanita Bitton, 1705 Mountain View Dr., McCammon, ID 83250**

Linley/Lindley Desperate for newspaper announcement of marriage of James Linley and

Florence Cockrell in Logan Co., Boonville, AR, 14 July 1899. Have marriage record; need names of family members that might be in such an announcement. **Ann Linley Kloster, 37697 Wheeler Rd., Dexter, O 97431**

Payne, Boswell Blackburn, b. 1812 Rutherford Co., TN, d. 1906 Greenway Clay Co., AR, m. Nancy Nettles 1 Mar 1836 in Dyer Co., TN; moved to Green (now Clay) Co., AR, c1843. Seek parents and any information on this line. **Darlene M. Hofer, PO Box 661, Waskom, TX 75691-0661**

Sedwick Particular interest in Arkansas is the Sedwick line who lived in Fayetteville, AR. **Cori Sedwick Downing, 368 Vitoria Ave., Winter Park, FL 32789;** email: coridowning@ctinet.net

Thompson William Thompson, d. AR 24 Jul 1927, where? Where buried? Newspaper articles? **Patricia K. Gill, 10109 51st Ave., College Park, MD 20740-1119**

Coal Mine Explosion Seek info on this event near Jenny Lind [Sebastian Co.], AR, and info on Charles Lasha, b. 18 Oct 1889 TX, d. 15 Dec 1916, AR. **Deb Seversen, 403 Northwest 5th, Pocahontas, IA 50574**

Marshall Looking for info on family of James K. Marshall, b. c1821 TN, came to Marion/Searcy Co. area c1836; had 12 children by three wives: Hardy H.; William; Alexander; Elizabeth; Rebecca; Jane/Jennie; Joel; Henry; Stephen; George W.; Tennessee and Margaret. **Kathryn L. Garcia, 5111 Tiffany Circle, Killeen, TX 76549**

Sailor Seek info on the daughters of Jonathan Sailor and Lucinda Elliot from Clark Co., MO, who went to AR, Pulaski Co.: Delia A. Sailor m. George W. King; Nancy Anna (Annie) Sailor m. William R. Vaughan; Mary Isabelle Sailor Hopkins Irwin Robertson, m.1) Moses Hopkins, div., m 2) John Irwin; m. 3) Stephen Robertson; Lucy J. Sailor and Elizabeth (Bettie) Sailor. Also Sailors in White Co. **Peggy Petersen, 4044 Hwy AA, Halfway, MO 65663**

Whitney, Howard, Cox, Nelson, McLelland, McNeely, Frasier, Janes, Jones, McCain, Glaze, Hulan/Hulin/Huling, Wood Researching these lines in AR, Hempstead Co. **Nan Whitney Gorton, 119 Lake Dr., West Monroe, LA 71291**; email: skoshes1@aol.com

Erwin, Guy Researching lines of Elizabeth (Guy) Erwin, b. 17 Aug 1874, d. Nov 1968, West Memphis, AR, and Samuel George Erwin b. c1870s, d. late 1920-1930s, AR, m. c1890s; may have lived near Troy, TN; Samuel Guy Erwin b. 27 Mar 1899; William Shaffer Erwin, brother of Samuel had three sisters, Vera, Pat and Mae -Mae lived in Marked Tree, AR. **Janet Erwin Willson, 1604 Kirklee R., Charleston, WV 25314**

Winchester, Russell Robertson (Bob) Winchester, b. 8 Oct 1811, Rutherford Co., TN, d. 7 Mar 1886, Sebastian Co., AR, m. Judith Russell, b. 23 Feb 1815, Rutherford Co., TN, d. 6 Nov 1895, Sebastian Co., AR. Who were his parents? **Alma L. Costello, 19488 Baker Rd., Bend, OR 97702-7930**

Spry Looking for any Spry's who may have migrated from NC area to

AR in late 1800s or early 1900s. Any info will help. **Della M. Rice, 2209 3rd Ave North, Texas City, TX 77590-7215**

Johnson Seek info on Lula Johnson, daughter of Albert Johnson, b. 1872, Yell Co., AR, d. 24 Sept 1954, m. George W. Pool; also Martha A. Johnson, b. Feb 1870, m. John Anderson Crabb. **Joan Johnson, 1411 CF 406, Frector, AR 72461-9144**

Sparrow, Cagto, Johnson, Ward, Haralson, Parker, Hollinshead, Dillard, Davidson, Taylor, Rison, Clifton, Adamson, Lewis, S. Phillips, T. B. Hanley, Dunn. First 8 were in Pulaski, Faulkner, White, Searcy Cos., 1840-1900; others in Marion, Perry, Pulaski, Phillips and Independence Cos. 1800-1900. Most from TN, NC, VA, IN and MD. **Mrs. Jane Sparrow Wiley, PO Box 242, Heber Springs, AR 72543-0242**

Atkins Would like to hear from anyone researching this family. Wm. H. Atkins m. c1840, first wife Malinda? , second wife Narcissa ? Need maiden names. Was in Ouachita and Hempstead Cos., went to TX. **Marjorie Young, 1633 Dorothy Dr., Grand Prairie, TX 75051-2816**

Book Reviews and Notices

Russell P. Baker, Susan Gardner Boyle, Jan Eddleman, Lynda Suffridge

Notices: The following books are offered by the University of Arkansas Press, 201 Ozark, Fayetteville, AR 72701 (800-626-0090) and may be ordered from them.

The Old Frontier *Cotton Plantations and the Formation of Arkansas Society 1819-1861*, Donald P. McNeilly; Fayetteville: The University of Arkansas Press, 288 pages, 32 illustrations, November 2000; \$34.95 cloth.

In this deeply researched and well-written study, Donald P. McNeilly examines how moderately wealthy planters and sons of planters immigrated into the virtually empty lands of Arkansas seeking their fortune and to establish themselves as the leaders of a new planter aristocracy west of the Mississippi River. These men, sometimes alone sometimes with family, and usually with slaves, sought the best land possible, cleared it, planted their crops and erected crude houses and other buildings. Life was difficult for these would-be leaders of society and their families, and especially hard for the slaves who toiled to create fields in which they labored to produce a crop.

McNeilly argues that by the time of Arkansas statehood in 1836, planters and large farmers had secured a hold over their frontier home and that between 1840 and the Civil War, planters solidified

their hold on politics, economics and society in Arkansas. The author takes a topical approach to the subject, with chapters on migration, slavery, non-planter whites, politics, and the secession crisis of 1860-61. McNeilly offers a first-rate analysis of the creation of a white, cotton-based society in Arkansas, shedding light not only on the southern frontier, but also on the established Old South before the Civil War.

[Donald P. McNeilly received his Ph. D. in history from the University of Maryland. This study, his first book, is based on his dissertation, written under the direction of Professor Ira Berlin. McNeilly is currently an instructor in the University Honors Program (English) at the University of Maryland.]

Pea Ridge and Prairie Grove by William Baxter, Introduction by William L. Shea; *The Civil War in the West Series*, Fayetteville: The University of Arkansas Press, 136 pages, March 2000, \$16.00, paper.

With the goal of sketching "at least some of the bright lights and dark shadows of the war," William Baxter authored his regional classic, *Pea Ridge and Prairie Grove, in 1864*, before the actual end of the Civil War. Primarily focusing on the civilians of the region, Baxter vividly describes their precarious and vulnerable positions during the advances and retreats of armies as Confederate and Federal forces marched across his homeland. In his account, Baxter describes skirmishes and cavalry charges outside his front door, the "firing" of

his town's buildings during a Confederate retreat, clashes between secessionist and Unionist neighbors, the feeding of hungry soldiers and the forceful appropriation of his remaining food supply, and the sickening sight of the wounded emerging from the Prairie Grove battlefield.

Since its original printing, this firsthand account has only been reprinted once, in 1957, and both editions are considered collectors' items today. Of interest to Civil War scholars and general readers alike, Baxter's compelling social history is rendered even more comprehensive by William Shea's introduction. *Pea Ridge and Prairie Grove* is a valuable personal account of the Civil War in the Trans-Mississippi West which enables us to better comprehend the conflict as a whole and its devastating effect on the general populace of the war-torn portions of the country.

[William Baxter was the president of Arkansas College and a clergyman in Fayetteville, Arkansas, when the Civil War started in 1861.

William L. Shea is a professor of history at the University of Arkansas at Monticello and co-author of *Pea Ridge: Civil War Campaign in the West* (1992 University of North Carolina Press).]

Born in the Delta: Reflections on the Making of a Southern White Sensibility by Margaret Jones Bolsterli; Fayetteville; The University of Arkansas Press; 152 pages, 11 illustrations, \$16.95.

In this gracefully written memoir, Margaret Jones Bolsterli recounts her experiences as a lively, observant girl coming of age on an

Arkansas cotton farm during the 1930s and 1940s. The Mississippi River's broad, flat floodplain provides the setting for her vivid strokes of memory and history, each portraying key elements of the "southern sensibility."

Bolsterli's themes include the southerner's strong sense of place, the penchant for stories rather than true dialog, a caste system based on formality and race, the underlying current of violence, and the repressive function of evangelical religion. She also examines manners, the patriarchal family structure, the "southern belle" concept, and the persistence of the memory of the Civil War. A fascinating chapter on food indicates how African and European customs are melded into southern cuisine to include chicken, pork, "cracklin' bread," gravy and biscuits, field peas, turnip green, butter beans, devil's food cake, and dill pickles.

First published in 1991 by the University of Tennessee Press, this edition brings Bolsterli's autobiographical account into the fold of Delta Studies collected by the University of Arkansas Press. Comparable to Shirley Abbott's *Womenfolks, Born in the Delta*, this a valuable source for those interested in southern history and culture, as well as readers who just enjoy a good story, well-told.

[Margaret Jones Bolsterli has also authored *The Early Community at Bedford Park* (1977, Ohio University Press) and edited *Vinegar Pie and Chicken Bread* (1982) and *A Remembrance of Eden* (1993) both published by the University of Arkansas Press. She is professor

emerita of English at the University of Arkansas, Fayetteville, and owns a cattle farm in Wesley, Arkansas.]

Widows by the Thousand, *The Civil War Correspondence of Theophilus and Harriet Perry, 1862-1864*, by M. Jane Johansson; Fayetteville, The University of Arkansas Press, 352 pages, 8 illustrations, October 2000, \$34.95, cloth.

This collection of letters written between Theophilus and Harriet Perry during the Civil War provides an intimate, firsthand account of the effect of the war on one young couple. Theophilus Perry was a captain with the 28th Texas Cavalry, a unit that campaigned in Arkansas and Louisiana as part of the division known as "Walkers Greyhounds." Letters from Captain Perry describe his service in a highly literate style that is unusual for Confederate accounts. He documents a number of important events, including his experiences as a detached officer in the winter of 1862-1863, the attempt to relieve the siege of Vicksburg in the summer of 1863, mutiny in his regiment, and the Red River campaign up to early April 1864, just before he was killed in the battle of Pleasant Hill. Conversely, Harriet Perry's writing allows the reader to witness the everyday life of an upper-class woman during the home front deprivations, facing the hardships and fears of childbearing and childrearing alone, and coping with other challenges resulting from her husband's absence.

The fourth volume in the Civil War in the West series, *Widows by the Thousand* elucidates aspects of the war in the western states and territories. By using U.S. census

records, service records, and other sources to identify the people mentioned in the letters, Johansson makes a significant contribution to the literature. And by placing the letters in the context of the mid-nineteenth century, she has revealed a fascinating portrait of the impact of the Civil War on one family that suffered tragedy and loss.

[M. Jane Johansson is an adjunct professor of history at Northeastern State University in Pryor, Oklahoma. She is the author of *Peculiar Honor: A History of the 28th Cavalry, 1862-1865* (1998, University of Arkansas Press), which was awarded the East Texas Historical Association's Ottis Lock Endowment award for Best Book of the Year on East Texas in 1999.]

Negro Slavery in Arkansas, *With an Introduction by Carl Moneyhon*, by Orville W. Taylor; Fayetteville: The Arkansas Press, 336 pages, 5 illustrations, September 2000; \$19.95.

Forty years after its original publication by the Duke University Press, Orville W. Taylor's *Negro Slavery in Arkansas* still stands as the only comprehensive treatment of the "peculiar institution" in the state. Long out of print and found only in rare book stores, it is now available to the contemporary audience with this new paperback edition.

When slavery was abolished by the Emancipation Proclamation there were slaves in every county of the state, and almost half the population was directly involved in slavery as either a slave, a slave owner, or a member of an owner's

family. Orville Taylor traces the growth of slavery from John Law's colony in the early eighteenth century through the French and Spanish colonial period, territorial and statehood days, to the beginning of the Civil War. He describes the various facets of the institution, including the slave trade, work and overseers, health and medical treatment, food, clothing, housing, marriage, personal morality, legal regulation and discipline, and the free black and manumission.

While drawing on published material as appropriate, the book is, to a great extent, based on original, often previously unpublished sources: diaries; plantation records; letters, family papers, church, city, county and other legal records; and newspapers. Valuable to libraries, historians in several areas of concentration, and the general reader, it gives due recognition to the significant place slavery occupied in the life and economy of antebellum Arkansas.

[Orville W. Taylor is professor of history emeritus at Georgia College & State University in Milledgeville, Georgia. Winner of the Duke University Publication Award for the original edition of this book, he also co-authored *Religion in the Southern States* (1993), Mercer University Press). He currently lives in Jacksonville, Florida.

The Wigwam and the Cabin. The Arkansas Edition, by William Gilmore Simms, Edited and with an Introduction by John Caldwell Guilds, Fayetteville; The University of Arkansas Press, 376 pages, 2 illustrations, November, 2000, \$34.95.

One of the most important volumes of short fiction published before the Civil War, *The Wigwam and the Cabin* represents William Gilmore Simms at his very best. It is the work that led Poe to say of Simms, "... in invention, in vigor, in movement, in the power of exciting interest, and in the artistical management of his themes, he has surpassed, we think, any of his countrymen."

Praised by critics on both sides of the Atlantic, *The Wigwam and the Cabin* focuses on the Southern frontier that Simms knew so well, a frontier whose vernacular, courage, humor, folklore, violence, injustice, and beauty are vividly brought to life through these strokes of his pen. "I have seen the life," Simms wrote, "—have lived it—and much of my material... is the planter, the squatter, the Indian, the Negro—the bold and hardy pioneer, the vigorous yeomen—these are the subjects."

Simms' portrayal of frontier life is the most realistic and graphic in all nineteenth-century American literature; and the Arkansas edition of *The Wigwam and the Cabin* with Dr. Guilds' fine editing and informative introduction, brings back into print an invaluable contribution to the development to the short story in America.

[John Caldwell Guilds is Distinguished Professor of Humanities at the University of Arkansas in Fayetteville. Considered the authority on the work of William Gilmore Simms, he has authored *Simms: A Literary life* (1992, University of Arkansas Press) and *William Gilmore Simms and the*

American Frontier (1997, University of Georgia Press).]

Arkansas Biography, A Collection of Notable Lives, Edited by Nancy A. Williams and Jeannie M. Whayne; Fayetteville: The University of Arkansas Press, 352 pages, 45 illustrations, March 2000, \$30.00 paper, \$50.00 cloth.

Eight years in the making, *Arkansas Biography* brings to light the lives of those who have helped shape Arkansas history for over four hundred years. Featured are not only the trailblazers, such as steamboat captain Henry Shreve, Olympic gold medallist Bill Carr, and aviator Louise Thaden, but also those whose lives reflect their cultures and times—musicians, scientists, teachers, preachers, and journalists. One hundred and eighty contributors—professional and avocational historians—offer clear vignettes of nearly three hundred individuals, beginning with Hernando DeSoto, who crossed the Mississippi River in the summer of 1540. The entries include birth and death dates and places, life and career highlights, lineage, anecdotes, and source material.

This is a browser's book with an Arkansas voice. The wealth of information condensed into this single volume will be valuable to general readers of all ages, libraries, museums and scholars. A fitting summary at the turn of a millennium, *Arkansas Biography* pays lasting tribute to the men and women who have enriched the life and character of the state and, by extension, the region and the nation.

[Nancy A. Williams is director of the Arkansas Biography Project and is currently working on the biography of Alfred Edgar Smith.

Jeannie M. Whayne is associate professor and chair of the history department at the University of Arkansas and has authored *A New Plantation South: Land, Labor and Federal Favor in Twentieth Century Arkansas* (1996, University Press of Virginia).]

Life in the Leatherwoods, New Edition, by John Quincy Wolf, Sr., edited with a new introduction by Gene Hyde and Brooks Blevins, **The Arkansas Classics Series**: Fayetteville, The University of Arkansas Press, 240 pages, 15 illustrations, June 2000, \$20.00 paper.

Life in the Leatherwoods is one of the country's most delightful childhood memoirs, penned by an Ozark native with a keen, observant eye and a gift for narrative. John Quincy Wolf's relaxed style and colorful characters resemble those of another chronicler of nineteenth century rural life, Laura Ingalls Wilder. Wolf's acerbic wit and lucid prose infuse the White River pioneers of his story with such life that the reader participates vicariously in their log rollings, house raisings, spelling bees, hog killings, soap making, country dances and camp meetings.

Originally published by Memphis State University Press in 1974, this new edition includes additional writings of John Q. Wolf and a continuation of the autobiographical narrative after his 1887 move to Batesville. Wolf's writings are valuable resources for southern

historians, folklorists, general readers and scholars of Ozarkiana because they provide a rare glimpse into the social and family life of a largely misunderstood and stereotyped people—the independent hill farmers of the Arkansas Ozarks of the 1870s and 1880s. With *Life in the Leatherwoods*, Wolf bestows a benediction upon a society that existed vibrantly and humorously in his memory—one that has now forever disappeared from the American countryside.

[Gene Hyde is director of the Regional Studies Center at Lyon College in Batesville, Arkansas.

Brooks Blevins teaches history at Mississippi State University and has authored *Cattle in the Cotton Fields: A History of Cattle Raising in Alabama* (1998, University of Alabama Press.)

Trimble Campground Church: The First 150 Years, by Trimble Campground Church (Izard County), PO Box 150, Dolph, AR 72528, 48 pages, saddlestitched. \$8.00 plus \$1.25 postage. More than a listing of events of the church since 1850, it contains personal stories of the people of the congregation with many dates and kinships.

Trimble Campground Cemetery, by Trimble Campground Church, PO Box 150, Dolph, AR 72528. This 18 page inventory of the cemetery which was part of the original site for the church, cemetery and school grounds. The listing is annotated with kinships, marriage dates, etc., making it a valuable research tool for Izard County and neighboring areas. Order from the church at \$3.00 per copy plus \$.75 postage.

Index to the Arkansas General Land Office 1820-1907, Volume Six, Covering the counties of Hempstead, Howard, Nevada and Little River by Sherida K.

Eddlemon. Published by Heritage Books, Inc., 1540 E Pointer Ridge Pl., Bowie, MD 20715; 2000. 254 pp. Softback. \$24.50 (shipping \$4.00). This book is an index of the names of people who acquired land in Hempstead, Howard, Nevada and Little River Counties through the Arkansas General Land Office between 1820-1907. Instructions are given for obtaining a copy of the certificate from the Bureau of Land Management, Eastern States Office in Springfield, VA. Researching the land records your ancestor gained through county, purchase or homestead is time well spent. It is especially beneficial to obtain the papers created by such transactions. The book would be more helpful if the author had included the land office and the certificate number necessary to order copies of the files from the National Archives and Records Administration. [LCS]

| |
|----------|
| A |
|----------|

Abbott
 Shirley, 36
 Ahrens
 Augustus, 32
 Albright
 Henry, 7
 Alford
 Infant, 14
 J. A., 14
 Sarah F., 14
 t, 14
 T. B., 14
 Anthony
 Elizabeth, 32
 Arkansas
 Argenta, 30
 Austin, 8
 Booneville, Logan
 Co., 33
 Bradley County, 10
 Clark County, 10
 Cleveland County, 11
 Clify, Madison Co.,
 31
 Dallas County, 10
 Dallaston, 10
 Drew County, 9
 El Dorado, Union
 Co., 31
 Grapevine, Grant Co.,
 32
 Green/Clay Co., 33
 Hamlet, 30
 Hempstead Co., 34
 Hot Springs, 8
 Huntington, 29
 Jefferson Co., 31
 Jefferson County, 9
 Jenny Lind, 33
 Lafayette Co., 33
 Lawrence Co., 31

Little Rock, 30
 Madison County, 8
 Marked Tree, 34
 McCrory, 32
 Monroe Co., 32
 Princeton, 10
 Pulaski Co., 34
 Randolph, 8
 Rockport, 8
 Searcy, 10
 Sevier Co., 31
 Sevier/Little River
 Co., 33
 Stoney Point, White
 County, 31
 Union Co., 33
 Washington, 10
 Washington Co., 31
 White County, 8, 14
 Arn
 Edgar, 7
 Arnold
 Robert L., 14
 Arrington
 Todd, 5
 Ashley
 Thelton J., 14
 Atkins
 Wm. H., 34
 Ayers
 Agnes Britz, 14

| |
|----------|
| B |
|----------|

Baige
 Jack, 8
 Baker
 Cynthia, 14
 James T., 14
 John T., 14
 Mrs. Bessie, 7
 Rusell P., 3
 Russell P., 8, 35
 Baldwin

Rufus K., 14
 Bandy
 Mrs. G. C., 6
 Banks
 A. Burton, 11
 Capt. Richard
 Tunstall, 11
 Lt. Lawrence, 11
 Maj. Richard Holmes,
 12
 Robert Theodore, 12
 Barnes
 E., 8
 Barnett
 Emeline, 14
 John, 14
 Zimiri H., 14
 Barrett
 J. P., 26
 Baxter
 William, 35, 36
 Bedwell
 Eula S., 15
 Ruben D., 15
 Bell
 Jesse A., 25
 Belt
 Al, 27
 Berlin
 Ira, 35
 Berry
 Senora Ines, 31
 Bilheimer
 Bernice Allen, 9
 Binns
 Burwell, Sr., 32
 Bird
 Miss Rena, 7
 Bishop
 Catherine, 33
 Bitton
 Juanita, 33
 Blackford
 ___Mahaley, 13

A. J., 13
 Carson, 13
 Emily Anjaline, 13
 Frances, 13
 Frances (Horn?, 13
 Frances (Horn?), 13
 Harry, 13
 Harry Clarence, 13
 Jackson Hencow?, 13
 James H., 13
 John Andrew, 13
 Jsavernia Hellen, 13
 Manverse, 13
 Margrett, 13
 Mava Louise, 13
 Rozella, 13
 Sarah Frances, 13
 Thomas Jefferson, 13
 William Thompson,
 13
 Bickford, 13
 Manverse, 13
 Blevens
 Everett, 6
 Blevins
 Brooks, 39, 40
 Bloodworth
 Annie, 15
 Daryl W., 15
 J. Fred, 15
 Loreta L., 15
 Odie, 15
 Opal L., 15
 Thomas H., 15
 Wayne C., 15
 Blythe
 W. F., 25
 Boesser
 H. G., 25
 Bogart
 Ellie, 15
 W., 15
 W. F., 15
 W., 15
 Boles
 John, 7
 Bolsterli
 Margaret Jones, 36
 Bolton
 Dalia Beatrice, 15
 David Edwin, 15
 Effie Pearl, 15
 H. D., 15
 H. H., 15
 James Demarcus, 15
 Martha F., 15
 Sheila, 32
 Thomas L., 15
 Bone
 Miss Artie, 7
 Bonham
 R. A., 26, 29, 30
 Boone
 Miss Georgia, 7
 Bowers
 Miss Julia, 7
 Bowman
 Ida F., 15
 Iva F., 15
 Porter W., 15
 Boyd & Barnes, 25
 Boyle
 Susan Gardner, 35
 Boyles
 Mrs. Jack, 7
 Bradahan
 I., 8
 Bradley
 A. A., 15
 Brady
 Miss Mae, 7
 Brandon
 Sallie Gay, 15
 William F. P., 15
 Branscom
 Broyd O., 15
 Hardy, 15
 Lillian, 15
 Martha, 15
 Brantley
 Michael Joel, 32
 Mike, 33
 Breckenridge
 G. T., 9
 Mrs. Mary A., 9
 S., 9
 Brents
 J. P., 8
 Brewster
 A. C., 29
 A. L., 29
 Dr. A. L., 30
 Bridges
 Anna, 33
 Thomas J., 15
 Briggs
 Elisha D., 9
 Hughs, 31
 Brightwell
 E., 8
 Brinkley
 Ethel O'dell, 15
 James, 14
 Britz
 Mary Myrtle, 15
 Brooks
 John, 32
 Brown
 Jane, 31
 Sarah L., 29
 Thomas, 31
 Browne
 Mrs. I. H., 6
 Brumfield
 L. M., 7
 Brumlov
 Ralph, 14
 Brumlow
 Alice C., 15
 Alma, 15
 Carthal, 15
 Claude, 15
 Eunice, 15
 Herman S., 15
 J. N., 15
 Jewell, 15
 T. J., 15
 Walter H., 15
 Bullen
 Gate I., 7
 Burch

Catherine Webb, 15
 Burkhart
 Beulah S., 15
 Clanch S., 15
 Dahlia, 15
 E. S., 15
 Elbert, 15
 Essie E., 15
 Fines A., 16
 Gerald P., 16
 Johnnie D., 16
 Loyd A., 16
 Maggie, 16
 Mary Frances, 16
 Mildred L., 16
 Nora, 16
 Otie E., 16
 Robert P., 16
 Rufus G., 16
 Thomas L., 16
 Tinnie O., 16
 twins, 16
 Vera Clyster, 16
 Wally F., 16
 Will H., 16
 William E., 16
 William H., 16
 William R., 16
 Burnette
 Anna, 16
 Butler
 Carthal, 16
 Glen, 14
 Jim W., 16
 Joanna M., 16
 Joe L., 16
 Leonard, 16
 Lucy V., 16
 Minnie, 16
 Rosalie, 16
 Sarah Jane "Sallie",
 32
 Troy Glen, 16
 Walter Curtis, 16
 Byars
 Rev. F. D., 30

C

Calhoo(u)n
 W. B., 8
 Calhoun
 Nellie Jean, 16
 Nina Lee, 16
 William P., 16
 Callicoatte
 Dr. A. W., 29
 Cambron
 Samuel, 6
 Campbell
 Rev. Sam, 9
 Carmichael
 Charles W., 16
 Charles Wm., 16
 Lillie K., 16
 Carr
 Bill, 39
 Carter
 Barthane, 31
 Benjamin, 31
 Jemes, 31
 John, 31
 Robert, 31
 Sarah, 31
 Sion B., 31
 William, 31
 Cato
 Cecil Foye, 16
 Leonard C., 16
 Cearley
 Dan L., 32
 Chadwick
 Miss Bertha, 7
 Chappell
 Rebecca, 32
 Sarah Anne, 32
 Chism
 Ben B., 25
 choles
 Dr. Henry L., 22
 Christopher
 Lula, 27
 Christy
 O. J., 16

Claibourne
 R. P., 29
 Clark
 Dr. and Mrs. W. A., 9
 Fulton, 7
 Miss Gracie, 7
 Miss Lucile, 9
 R. M., 8
 Clayton
 Gen. Powell, 12
 T. J., 8
 Cleburne
 Patrick, 5
 Cleghorn
 Austin, 7
 Clements
 Miss Vera, 6
 Cobbs
 P. M., 25
 Cochran
 S. M., 7
 Cockrell
 Florence, 33
 Cockrill
 S., R., Jr., 25
 Coffey
 Brewer E., 16
 Gladys B., 16
 Coffman
 J. B., 7
 Cole
 H. C., 7
 John H., 16
 Ozella, 16
 Roy K. "Pete", 16
 Will L., 16
 Collins
 Earnest A., 16
 George Banks, 12
 Louella Cora, 16
 Moses, 32
 Richard Lawrence, 12
 Robert Glen, 16
 Robert Lee, 17
 Connell
 W. M., 8
 Cook

Elieen, 31
 Cooper
 Col. Wise A., 28
 Mrs. Jo Ann, 32
 Corder
 Infant, 17
 Cossy
 Miss Rosie, 7
 Costello
 Alma L., 34
 Cox
 J. C., 8
 Crabb
 John Anderson, 34
 Critz
 Minerva, 17
 Crockett
 Erney, 17
 Cross
 M. A., 25
 Cullefer
 Henry H., 17
 Mary Frances, 17
 Willie, 17

D

Daniels
 Will, 9
 Davis
 Jettie Cross, 17
 Jno. T., 29
 John, 7, 27
 Ray, 27
 Robert H., 17
 Day
 Mr. and Mrs. James,
 27
 Deen
 Mattie Sowell, 17
 Deer
 Mable Harrison, 17
 Degen
 John, 26, 29
 DeSoto
 Hernando, 39
 Dial

 M., 9
 N., 8
 Dickson
 C. Opal, 17
 H., 17
 Jessie E., 17
 Raymond A., 17
 Dodd
 Hugh, 7
 Donaldson
 Mrs. Jas., 26
 Donham
 Elizabeth M. "Lizzie",
 32
 Downing
 Cori Sedwick, 33
 Duffel
 Estell W., 17
 Robert, 17
 William, 17
 Zora, 17
 Dugger
 Ralph, 7
 Dunkin
 Miss Dora, 7
 Dunlop
 W. S., 25
 Durden
 J. P., 25
 Durham
 Carl F., 17
 Mable, 17

E

Eagle
 John P., 25
 eaks
 John F., 23
 earby
 Margaret, 24
 Eddleman
 Jan, 25, 35
 Eddlemon
 Sherida K., 40
 Edmonds
 William T., 7
 Edmonson

 Mrs. M. B., 30
 Edwards
 Eliza Jane, 17
 Henry B., 17
 James, 17
 William, 32
 Elliot
 Lucinda, 34
 Ellis
 Thomas E., 14
 English
 Florence M., 17
 George, 17
 Julia L., 17
 Oscar O., 17
 Tonie H., 17
 Erwin
 Elizabeth (Guy), 34
 Mae, 34
 Pat, 34
 Samuel George, 34
 Vera, 34
 William Shaffer, 34
 ess
 Charles E., 23
 Euper
 W. L., 25

F

Fagan
 Gen. James, 11
 Gen. James A., 12
 Gen. James F., 10
 Fellows
 Capt. Sam, 28
 Sam'l, 30
 Ferguson
 R. G., 29
 Files
 Peter J., 7
 Finley
 L. C., 29
 Fitch
 David N., 17
 Susan, 17
 Forest

Ollie Hubert, 17
 Forrest
 Dale, 14
 Rev. Mr., 9
 Fort Smith, 27
 Foster
 Otto, 7
 Frisby
 Abraham, 33
 Josiah, 33
 Samuel, 33
 Fugate
 Richard N., 17
 Fulmer
 Mrs. Lummie, 7

G

Gabe
 Mildred L., 17
 Ralph T., 17
 Gantt
 Fred, 7
 Garcia
 Kathryn L., 33
 Garrard
 C. P., 17
 Charlie P., 17
 Miinnie P., 17
 Garrison
 Annie E., 17
 Rodman C., 17
 Thomas Monroe, 32
 Gartmann
 Capres, 32
 Hezekiah, 32
 Gates
 Flodelle Hooten, 32
 Gay
 Binnie, 17
 Carthal E., 17
 Odean C., 17
 Thomas M., 17
 Geldrich
 Mrs. Francisca, 6
 George
 J. T. & Co., 30

Georgia
 Dallas, 8
 Graysville, 8
 Ringold, 9
 Ghent
 Herlon, 17
 Matt M., 17
 Molly M., 18
 Gill
 J. H., 25
 Patricia K., 33
 Gilles
 Frank Leroy, 18
 James M., 18
 Lillie May, 18
 Mary E., 18
 Gillet
 Oscar, 7
 Gilliam
 C. P., 18
 Ida, 18
 Gillihan
 Miss Mattie, 7
 Gipson
 Hetie L., 18
 Glass
 Emmet V., 18
 Emmet V., Jr., 18
 King, 14
 Thomas P., 18
 Glasss
 Lucile I., 18
 Glisson
 Eunice S., 18
 Isham D., 18
 Goff
 Oliver, 26, 29
 Vinton, 26, 27
 Gorton
 Nan Whitney, 34
 Grammer
 Jennie Beatrice, 18
 William, 18
 William Dote, 18
 Grantham
 Iva Mae, 32
 Graves

Ella, 27
 J. F., 27
 Gray
 Jack, 14
 Jack K., 14
 William Roy, 18
 Willie Jo, 18
 Greer
 J. D., 18
 Lee R., 18
 Margaret, 18
 Nettie C., 18
 Griffith
 Malinda, 18
 Miss Cleffie, 6
 Guilds
 John Caldwell, 38
 Gwinn
 Helen M., 18
 James R., 18
 John D., 18
 Leatha B., 18

H

Hackett City, 26
 Haile
 Susan H., 18
 Hall
 Bernice, 18
 Hazel, 18
 Helen Martin, 7
 Lillie, 18
 Monroe, 18
 Ham
 Opal, 18
 Hamilton
 Rev. J. M. C., 27
 Hanley
 T. B., 34
 Hanson
 Mis Marie Jane, 7
 Hardin
 W., 8
 Harrington
 Will, 7
 Harris

Anita B., 31
 Edwin Eugene, 11
 Kelly, 7
 Rev. I. F., 27
 Harrison
 Albert A., 18
 Alton, 18
 Annie H., 18
 baby, 18
 Basil, 18
 D. B., 18
 Edd H., 18
 Eunice May, 18
 Fannie Sue, 18
 Garland Q., 18
 Gracie L., 18
 Henry Milum, 18
 James, 18
 Jessie Griffin, 18
 John E., 18
 Joseph C., 19
 Julia, 19
 Kiddie Sue, 19
 Linda M., 19
 Linnie, 19
 Mable K., 19
 Mary Jane, 19
 Vera Nola, 19
 Viva, 19
 Walter Edward, 19
 Willis Ivy, 19
 Harshaw
 Mrs. Bennetta, 30
 Rev. J. E., 30
 Hart
 Sarah A., 19
 Thomas, 19
 V. J., 19
 Hastings
 Miss Alein, 7
 Hawkins
 Dorothy Inez, 30
 Henry E., 32
 M. and Mrs. J. G., 30
 Head
 R. M., 6
 Heard

L. W., 25
 Heim
 Ferd., 25
 Helms
 J. M., 8
 Hickman
 Miss Ora, 7
 Hill
 A. R., 7
 Hite
 Effie E., 19
 Emmette, 19
 Ester, 19
 Hobbs
 Jack, 32
 Hofer
 Darlene M., 33
 Holdridge
 Jas. K., 8
 Hooks
 Homer Virgil, 19
 Sona, 19
 Hopkins
 Moses, 34
 Hopper
 Madison R., 19
 Howard
 Bridges, 33
 Charlotte, 33
 Elihue, 33
 W.H. & Co., 29
 Hubbard
 Margaret Harrison, 1
 Huff
 Robert, 7
 Huffman
 J. J., 7
 Huntington, 26
 Huston
 Charles Marin, 19
 Daniel, 19
 L. L., 19
 Maud B., 19
 Raphael, 19
 Hyde
 Gene, 39, 40

I

Ince
 John, 31
 Irwin
 Annie King, 19
 Ben Block, 19
 Charlie, 19
 Elizabeth Webb, 19
 Eloise, 19
 Green, 19
 James G., 19
 Jas., 8
 John, 19, 34
 John F., 19
 Leonidas, 19
 Leroy Steele, 19
 Otho King, 19
 Thomas P., 19

J

Jackson
 J. R., 27
 Jenkins' Ferry, 10, 11
 Johansson
 M. Jane, 37
 Johnson
 Albert, 34
 Joan, 34
 Joe, 27
 Lula, 34
 Martha A., 34
 Miss Georgia, 7
 T. H. R., 25
 Johnston
 James J., 5
 Mrs. Minnie, 6
 Jones
 C. P., 25
 C. R., 6
 Ella C., 19
 Lee, 7
 Roy, 19
 William, 19
 July
 James, 6

K

Kansas
 Cherokee, 8
 Keartly
 J. B., 8
 Keesaw
 Laurie Carter, 31
 Kehoe
 Martha J., 5
 Keith
 Miss Lucy, 7
 Kelleam
 James M., 25
 Kemp
 John, 9
 Kennedy
 Richard, 6
 Killebrew
 M., 19
 Kinebourgh
 J. J., 8
 King
 George W., 34
 Miss Susie, 7
 Rev. Harry, 7
 Kirby
 infant son, 19
 Lillie, 19
 Kirsey
 Bud, 7
 Klein
 Lewis, 8
 Kloster
 Ann Linley, 33
 Knoble
 Chas., 25
 Kurck
 George C., 19
 infant, 20
 Joyce M., 19
 Kyle
 Miss Myrtle, 7

L

Lamb

J. H., 20
 Lanier
 Chester B., 20
 Latham
 Miss Mary, 7
 Latimer
 Lela Davis, 20
 Law
 John, 38
 Lawrence
 Miss Alta, 7
 Lee
 John, 7
 Rose Mary, 31
 Lewis
 G. W., 20
 Mary J., 20
 Mrs. Francis, 7
 Linder
 Raymond James, 20
 Linley
 James, 33
 Lites
 Caleb, 32
 Mary Portia, 32
 Little
 J. J. & Co., 25
 Long
 Basheba, 32
 James B., 29
 Louiisiana
 Catahoula Parish, 33
 Louisiana
 Ouachita Parish, 33
 Lowe
 Mrs. Loretta, 7
 Lockett
 J. N., 30

M

Macklemerry
 Jas. M., 26
 Maddock
 Alta R., 20
 Alvin L., 20
 Lura, 20
 Millard G., 20

Mahaney
 Geo., 28
 Geo. S., 26
 Mahle
 Mrs. S. E., 6
 Mansfield, 29
 Mark's Mill, 10
 Mark's Mills, 11
 Marks
 Hastings, 12
 Henrietta, 26
 Marmaduke
 Gen. John S., 10
 Marmon
 N. L., 28
 Marshall
 Alexander, 33
 Elizabeth, 33
 George W., 33
 Hardy H., 33
 Henry, 33
 James K., 33
 Jane/Jennie, 33
 Joel, 33
 Margaret, 33
 Rebecca, 33
 Stephen, 33
 Tennessee, 33
 William, 33
 Martin
 B. F., 8
 Jesse, 30
 Joe, 29
 Marvin
 Zanita, 31
 Maxey
 Gen. Samuel B., 10
 May
 Frank, 7
 Mays
 Miss Lonnie, 7
 McArdo
 Geo. W., 8
 McCaleb
 David R., 31
 Mary Jane, 31
 McCall

Wm., 8
 McClain
 J. C., 8
 William, 7
 McConnell
 Dr. J. W., 29, 30
 McCurry
 Mrs. Dan, 6
 McDaniel
 Billie, 7
 McDonald
 A. A., 25
 McGee
 George, 7
 McKaney
 J. S., 26
 McKinney
 Charles R., 20
 G. W., 20
 Lonie M., 20
 Nanxy?/Nancy? E.,
 20
 Ray, 20
 Theodore C., 20
 William J., 20
 Willilam A., 20
 McKinney,
 Veola, 20
 McKuin
 Ron, 32
 McLelland
 R. E., 7
 McMaster
 S. T., 29
 McNeilly
 Donald P., 35
 McQuary
 Rome, 7
 Meluturf
 W. D., 28
 Miller
 Stuart A., 29
 Mills
 Emily, 9
 Mr. and Mrs. J. E., 9
 Mississippi
 Natchez, 8

Mississippi River, 36
 Missouri
 Clark Co., 34
 Jefferson City, 8
 Lexington, 8
 Melville, 8
 Mt. Vernon, 8
 Springfield, 8
 Stone County, 8
 Moneyhan
 Carl, 37
 Monroe
 B. F., 8
 Monzingo
 Miss Myra, 7
 Moore
 Miss Mary, 9
 Morgan
 Billie Jo, 20
 James H., 20
 James Henry, 20
 Lemuel C., 32
 Leonard O., 20
 Martha J., 20
 Mary Elizabeth, 20
 Mary F., 20
 Minnie K., 20
 Mollie M., 20
 Mollie Rowena, 20
 Morton
 J. B., 7
 Moser
 Mrs. Stella, 6
 Moses
 John H., 7
 Miss Hazel, 7
 Moss
 Dr. Hugh N., 32
 Edwin, 32
 Mount
 Miss Julia, 7
 Mullens
 Alta, 20
 Bettie, 20
 Carrie M., 20
 Durrell, 20
 George, 20

Henry D., 20
 James, 20
 Lena B., 20
 Thomas, 20
 Victoria, 20
 Muse
 Joseph B., 20

N

Nash
 Sidney, 7
 Neal
 D. J., 20
 Gladys Marie, 20
 infant, 21
 James R., 20
 John W., 21
 Laura G., 21
 Lucy A., 21
 M. H., 21
 Mary A., 21
 Mary J., 21
 Susan H., 21
 Verna May, 21
 W. D., 21
 Neighbors
 Miss Etta, 7
 Nennich
 Miss Clara Louise, 7
 Nettles
 Nancy, 33
 Nipper
 Joe, 7
 Noble
 Neal, 31
 Nokes
 Burnie B., 21
 Callie S., 21
 Charles D., 21
 Lillie M., 21
 North CARolina
 Salisbury Dist.,
 Rowan Co., 33
 Norton
 Martin Holley, 21
 William F., 21

William F., Jr., 21
Nugent
Pattie, 21

O

Osborne
Miss May, 7
Otho C., 24
Ouachita River, 10
Owen
Loyd, 7
Miss Nance, 7
Owens
Mrs. W.H., 27

P

Parker
John, 21
Margaret Parks, 21
Parks
David D., 24
Elsie Battist, 21
John A., 24
John B., 21
Luther Brown, 24
Mary Jane, 24
Mattie A., 21
Nora B., 24
S. C. Sallie, 21
Statira Jane, 24
William A., 21
Patterson
Alexander P., 33
Evan S., 33
James J., 33
Margaret M., 33
Sarah A., 33
Tillman E., 33
Payne
Boswell Blackburn,
33
Pea Ridge, 35
Pearson
W. E., 27
Penny

Marshall, 28
Perry
Harriett, 37
Serene E., 21
Theophilus, 37
William M., 21
Petersen, 34
Peggy, 34
Pettus
D. W., 21
Demarcus, 21
John A., 21
Mary Lela, 21
Rector, 21
Sarah, 21
Petty
Annie E., 21
Phelps
Frank, 27
Washington, 32
Phillips
Lewis S., 34
Pickens
J. T., 8
Pittman
Daniel Robert, 32
Poe
Mamer, 21
Pogue
Mrs. May, 6
Poison Spring, 10
Polk
George Harvey, 32
Joseph, 32
Nancy (Couch), 32
Powell
Margaret Baxter, 21
Prairie Grove, 35
Price
Annie C., 33
Edward Morgan, 9
Ella, 21
Howard Thomas, 21
Riley, 21
Tom, 21

Q

Quin
John T., 31

R

Ramsey
Esquire A., 10
Randel
S., 29
Ray
Sam, 21
Sarah T., 21
Redmond
M. J., 27
Redus
J. S., 7, 21
John C., 21
Mary H., 21
W. G., 21
Reeves
Jno., 9
May, 21
Viola, 27
Renfroe
J., 30
Renzel
Chas. F., 8
Reynolds
Edith, 31
L. R., 7
Rice
Della M., 34
Richmont
Cynthia Denise, 22
Riggins
Frank, 7
Riley
J. W., 27
Luther Q., 22
Roadlander
R. C., 9
Roberts
E. W., 7
Robertson
Stephen, 34

Robinson
Miss Jane, 6
Roes
Mrs. C. G., 32
Roman
Carrie, 7
Rountree
W. S., 25
Ruhl
Sylvia, 22
Russell
Edith, 34
Rye
Loney, 22

S

Safford
E. C., 8
Sailor
Delia A., 34
Elizabeth (Bettie), 34
Isabelle, 34
Jonathan, 34
Lucy J., 34
Nancy Anna (Annie),
34
Saline River, 10
Sammans
B. M., 8
Sammons
Jas., 8
Sanders
Ed, 10, 12
Schales
Miss Pearl, 7
Scherier
Anton, 29
Scholes
Elizabeth, 22
Georgianna, 22
Schuster
Herman, 28
Seversen
Deb, 33
Shea
William L., 35, 36

Shelby
Gen. J. O., 10
Shirey
L., 8
Shreve
Henry, 39
Shurley
Sephania F., 32
Simms
William Gilmore, 38
Simpson
Avanell Butler, 22
Lonnie, 22
Siratt
N. M., 8
Skillern
James W., 22
John, 22
Mildred, 22
Slavens
J. S., 6
Sloan
Aura Gray, 22
Smith
Belle H., 22
Ben F., 29
Bon, 28
Charles, 7
Della, 22
E. Fletch, 22
Earlie, 22
Earnest A., 22
Edward D., 22
Edward G., 22
George S., 22
J. C. Olean, 22
J. W., 9, 22
John E., 22
Laura A., 22
Lillie O., 22
Lula O., 22
Mrs. E. F., 22
W. D. E., 9
Smoot
John M., 29
Sowell
B. F., 22

B. Florence, 22
Denne W., 22
H. A., 22
H. F., 22
Ida E., 22
J. E., 22
J. W. "Hub", 22
Lulah May, 22
M. E., 22
R. E., 22
Samuel B., 22
Spain
S. E., 7
Starr
Belle, 6
Steele
Gen. Federick, 10
Stephens
Miss Margaret, 7
Sterman
W. M., 9
Stevenson
Corinne, 33
Steward
Frankie, 22
Stewart
J. R., 7
Miss Amanda, 7
Stotts
Sarah Videtta, 13
Stracener
Dealie A., 22
J. Frank, 22
Ollie Dell, 22
William M., 22
Suffridge
Lynda, 13, 35
Sullivan
B. F., 22
baby, 22
infant, 23
Lillie H., 22
Rowena, 22

T

Talamene

Jake, 29
 Talton
 A. B., 7
 Taylor
 Joseph, 32
 Orville W., 37, 38
 Teaffe
 Miss Bettie, 7
 Tennessee
 Chicamaqua, 8
 Dyer Co., 33
 Fayette Co., 32
 Franklin, 8
 Missionary Ridge, 8
 Pulaski, 8
 Rutherford Co., 33
 Rutledge, 8
 Shelbyville, 8
 White County, 9
 Terrell
 G. T., 30
 Terry
 R., 8
 Thaden
 Louise, 39
 Thomas
 John Anderson, 32
 Miss Bessie, 6
 Thompson
 William, 33
 Wood E., 25
 Tibbit
 W. I., 8
 Tillay
 E. W. & Co., 29
 Todd
 Adam, 31
 Townsley
 W. S., 28
 Trout
 Miss Jennie, 6
 Turner
 Clyde M., 23
 Velma, 23

U

Uptmoor
 B. A., 25

V

Vaughan
 William R., 34
 Vess
 Ausie Clifton, 23
 Susie E., 23
 Vest
 George, 7

W

Walker
 Artie Lee, 23
 C. F., 23
 D. J., 8
 Ellen Flowise, 23
 Emma J., 23
 H. C., 23
 John M., 23
 Rachel D., 23
 Wilson, 27
 Z. M., 23
 Walkers Greyhounds, 37
 Ward
 Daniel D., 31
 Margaret, 33
 Warren
 Fran Alverson, 6
 Wash
 Annie Eliza, 23
 Watson
 Essie M., 23
 Luiza, 23
 Martha J., 23
 Sammie, 23
 Weeks
 Addie, 23
 Weaver
 J. F., 25
 J. Frank, 28
 Webb

Grace Hidges, 23
 John M., 23
 John Raymond, 23
 Sarah C., 23
 William C., 23
 Welch
 Emma Frances, 24
 Emma O., 23
 James M., 24
 Joseph Franklin, 23
 Laura A., 23
 Martha E., 24
 Ruth, 24
 William C., 23
 William Clifton
 "Spud, 14
 William H., 23
 West
 Annie F., 23
 Jeff William, 23
 R. L., 26
 R. L. & Co., 30
 William B., 23
 Wayne
 Jeannie M., 39
 Whetzel
 Alfred, 6
 White
 Eve N., 23
 G. L., 23
 George L., II, 23
 Mary M., 23
 Veola M., 23
 White River, 39
 Whitehead
 George, 9
 Whitson
 Bessie, 32
 Susanna Jane "Sudy",
 32
 Vida, 32
 Wiggs
 Edral B., 23
 Francis M., 23
 Harvey T. Mortis, 23
 Wild
 Edward, 32

Jane, 32
 Wilder
 Laura Ingalls, 39
 Wiley
 Mrs. Jane Sparrow,
 34
 Wilhaf
 C. H., 26
 Mrs., 26
 Wilkerson
 Miss Bernice, 7
 William
 Prince of Orange, 10
 Williams
 Herbert, 23
 J. A., 25
 J. A., 28
 John F., 25
 Mrs. Sarah, 7
 Myrtle, 23
 Nancy A., 39
 Walter R., 7
 Williamson
 Michael J., 33
 Willis
 J. M., 8
 Willson
 Janet Erwin, 34
 Wilmeth

Myra, 31
 Wilson
 Wanda, 14
 Wanda Jean, 24
 Winchester
 Robertson (Bob), 34
 Wiseman
 Miss Della, 7
 Witcherville, 27
 Wolf
 John Quincy, 39
 John Quincy, Sr., 39
 Wood
 Ernest Floyd, 24
 Ms. Ruby Myres, 24
 Woodard
 Jann, 30
 Woodruff
 W. E., Jr., 25
 Woodson
 Maude Irene, 24
 Woosley
 Norma Jean, 24
 Wooten
 John R., 31
 Worth
 E. B., 7
 Wortham
 Etta L., 24
 Lillie A., 24

Lyde E., 24
 Wright
 Edith V., 24
 Edward Ausburn, 32
 Gradie W., 24
 Michael, 32
 Wyatt
 Margaret C., 24
 Mary Ann, 31

Y

Yancy
 James M., Jr., 24
 Yearby
 Bessie, 24
 Clementine, 24
 George W., 24
 John F. E., 24
 John T., 24
 Oho W., 24
 oinfant, 24
 Oris E., 24
 R. N., 24
 son, 24
 Young
 J. W., 25, 29
 Marjorie, 34

