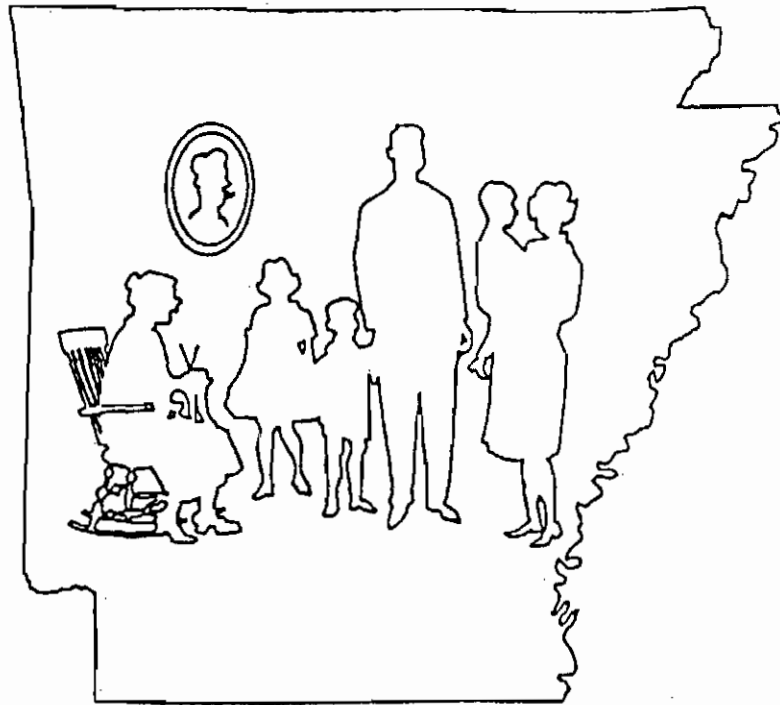


ISSN 0571-0472

1962-2002



THE  
ARKANSAS  
FAMILY  
HISTORIAN  
ARKANSAS GENEALOGICAL SOCIETY, INC.

VOLUME 40, NUMBER 1

MARCH 2002

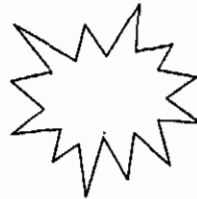
## Arkansas Genealogical Society

### Officers and Directors

President	Russell P. Baker (2003)	6525 Magnolia, Mabelvale, AR 72103
Vice President	Jan Hearn Davenport (2002)	1 Cinnamon Rd., North Little Rock, AR 72120
2 <sup>nd</sup> Vice Pres.	Linda McDowell (2003)	14617 Sara Dr., Little Rock, AR 72206
Treasurer	Alvin Black (2004)	PO Box 1103, Mount Ida, AR 71957
Rec. Sec.	Dorathy Boulden (2003)	913 Arkansas, El Dorado, AR 71730
Historian	Wensil Marsh Clark (2004)	1211 Biscayne Dr., Little Rock, AR 72221
	Bobbie Jones McLane (2003)	222 McMahan Dr., Hot Springs, AR 71913
	Ed Sanders (2002)	10 Choctaw Dr., Searcy, AR 72143-5906
	Jan Eddleman (2002)	1807 Sunshine Mine Rd., Hackett, AR 72937
	Lynda Suffridge (2004)	3801 Caraway Ct., North Little Rock, AR 72116
	Louise Mitchell (2002)	PO Box 129, Brinkley, AR 72021-0129
	Glenn A. Railsback, III (2003)	PO Box 7226, Pine Bluff, AR 71611-7226
	Arliss Ray (2004)	500 Pakis Rd. No. 2B, Hot Springs, AR 71913
	Carolyn Hervey (2004)	2105 S. Martin, Little Rock, AR 72204
	Steve Purdue (2003)	508 Dobbs St., Benton, AR 72015
	Gloria Futrell (2003)	2111 Hinson Rd. No. 1, Little Rock, AR 72212
	Tommy Carter (2001)	5901 JFK Blvd. No. 3625, N. Little Rock, AR 72116
	Rita Henard	5415 C St., Little Rock, AR 722204-3472
Nancy Britton	215 North 8 <sup>th</sup> , Batesville, AR 72501	
Suzanne Jackson	1604 Wewoka, North Little Rock, AR 72116	
Peggy Hackler	2020 N. Erstan Ave., Fayetteville, AR 72703	

(term ending)

Editor Margaret Harrison Hubbard 1411 Shady Grove Rd., Hot Springs, AR 71901



*The Arkansas Family Historian* is the official publication of the Arkansas Genealogical Society. It is published quarterly by the society and entered in the mails under Postal Permit 418 at Conway, AR.

Individual membership rate is \$20.00 per calendar year. Four issues constitute one year's membership. Membership may be entered by submission of dues and enrollment data to Arkansas Genealogical Society, PO Box 908, Hot Springs, AR 71902-0908.

Neither the Arkansas Genealogical Society, the Board of Directors thereof, nor any individuals or committee assume any responsibility for information or materials included herein. Contributors of material are indicated, and any correspondence should be directed to those persons. Notify the Society of any needed corrections.

# The Arkansas Family Historian

Published Quarterly by Arkansas Genealogical Society

PO Box 908, Hot Springs, AR 71902-0908

## Editor

Margaret Harrison Hubbard

## Publication Information

The *Arkansas Family Historian*, the official publication of Arkansas Genealogical Society, Inc., is published four times a year: March, June, September and December. Commercial advertising is not accepted

ISSN 0571-0472

## Editorial Policy

AGS welcomes contributions of family records, public record transcriptions and other information of interest to those interested in family history and genealogy in general and in Arkansas specifically. Responsibility for the accuracy of information and for opinions, omissions and/or factual errors is that of the contributor.

## Manuscript Submissions

Submitters of articles and material for possible publication in the AFH are requested to send typewritten or mechanically generated manuscripts on white 8 ½ x 11 inch paper, double-spaced, one-inch margins on all sides, with all pages numbered. The sources from which the material was obtained, specific statements of facts, or statistical information MUST be documented; that is, the specific, detailed source description must be listed either within the body of the text or as notes. Previous publication of material in any form must be brought to the attention of AGS. AGS encourages submissions on IBM compatible computer disks in Word for Windows or ASCII format, accompanied by a hard copy of the material.

## Membership

Membership is by calendar year and may be entered at any time of the year. (Late subscribers will receive the year's back issues of the *Arkansas Family Historian*.) Individual membership is currently \$20.00 per year.

## Queries

Members of AGS are invited to submit one fifty-word Arkansas related query each year. See the Query Section for details.

## Book Reviews

Authors and publishers who wish to have reviews or notices of their work published in the *Arkansas Family Historian* are invited to submit a copy of the work with ordering information and price, if applicable.

## CONTENTS

President's Page	2
Box 908	3
In Remembrance	4
Pope Co. Order of Removal, 1865	5
Certificate of Arkansas	
Ancestry Report	6
Biographical Sketch of	
Gov. J. P. Eagle	7
Newspaper Abstracts 1916,	
1888, 1889, 1893	8
Early Arkansas Divorces	11
Forrest City United Methodist Church	13
More Old News (clippings)	18
Tolson Family Bible	21
Sparkman Cemetery, Dallas Co.	22
Melungeons in Arkansas	31
Arkansas Queries	33
Book Reviews and Notices	38
Index	39

## President's Page

---

The Arkansas Genealogical Society has been striving since its founding in 1962—this year marks our fortieth anniversary—to assist genealogists in Arkansas as well as across the nation with researching Arkansas family history. The current issue of this publication and the back files of the *Arkansas Family Historian* are a rich source of all kinds of genealogical information. At the end of this issue, one can find information about obtaining a complete set of our back issues on microfiche. What a wonderful resource to have at one's fingertips.

One of our many non-residents recently wrote asking why we did not have more information on a particular Arkansas county or a specific Arkansas subject. As the editor of a family newsletter myself, I know the answer to this question. We have not included such information because no one has sent it to us. The Arkansas Genealogical Society is an all-volunteer organization, including our faithful editor. We do not have professional researchers or publications staff members. All of the material we publish comes from our members and other interested persons. It is quite simple. If you would like to see more information on an Arkansas county or subject, consider yourself our arms, legs and eyes. We need your help in getting abstracts of marriages and other county records, lists of persons buried in abandoned cemeteries, death notices from rural newspapers, etc. Send us articles about your family history in Arkansas, abstracts of Civil War diaries or letters, names taken from tax lists, funeral home records and store ledgers. An interesting story drawn from your family research might also make a wonderful and instructive article. Arkansas related obituaries from your local newspaper might also be of interest (be sure to include the name of the paper and date). The list of needed information is endless. If you have a question about what kind of material to send, contact me at the address below. As you can

see, the *Arkansas Family Historian* is a cooperative effort and each of our readers is an integral part of it. Keep those cards and letters coming.

Later this year a major event in Arkansas genealogy will take place with the release of the 1930 U. S. Census. Because of federal government privacy regulations, the information has not been available to the general public before. The release date for these records is April 2002. Initially, these records may only be available at the National Archives in Washington, DC, and its regional offices. However, soon after that date, copies of the microfilm will begin appearing at other locations across the country. Eventually those wishing to use these records can order them through their local Mormon family history center. Several commercial firms have already begun advertising copies for sale. Copies of these records for Arkansas are already on order by the Arkansas History Commission and State Archives in Little Rock, and should be ready to use around May 1. Other Arkansas libraries and archives will be obtaining copies as well.

The format of the 1930 census is much like that of the 1920 census. One new feature of this census will be the information on veterans of all U. S. wars. More information on this and other features will be seen after the census is actually available. Arkansas is one of only eleven states, all located in the South, which has a Soundex index. It should list all families having children. We do not yet know whether or not it is a complete index. As always, it will help if the researcher knows the county and community of residence. The release should spur a renewed interest in 20<sup>th</sup> century roots. Happy ancestor hunting everyone.

Russell P. Baker  
6525 Magnolia Dr.  
Mabelvale, AR 72013  
[Gobgob3@mindspring.com](mailto:Gobgob3@mindspring.com)

**IN THE NEWS**

From the Mid Cities Genealogical Society Newsletter (Bedford, TX): Dec. 2001”

NGS Library Moving to St. Louis

The Washington DC – based National Genealogical Society has closed its library in order to move most of the books to their new home: St. Louis County Library, in a new “strategic partnership” the NGS library collection will be treated as a “special collection” of the St. Louis Library. The books will be available to all for on-site use as well as through interlibrary loan.

From the National Archives, Washington, DC 20408, News Release dated January 10, 2002:

National Archives To Release 1930 Census on April 1, 2002

Washington, DC... The National Archives will release the 1930 Federal population census for the first time on April 1, 2002. At that time, the microfilmed copies will be opened for research at the National Archives Building in Washington, DC, at 13 of the National Archives regional facilities across the nation and through National Archives rental program. The National Archives Building is located on Pennsylvania Avenue, between 7<sup>th</sup> and 9<sup>th</sup> Streets NW. The Microfilm Reading Room will open for research at 8:40 a.m., following an event marking the occasion. The event will be open to the press. For a complete listing of all National Archives regional locations and opening times, check the web site [www.nara.gov/genealogy/genindex.html](http://www.nara.gov/genealogy/genindex.html) ...

The announcement goes on to say that this, the 15<sup>th</sup> Federal Census, consists of 2,667 rolls of population schedules and 1,587 rolls of Soundex indexes for 12 southern states...

Central Delta Historical Society, 234 West Cedar, Brinkley, AR 72021, is in its 7<sup>th</sup> year and publishes its Journal covering the history and heritage of the central delta Arkansas area that includes Biscoe, Brinkley, Clarendon, Cotton Plant, DeValls Bluff, Holly Grove, Hunter, Monroe, Moro, Roe, Wheatley and the many rural communities, past and present. Membership dues are \$10.00 per year and can be sent to the above address.

Baxter County Historical Society, PO Box 1611, Mountain Home, AR 726540, has announced they are compiling and publishing the *History of Baxter County, Arkansas*, and are soliciting materials from those interested in the project. Write Keven Bodenhamer of that group for more details.

**Reunions**

All descendants and allied families of William and Dorcas Nichols; Joseph and Sarah Richardson Nichols; Ransom and Phoebe Gilliam Nichols: please make arrangements to attend the 20<sup>th</sup> reunion on Saturday, 8 June 2002 at Lake Charles State Park, 3705 Highway 25, Powhatan, AR 72458 (870-878-6595). For more information contact Oretha Nichols (Mrs. Edwin W.) Turner, 4 Woodland Dr., Jacksonville, AR 72076-2557 (501-982-5331).

**Seminars**

The Illinois State Genealogical Society will hold its annual Spring Conference on April 5-6, 2002, in Countryside, IL, at the William Tell Holiday Inn. The theme is Ethnic Illinois and the main speaker will be Dr. George Schwietzer.

The Federation of Genealogical Societies and the California State Genealogical alliance will sponsor “California 2002: A Goldmine of Diversity, to be held in Ontario, CA, August 7-10, 2002. Contact FGS at PO Box

200940, Austin, TX 78720-0940, for registration information and full particulars.

The Turnage Family America, 9815 East 29<sup>th</sup>, Tulsa, OK 74129, has announced their Annual reunion is set for July 19-21, 2002, in Wilmington, NC. Contact them for details.

The 8<sup>th</sup> annual Genealogical Institute of Mid-America will be held July 8-12, 2002, in Springfield, IL, at the University of Illinois. Instructors include Sandra Luebking, Michael Neill, Lloyd Bockstruck and Paul Milner.

For further information, contact the society at PO Box 10195, Springfield, IL 62791-1095.

Southern California Genealogical Society will hold its 33<sup>rd</sup> annual Genealogical Jamboree & Family History Faire on April 13-14, 2002, in the Exhibition Building of The Pasadena Center, Pasadena, CA. Contact them at 417 Irving Dr., Burbank, CA 95104 [scgs@earthlink.net](mailto:scgs@earthlink.net) for more details.

Louisiana Genealogical and Historical Society, PO Box 82060, Baton Rouge, LA 70884-2060 has announced its Seminar on Military Records, for Saturday, 27 April 2002 in Port Allen, LA. This will feature Craig R. Scott, CGRS, with lectures on military research. Contact the society for more data.

The Thirteenth North Arkansas Ancestor Fair is set for May 30-June 1 2002 at the Leslie Public School in Leslie, AR. For more information and registration contact James J. Johnston, 2333 N. East Oaks Dr., Fayetteville, AR 72703.

*Rainy Times*, a surname publication, has issued Volume 7, November, 2001. For information on this group, contact the editor, Marynell Bryant at RR 4 Box 56, Sulphur Springs, TX 75482

Texarkana USA Genealogical Society is holding a Spring Seminar on 27 April 2002 at the Eylau Christian Church in that city.

Contact them at PO Box 2323, Texarkana, TX 75504-2323 for registration data.

## *In Remembrance*

*North Little Rock Times*, November 29, 2001

Anne Wilkerson Morris, 68, of North Little Rock, who worked 15 years for the Chickasawba Chapter of the American Red Cross in Blytheville and edited publications for the Woodruff County Historical Society, died Wednesday, No. 21.

Born in Cotton Plant, she had completed a degree in journalism at Arkansas State Teacher's College and taught at Carlisle and Gillette. She was a member of the Alpha Sigma Alpha sorority and was active in organizations including AAUR, UDC, Arkansas Genealogical Society, LWML, North Pulaski Civil War Round Table, and taught a calligraphy class at Mississippi County Community College.

She co-edited the Woodruff County *Rivers and Roads and Points in Between* and compiled an index of the publications of the Woodruff County Historical Society.

She was a member of the First Lutheran Church in Little Rock, where she and her husband Rex coordinated the "Dinner Out" program for several years. Anne and Rex enjoyed traveling the United States in their RV to Naval reunions for the vessels Rex had served in his Navy career.

Services were held on Saturday, Nov. 24, at First Lutheran Church in Little Rock. Burial was in Cotton Plant. Anne Wilkerson Morris became a member of AGS in 1984 and later served on its Board of Directors.

*Arkansas Democrat-Gazette*, Sunday, December 23, 2001

El Dorado - Annie Laurie Spencer, 91, died Thursday. Former owner/operator of El Dorado Real Estate, survivors include

nephews and nieces, James V. Spencer III, Frederick S. Spencer, Adena Anne Riley Robbins, Mary Spencer Depper, Margaret Riley Pierce.

Service 3 p.m. Sunday St. Mary's Episcopal Church conducted by Young's. Memorials, St. Mary's endowment fund.

<http://youngs.plan4ever.com>

Annie Laurie was a founding member of Arkansas Genealogical Society and served on its Board of Directors for many years.

### Late Notice of Seminars

Late notice has been received of the Ancestor Swap Meet to be held in the Senior Activity Center, 623 Broad St., Gadsden, AL, from 8:30 a.m. to 3:30 p.m. Contact the Northeast Alabama Genealogical Society, PO Box 8268, Gadsden, AL 35902, for registration info.

Sixth Annual Angelina College Genealogy Conference, announced for July 26-27, 2002, will be held at the Angelina College Community Services Conference Center, Hwy. 49 South, Lufkin, TX 75902-1768. There will also be a one-day seminar on Using the Family History Library in Salt Lake City, UT, on March 2, 2002. Contact the college for info on both events.

## 1865 Order of Removal (Pope County)

From the Orville Gillet Collection at the Arkansas History Commission

Headquarters Detch 3<sup>rd</sup> Ark Cav  
Stationed at Norristown, Ark. April 65, 1865

Special Order)  
To one )

In obedience to orders from Col A.  
H. Ryan Comdg  
Post of Lewisburg

I am ordered to set you and your families across the Arkansas River. You will be allowed to take with you twenty days subsistence for yourselves and families the necessary clothing bedding and cooking utensils and teams to transport the same.

Mr. Barnett McElwee's family

Mr. John Vals' family

Mr. James Wells' family

Mrs. Widow Carr's family

Mrs. Woods' family

By order of  
D W Mason  
Maj Comdg Detrch  
3<sup>rd</sup> Ark Cav



# Certificate of Arkansas Ancestry Report

---

By Jan Eddleman, 1807 Sunshine Mine Rd.,  
Hackett, AR 72937

Arkansas Genealogical Society offers  
Certificates of Arkansas Ancestry issued in  
three categories:

**Colonial** – a resident of Arkansas before 1  
January 1804;

**Territorial** - a resident of Arkansas before  
14 June 1834;

**Ante-bellum** - a resident of Arkansas before  
6 May 1861;

**Nineteenth Century** - a resident of Arkansas  
before 31 December 1900

Send SASE with \$0.55 postage (2 ounces) to  
AGS, PO Box 908, Hot Springs, AR 71902-  
0908, for an application form for your  
certificate.

Ancestor: Thomas Marion Crain  
County: Conway  
Submitter: Benjamin Byron Crain  
2235 W. Glenalen Dr.  
Germantown, TN 38139

Ancestor: Edwin Stanton Armstrong  
County: Benton  
Submitter: Diane K. Reinhart  
11716 Elkhead Range Rd.  
Littleton, CO 80127

Ancestor: Robert Sherril Smith  
County: Woodruff  
Submitter: James P. Reinhart  
11716 Elkhead Rd.  
Littleton, CO 80127

## Antebellum

Ancestor: William H. Taylor  
County: Franklin  
Submitter: John H. Taylor  
12163 East 22<sup>nd</sup>  
Tulsa, OK 74129

Ancestor: Samuel G. Burrow  
County: Washington  
Submitter: Steven Charles Phillips  
1905 N. Kentucky Rd.  
Mexico, MO 65265

Ancestor: Mathew Edwards  
County: Ashley  
Submitter: Jo Ann Roth Taylor Cooper  
606 Sequoia Dr.  
Jonesboro, AR 72401-65072

## Nineteenth Century

Ancestor: James Elmore Wooten  
County: Arkansas  
Submitter: Eileen Cook  
6743 Foxthorn Rd.  
Canton, MI 48187

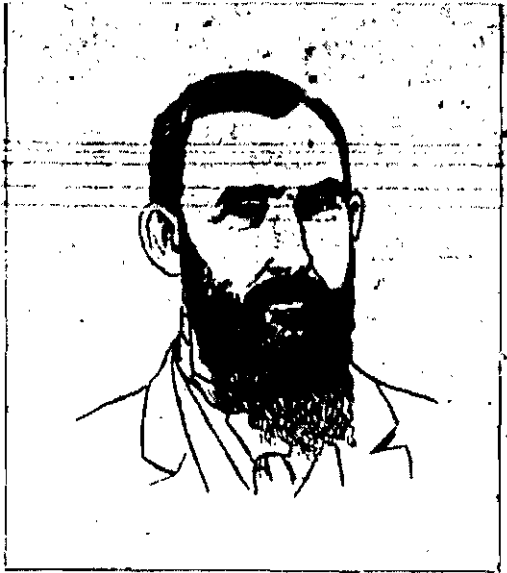




## Biographical Sketch of Governor J. P. Eagle

*Arkansas Gazette*, Jan. 3, 1885

Submitted by Pat Lape Bennett, 1576 E.  
Main, Cabot, AR 72023



Hon. J. P. Eagle, of Lonoke, Speaker  
Arkansas House of Representatives

J. P. Eagle was born in Maury county, Tenn., in 1837. Came to Arkansas with his father in 1839, and settled about twenty miles east of Little Rock-- then Pulaski county—now Lonoke—where he has resided ever since. He has spent almost his entire life on a farm, and in youth his opportunities for an education were limited. He entered the confederate army as a private soldier at the beginning of the war, and his faithful discharge of every duty won for him the esteem and admiration of his comrades and the officers under whom he served. He was several times wounded, once severely. At the close of the war he was lieutenant-colonel of the brigade of Arkansas regiments, commanded first by Gens. Churchill, McNair and Reynolds, and consolidated into one regiment under an act of congress, and surrendered with Gen. Joe Johnson in North

Carolina, July 1864. During the war he was imprisoned in Camp Chase and Fort Delaware five months. He returned home poor, and for several years followed hard manual labor on a farm. Feeling the need of some assistance in the studies he endeavored to pursue at home, he attended school about one year, part of that time at Mississippi college, Clinton, after he was 30 years old.

He was in the legislature of 1873, and took an active part in the support of Governor Baxter. When the Brooks-Baxter war was declared he was largely instrumental in bringing six companies from Lonoke county to support the Baxter government. Was in the extra session of the legislature of 1874 and was elected by that body as a member of the board to adjust claims against the state growing out of the Brooks-Baxter war. Was a member of the constitutional convention from Lonoke county, which formed the constitution in 1874. He was also a member of the democratic state convention in 1874, and was foremost in pressing the nomination of Senator Garland for governor.

He represented Lonoke county in the legislature of 1877, since which time he has been out of politics, except as a representative in the state and national democratic conventions of 1884, until elected to the present legislature by Lonoke county by a large majority. He has never been defeated for any office asked at the hands of the people.

His leading avocation has always been farming. He now cultivates about 1000 acres of land in that section of his county known as "Richwoods." He has also followed merchandising with some success. He is a regularly ordained Baptist minister of high standing in his denomination, doing missionary work at such times as his business suffered least from neglect. He is a liberal

man, and gives more to the Baptist cause than any other man in the state. He has had reasonable success in almost everything he has undertaken, which may justly be attributed to his energy and sound judgment. He is, in every sense of the term, a practical man.

He lived a bachelor until three years ago in this month, at which time he married Miss Mary K. Oldham, of Madison county, Ky., whom he had known for many years. In their frequent visits to our city they have formed a large circle of friends, who give them a cordial welcome into their midst.

Col. Eagle was elected to the position of speaker of the house over several able competitors, and we feel assured that a judicious choice has been made.



## NEWSPAPER ABSTRACTS

Submitted by Jann Woodard, 12008 Ginger Lane, Benton, AR 72015

### 1916 Deaths and Marriages

Listed in the *Arkansas Gazette*, 18 Apr. 1916:

#### Deaths

Mrs. A. L. Fullbright, near Relf's Bluff  
Robert Ross, near Rest  
Silas Bailey, near Beebe  
Walter Langford, near Lonoke  
W. H. Monroe of Lonoke, at Hot Springs  
George W. Johnson, at Sulphur Springs  
J. W. Hardin, at Stone  
Miss Trixie Gustin, at Leslie  
Mrs. Jane Ann Lay, at Tomahawk  
W. B. Taber, near Oakland  
Mrs. William Mabrey, at De Queen  
Price Campbell, at Franklin  
John Francis Marion Brown, near Warren

#### Marriages:

Robert Graves and Miss Beula Samples, at New Hope  
Scott Kendall and Miss Lena Goff, at Smithville  
Carson White and Miss Lura Stalmaker, at Smithville  
C. N. McGee and Miss Essie Dalton, at Imboden  
Ed Talburt and Miss Oma Sullivan, near Creswell  
William McCubbin and Miss Alma Hutcheson, at Mountain Home  
Jethro Holmes of Perry and Miss Lillian Holbrook, of Ola, at Ola  
Benjamin Burns of Mulberry and Miss Marjorie Carter of Ozark, at Ozark  
Grant Yarbrough and Miss Jane Ash, at McCrory  
Oscar Ruff and Miss Ruby Estell at Milo  
George Smith and Miss Artie Reeves at Milo  
Gene Anthony and Miss Violet Bolin at Milo  
Bob Noble and Miss Mattie Tumblison, at Milo

Nashville, Howard Co., AR, 1888

*Arkansas Gazette*, Nashville, March 30, 1888

Miss Mamie Smith, one of Nashville's most accomplished and popular young ladies, has returned home after a visit of some months to relatives and friends in the Lone Star State.

On the night of the 25<sup>th</sup>, a thief or thieves stole a fine mule and horse from Mr. John Young who lives out in the country a short distance from town.

A number of parties are in pursuit, but whether they will be successful or not is rather doubtful as the thieves had two or three days' start. They were seen at Antimony City, but nothing further has been heard.

This business seems to be looking up. On last night Messrs. Little & Yowell, proprietors of the Home Nurseries, also had a valuable horse stolen from their stable. As yet they have not been able to obtain any clue whatever to the thief. It is to be hoped that all who have been doing this kind of business will ultimately be run down and dealt with as is provided by law for such offenses.

Forrest City, AR, 1889

*Arkansas Gazette*, Sept. 15, 1889

Business has at last opened up, several bales of new cotton having been received and shipped by our merchants. This has given an impetus to trade which is quite refreshing after the dull summer.

The men who burglarized Callahan's Stave Camp, at Cicalla, fourteen miles east of here, last week, have not been apprehended, having sought refuge in the inaccessible swamps between the Mississippi and St. Francis rivers.

John Wilson, second son of the late sheriff, has been dangerously ill for some time, but is now somewhat improved. For several days his life was despaired of.

Dr. Frederic Howard of Jackson, Tenn., was to have delivered a lecture here Tuesday night, but an audience failed to materialize, and the doctor departed next day for Marianna where it is to be hoped he had better luck.

Messrs. Scott and Christy, two enterprising young men from Kansas, have opened a drug store in this place, making three in all.

V. V. Allen and wife (nee Miss Annie Winsted) of Howell Station, arrived in this city last week and will make it their permanent home, Mr. Allen entering the employ of J. L. Brandon, a leading merchant.

Mr. W. A. Baugh, of Pulaski, Tenn., is visiting his brother, Alderman J. D. Baugh, at this place. He is accompanied by his daughter, Mrs. Barclay.

All Over Arkansas - 1893

*Arkansas Gazette*, October 1, 1893:

Charles Roberts, who was convicted of murder in the first degree at the term of the Criminal Court of Paragould, was sentenced to be hanged by Judge Riddick on last Saturday. The day of execution was set for November 28, said day coming on Saturday. Judge Riddick has made a departure from the old-time hangman's day, Friday, this being the second instance in which he has sentenced murders to hang on some other day than Friday. Roberts was convicted to killing his wife, who was only 14 years old, and the annals of crime do not show a more heartless or cold-blooded deed. He deserves the full measure that will be meted out to him on the gallows. The law provides that the execution shall take place inside of an enclosure, not

public, and only twenty-five persons are to be present.

Mr. W. J. Bracy, an old and respected citizen of Camden, died suddenly yesterday and was buried this afternoon. A wife and several sons and daughters, residents of Little Rock, Hot Springs, Pine Bluff and Hope, survive him. The funeral was largely attended.

Congressman Dinsmore has appointed J. W. Puckett for Postmaster at Rogers. Mr. Puckett is a farmer, living four miles from town.

While Mrs. McLain, of Arkadelphia, was looking at a circus parade a thief entered her residence and stole a \$75 diamond ring, a \$15 opera glass and \$20 dollars in money.

J. C. Betten was seriously injured last week at Eureka Springs by the explosion of a lamp. The explosion knocked him senseless, in which condition he remained for several hours.

Newport: a red handkerchief in the hands of a man at Bradford today frightened a team attached to a wagon on which sat a 10 year old boy, the son of W. Whitley. The team ran the wagon against a tree, threw the boy out and killed him.

Paragould had quite a stir in police circles last Sunday morning. Some six or eight boys of about 15 and 16 years old were arrested and placed in "limbo" for breaking onto a beer house. Some of them are sons of people among the best citizens of this place.

Wednesday two men were robbed between Mound City and Hopefield. They were held up by three Negroes. Another man was attacked the same day, but he called out "come here, boys, here they are" and the robbers thinking he had a posse, ran away. From the *Marion Reform*.

News reached Nashville Thursday of a wholesale poisoning on the Cossatot River. It seems that a rejected suitor, fired by jealousy at the success of a rival, sought to destroy them by putting poison in the water at the wedding. Several parries drank the water, but no one was fatally poisoned.

A desperate but unsuccessful attempt at suicide was made by John Hackett, a white carpenter at Altheimer, Tuesday, when, with a razor, he gashed his throat in a horrible manner. Not meeting the desired death he begged a Negro to press his knee against his head and finish him, and upon refusal he made a rope of a bed sheet and hanged himself, but was again prevented from leaving this mundane sphere. 'He threatened to repeat his work and make a better effort next time, but his neighbors are watching him closely.



## Early Arkansas Divorces

Submitted by C. R. "Gina" Horton, 1221 Olive Jonesboro, AR 72401-3940. This has been published in Ms. Horton's volume of final decrees from Clay and Craighead Cos.

Obtaining a divorce in the late nineteenth and early twentieth century was not easy.

Arkansas law at that time provided six reasons a spouse could file for divorce:<sup>1</sup>

- 1) impotency;
- 2) willful desertion for one year, without reasonable cause;
- 3) a former spouse living at the time of the marriage, "sought to be set aside";
- 4) the conviction of a felony or other infamous crime;
- 5) habitual drunkenness for one year; cruel, barbarous treatment, "such indignities to the person of the other as to render his or her condition intolerable;" and
- 6) adultery.

Five of these reasons for filing occur in early Craighead County divorces. Here are some examples:<sup>1</sup>

[plff = plaintiff, the one asking for divorce  
dft = defendant, the other party]

Jesse R. Edgar, plff. vs. Mattie, dft.; 25 March 1881

Cause/Decree: court found couple married 2 March 1880 in Craighead County and at time of marriage, defendant "fraudulently represented herself to plaintiff to be a virtuous woman"; that at that time she was "pregnant by another man other than the plaintiff and was delivered of a fully mature child the third day of September, 1880. ..." and that "plaintiff never in any way condoned the fraudulent and immoral conduct of the defendant."

H.T. Sharp, plff. vs. Emma, dft.; 25 Nov. 1884

Cause/Decree: Court found that couple married on 25 September 1881 in the Parish of Concordia, State of Louisiana, and lived together there until June 1881. "Soon after said marriage, defendant began a course of cruel treatment towards plaintiff which she kept up until they separated"; she treated plaintiff with "continuous and studied neglect and contempt."

Mattie Howard, plff. vs. Robert: 16 September 1885

Cause/Decree" "...Robert Howard had recently been convicted of the crime of forgery in the Craighead County circuit Court for the Jonesboro District, of the State of Arkansas, and sentenced to a term in the state Penitentiary." Petitioner's maiden name of Hughes to be restored.

Eva Zankiser, plff. vs. W. H., dft.; 4 Oct. 1890

Cause/Decree: Abandonment and Non-Support. Court found that couple married in Missouri in 1876, then moved to Arkansas in 1884 where they lived together until 1886. In 1886, the defendant sent plaintiff to his relatives in State of Ohio, promising to send her money and bring her back as soon as possible. Soon afterwards, he failed to send any money and abandoned her. Court dissolved marriage and awarded custody of the couple's only child, a son (unnamed) to plaintiff till "further orders of the Court."

W. W. Wade, plff, vs. Margaret J.; 5 Oct. 1893

Cause/Decree: Court found that couple married in Craighead County, Arkansas in 1884, and that in month of December 1892, while plaintiff and defendant were temporarily living apart defendant committed adultery with one Jim Pearce and that "said offense has not been condoned by plaintiff."

Bessie Davis, plff., d. James, dft.; 25 Feb. 1897

Cause/Decree: Court found that couple married 2 October 1895, and at the time of their marriage James Davis had a living wife, from which he had never been divorced. ...” Plaintiff’s name was Bessie Garrett prior to her marriage, and court decreed that this name be restored to her.

In addition to filing a legal cause for divorce, a plaintiff had to allege and prove:

“a residence in the state for one year next before the commencement of the action;”

“that the cause of divorce occurred or existed in this state, or if out of state, either that it was a legal cause of divorce in the state where it occurred or existed, or that plaintiff’s residence was then in this state; and<sup>2</sup>

“that the cause of divorce occurred or existed within five years next before commencement of the suit: (Kentucky Code 14650, Amended in 1931)”

When these suits were filed due to abandonment, often the defendant has moved on. In that event, the Court appointed an attorney (later referred to as “ad litem,” or “for the purpose of the suit,) to represent the non-resident defendant and to make a report to the court. The defense attorney would, on the day the suit came to trial on the Chancery side<sup>3</sup> of the Circuit Court (all divorces were filed in Circuit Court), usually inform the Court that he had made a diligent search, but was unable to locate the defendant, and that all seemed to be as represented in the complaint.

Warning orders notifying these non-resident defendants that divorce suits were being filed against them were also often published in a local newspaper. The defendant was warned that, if he failed to appear within 30 days, then “the same would be taken as confessed.” If the defendant were available locally, or in another known county, then he could be summoned to appear.

In the years between March 19, 1878 and October 10, 1890, a total of ninety divorces were granted at the Jonesboro Courthouse (Jonesboro’s courthouse was located in the Western District of Craighead County. The county had another courthouse located at Lake City, known as the Eastern District.) From February Term, 1891, through July 1, 1897, one hundred and seven divorces were granted there, with abandonment being the most common reason for filing in both early Chancery Books. Many of the suits listed no cause at all, however.

Many of these early divorces in Arkansas contain information helpful to anyone seeking to trace his ancestors: a woman’s maiden name or former husband’s name; the date, state and county where the couple married; names and ages of the couple’s children; name of relatives and friends or neighbors who testified in court; name of the county from which a defendant had been summoned to trial; a legal description of land owned by a defendant and placed under a lien; as well as—often—the cause for filing for divorce.

Though difficult to obtain in the late 1880s and early 1900s in Arkansas, divorces did occur. Anyone seeking an elusive great-grandparent might do well to check these records.

<sup>1</sup> T. D. Crawford, *Annotated Civil Code of Arkansas* (St. Louis Law Book Company, 1931) 362-63; Charles Jacobson *Arkansas Chancery Practice* (St. Louis Law Book Company, 1940) 269-70.

1. While some of the earliest divorces in Arkansas were granted by the state legislature, each of these examples is from Craighead County.
2. When the decree includes a point such as “according to the laws of the state of Missouri,” I believe that the cause for filing—such as abandonment—took place in that state.
3. Chancery Court was renamed July 1, 2001; it is now known as “Domestic Relations Court” and handles only divorces and domestic abuse.

## Forrest City United Methodist Church

Submitted by Beth Longley, PO Box 11934,  
Salt Lake City, UT 84147

This is a register of the members of United Methodist Church of the Forrest City District Office,  
Forrest City, St. Francis County,

1	1Margrett. A. Evans	1866	By Profession	W. R. Knowlton	Lettered Sept 10 1887
2	Christine Gordon	1872	" "		
3	Mary. [or May.] Green	1866	" "		
4	Charles. Green	" "	" "		
5	A. A. Green	" "	" "		
6	Lewis Green	" "	" "		
7	Thomas Green	" "	" "		
8	S. E. A. Green	1874			
9	James Roberts				
10	J. B. Usry				
11	Pauline. Usry	1870			
12	Sally Jones	1866			
13	W. A. Evans				removed by letter Nov 18 1889
14	S. C. Evans				removed by letter Nov 18 1889
15	C. L. Forrist				
16	Bell Forrist				
17	E. L. Forrist				died 1892
18	M. A. Roberts				Joined the Baptist Sept 4 1887
19	J. S. Roberts				Transferred to Morrilton
20	P. H. Evans	1880	" Prof.	W. H. W. Burns	
21	John. Usry	" "	" "	" "	Dropped by order of Ch. Cn. 1888
22	G. A. Lewis	" "	" "	" "	removed by letter Mar 1889
23	M. F. Lewis	" "	" "	" "	
24	J. J. Mccullough	1881	" "	" "	Rem by letter .90
25	S. J. Mosley	" "	" "	at. M	
26	Loucinda Bennett	" "	" "	" "	
27	Louretta. Burns	" "	" "	" "	
28	Nancy Rogers	" "	" "	" "	Dyed in the

					year 1882
29	Nancy Mary Mccullough	" "	" "	" "	Rem by letter .90.
30	[M or Z]illen. Dozel	" "	" "	" "	Lettered Sept 2d 1887
31	Ella. Dozel	1882	By Prof.	Z. W. Lindsey	x
32	Mollie. Ford	" "	" "	" "	
33	Lillie. Ford	" "	" "	" "	
34	Rossy. Mccullough	" "	" "	" "	Lettered Nov 24 1888
35	Sarah A Evans	" "	" "	" "	Lettered Nov 24 1888
36	L. D. Sesson	1883	" "	W. R. Gardener	Rem by letter .90
37	Addie Sesson	" "	" "	" "	" " A.H.W.
38	Francis Tillett	" "	" Letter	" "	to Tenn.
39	Adolfias. D. Roberts	" "	" Prof.	" "	-
40	Mattie Roberts	" "	" "	" "	Died
41	Sarah Crow	" "	" "	" "	Married to Dozel see No. 117
42	A. N. Rogers	" "	" "	" "	Dropped by order of Ch. Cn. 1888
43	C. F. Vann	" "	" "	" "	Dropped by Church Cn'f Sept 1st 1887
44	Henry. Fletcher	x 1884	Transfer	J. W. Kaegler	" "
45	Harriett. Fletcher	x "	" "	" "	" "
46	Mary. E. Kaegler	" "	" "	" "	Lettered Jan 1889
47	Elizebeth. Finch	" "	" "	" "	Dropped by church conf. Sep 1st 1887
48	M. J. Brently [?]	x	" "	" "	" "
49	C. W. Dean	x	" "	" "	" "
50	Jane. Venable	" "	" "	" "	" "
51	S. C. Rogers	1885	" "	C. C. Graham	
52	W. D. Benson	" "	" "	" "	
53	R. N. Rogers	" "	" "	" "	Departed this life June 13th 1887.
54	S. E. Kaegler	Gay " "	" "	" "	Married to J. A. Gay 1888
55	James. Farrish	" "	" "	" "	Dyied 1887
56	Sarah. A. Farrish	" "	" "	" "	
57	C. F. Benson	" "	" "	" "	
58	M. M. Hargan	" "	" "	" "	Married



					Thompson
59	M. A. Burns	" "	" "	" "	Lost sight off
60	J. W. Kaegler	L. E.	" "	" "	Departed this life July 31 1887
61	Bill. Roberts	1885	By prof.	C. C. Graham	
62	Ann. Roberts	" "	" "	" "	Married Hogan 1891
63	Maggie. Forburn	" "	" "	" "	Kenady - -
64	Nicy. or Nicey. Gordon	" "	" "	" "	Dropped by church conf. Sept 2d 1887
65	Ed Osburn	" "	" "	" "	x [erasure]
66	Elmore. Osburn	" "	" "	" "	x [erasure]
67	John. Mason	" "	" "	" "	x [erasure]
68	J. D. Ransom	1886	" "	J. E. Sutton	x [erasure]
69	N. L. Ransom		" "	" "	
70	W. H. Hines		" "	" "	with drawn
71	W. W. Burns		" "	" "	Lettered April 15th 1887
72	M. E. Burns		" "	" "	
73	J. J. Barns		" "	" "	x
74	B. W. Dean	1884	" "	C. W. Kaigton	
75	James. Kemp	May 22 1887	" Prof.	H. A. Storey	Dropped by church conf. Sept 2d 1887
76	Mrs Elisabeth Kemp	" "	" "	" "	Rem to Plumerville
77	Tobtta. M. Maccallough	" "	" "	" "	
78	Lucy. J. Waile["n" or "r"]	" "	" "	" "	
79	Laura. L. Evans	Aug 21 1887	" Transfer	" "	removed by letter Nov 18 1889
80	John. T. Robenson	" "	" Prof.	" "	
81	Eleza. L. Crow	" "	" "	" "	Joined the Baptist
82	Emily. J. Crow	" "	" "	" "	" "
83	Maggie. M. Reyonalds	" "	" "	" "	removed by letter
84	Doree. B. Trober	Kemp" "	" "	" "	to Plumerville
85	Ida. A. Stowe	" "	" "	" "	Married See No. 119
86	James. M. Evans	" " 24th	" "	" "	[erasure]
87	Sarah F Evans		" "	" "	Died 1891
88	Merilda. J. Wilson	" " 25th	" "	" "	" 1891
89	Alona. M. Rhoads	" "	" "	" "	
90	Henry Conard	" " 27th	" "	" "	x
91	Newton. Youngblood	Aug 27th	By	H. A. Storey	

		1887	Profession		
92	May. or Mary. J. Robertson	" 28th "	" "	" "	
93	Louaner, Conard	" "	" "	" "	
94	Ida Cleveland	" "	" "	" "	
95	Aron. N. Burns	" "	" "	" "	x
96	Tinnie. Mccullough	" "	" "	" "	Lettered Nov 24th -- 1888
97	Thomas. B. Lawson	" "	" Letter	" "	Lettered Nov 10th 1887
98	Sarah. A. Lawson	" "	" "	" "	" "
99	Hew. C. Lawson	" "	" "	" "	" "
100	[G or Z]ellen. Lawson	" "	" "	" "	" "
101	Mollie. Pierce	" "	" Prof.	" "	
102	Mary. A. Crow	" "	" "	" "	
103	Lewis. S. Roach	" 30th	" "	" "	
104	Jullia. A. Roach	" "	" "	" "	
105	Wm. T. Mosley	" " m.	" "	" "	
106	Warren. Blacksheer	" 31	" "	" "	
107	Thomas. Burns	" "	" "	" "	
108	William. Waller	Sept 1st	" "	" "	
109	Thomas. Stillwell	" "	" "	" "	
110	Sintha. E. Watson	" "	" "	" "	
111	Christopher. C. Stone	" 3rd	" "	" "	Lettered Nov 10th 1887
112	Charles. Cleveland	" "	" "	" "	Dropped from ...
113	Mary. O. McClure	" "	" "	" "	Dropped by C.C.
114	Sarah. B. Coats	" "	" "	" "	To Baptist
115	Thomas. McClure	" "	Transfer	" "	Dropped
116	Steven. F. Roberts	" "	" "	" "	Dropt
117	Sarah. Dozeli	Aug 31st	See No 41	" "	Rem. by Death
118	Christine. C. Gordon	Jan 27th 1888	Cirtificate	P. P. Burke	
119	Ida Smith		See No 85		Lettered June 1889
120	Ella Gay	Feb 26th 1888	By Letter		Moved away
121	H. B. Gay	" "	" "		
122	Greer, A. [or H.] Virginia	July 27th 1888	By Babtism	P. P. Burk	
123	Bruntler. W. Henry	July 27th 1888	" Profession	P. P. Burk	Died Nov 11th 1888
124	Greer J Mary	Oct 28th 1888	" Babtism	" "	
125	Greer C. Almeta	Oct 28th 1888	" Babtism	P. P. Burk	
126	Roberson. T. Loulu	Oct 28th	" Babtism	P. P. Burk	

		1888			
127	Hardcastle. A. Nancy.	Oct 28th 1888	" Profession	P. P. Burk	
128	Wilson. Elizabeth.	Oct 28th 1888	" "	P. P. Burk	Rem by Death /89
129	Burnison, A. W. [or "N"]	Jan 6th 1889	" Letter	J. E. Dunaway	
130	Emiline Burnison. Elizabeth.	Jan 6th 1889	" Letter	J. E. Dunaway	
131	Mooseii Mrs. E. A.	Jan 6th 1889	" Letter	J. E. Dunaway	
132	Gay, L. E.		See No 54	J. E. Dunaway	
133	Annie Huddleston	Aug 24 1889	By Baptism		Died. 1890
134	C. B. Crow	Aug 90	By Letter	A. H. Williams	
135	Lila German	"	profession	"	
136	Mrs. Mattie Johnson	"	[Vows ?]	"	
137	Inez Johnson	"	profession	"	
138	Molie Cooper	"	"	"	
139	Mary Easley	"	"	"	Lettered 1892
140	W. H. Hines	"	renewed	"	
141	Effie Hines	"	"	"	
142	Ida Ransome		profession	"	
143	Claudie Ransome		"	"	
144	Clifford Naff		"	W. P. Whaley	
145	Mrs. M. L. Jones		Letter	"	

<sup>1</sup>I have interpreted and transcribed a handwritten list of names from a photocopy of the *Register of Members* of the United Methodist Church in Forrest City, Arkansas. The copy, which appears to cover from 1866 to 1892, was sent when information was requested for the time period beginning about 1850. There were some ink splotches on the five-page record; "r" and "n" were difficult to differentiate). The following information was typed on my query (dated 9 Mar 1986) but there was no signature: "Enclosed is a copy of the only records we have for that period."

<sup>2</sup> Entries from 1 to 117 appear to have been written by the same individual except for comments written in the last column (Date of Death or Disposal) here script differs from entry to entry. Handwriting varies in the remaining entries.



## More Old News

Submitted by Jan Hearn Davenport, 1  
Cinnamon Rd., North Little Rock, AR 72120

Log Cabin Democrat, Conway, Arkansas  
June 11, 1951

Russellville, June 13-

A 103 year old veteran of the war between the states- John G. Chisum- is dead, leaving only one ex-Confederate soldier in Arkansas. Chisum died at his home in Camp Victor, a Pope county community near Russellville, Monday night. His death cut to 11 the surviving confederate veterans. One, W. M. Loudermilk of Jonesboro, lives in Arkansas. Chisum served in Jackson county near Newport during the war. Born in Izard county, he spent the latter part of his life around Ben Hur, near the Pope-Newton county line. Survivors include his widow, the former Sally Goswick, three sons and four daughters. Funeral services will be Thursday at Boyd Cemetery north of Hector.

*Fort Smith Elevator*,  
Fort Smith, Arkansas April 9, 1886

### A Muchly Married Man

It will be remembered that a few weeks ago a man calling himself Dr. W. H. Boyd dropped in here, remained a few days, borrowed a horse from the proprietor of the El Paso wagon yard, L. Boyd, and absconded with the animal, disposing of it in Hot Springs. He was arrested shortly afterwards at Camden for stealing a horse and is still in jail at that place. He is wanted in several localities in this state and in Texas, for horse stealing, and according to a written confession made by himself is quite a large sized bigamist.

The following is a list of his wives and the dates of marriage.

- No. 1. Mary J. Hunter, Staunton, Va.; May 6, 1863.
- No. 2. Hannah J. McGowna, Arapahoe, Neb.; April 21, 1874.
- No. 3. Melvina Hawk, Tuscumbia, Mo.; Nov. 20, 1877.
- No. 4. Mariah Tryon, Huntsville, Ark.; Oct. 19, 1878.
- No. 5. Mary J. Pack, Danville, Ark.; April 20, 1879.
- No. 6. Mary F. Gage, Boydsville, Ark.; August 18, 1882.
- No. 7. Lydia A. Bird, Wittsburgh, Ark.; May 19, 1882.
- No. 8. Lenny Knowles, Salem, Ark. July 10, 1883
- No. 9. Margaret Dennis, Lamartine; November 1883
- No. 10. Emma Stark (Indian) Choctaw Nation; April 7, 1884
- No. 11. Josephine M. Eales(?), Clarkeville, Tex.; July 22, 1885

### SLEEPING BRAVES

From the *Van Buren Press*, Van Buren,  
Crawford County, Arkansas  
June 7, 1879

Submitted by Fran Alverson Warren to the  
AGS List. Email: [alverson@valuelinx.net](mailto:alverson@valuelinx.net)

### Sleeping Braves

A Kindly Act by Living Indians Toward  
Their Dead

While our own race were paying the tender tributes justly due to the memory of our illustrious and gallant dead, the Indian delegation now in this city, W. P. Adair, and D. H. Ross, of the Cherokees; George W. Stidham, of the Creeks, and P. P. Pitchlynn, of the Choctaws, visited the congressional burying grounds and decorated the graves of some of their departed friends.

There are interred in those grounds, the remains of the following named illustrious Indians, Push-ma-ta-ha, chief of the Choctaws; Capt. John Rogers; chief of the "Old Settler" Cherokees; John Looney,

Cherokee chief and delegate; Wm. S Coody, Buford West, Ezekiel Starr, Capt. Thomas Pegg, Capt. James McDaniel and Judge Richard Fields, Cherokee delegates, and Daniel B. Asberry, Creek delegate.

Push-ma-ta-ha was a celebrated war chief of the Choctaws. He was also a brigadier general of volunteers, under General Jackson, in the Creek War, and was a great favorite of Jackson. On his death bed in this city, Jackson visited him, and the old chief said: "My friend, we have been good friends. You have been kind to my people; we must soon part; I am going home to my fathers in the spirit land. My death will be heard by my people like the fall of a great tree in the forest. When I am gone let the big guns be fired over me."

His wish was complied with, and in addition to the salute fired over his grave, the tombstone was inscribed: "When I am gone let the big guns be fired over me".

Capt. John Rogers was a chief of the "Old Settler", a western Cherokee, and was one of the first Cherokees who removed west of the Mississippi, and was a friend of President Jackson, and served under him during the Creek War. He died in 1846, while the Cherokee treaty was pending. John Looney, chief of the "Western Cherokees", was also one of the first of the Cherokees that removed West, and was celebrated as a great warrior, in protecting the Western border from the assaults of the wild Indians of the plains and mountains.

W. S. Coody, who died in 1848, was in public life of the Cherokee, from his early growth. His father was a white man, and his mother a sister of the celebrated Cherokee chief, John Ross, who died in 1856. He was also a brother in law to General D. H. Rucker, who married his sister in the Indian Country. He was one of the most eloquent men of his day, and was gifted with rare conversation powers. He drafted the Cherokee constitution, the acts of union of 1839, and most of the civil and criminal code of the Nation in existence up to the time of his death.

Bluford West was a delegate of the "Old Settler" Cherokees, and Ezekiel Starr, of the

"Treaty Party" Cherokees. They were both intelligent gentlemen, and their fathers were white men.

Capt. Thomas Peggs and James M. Daniel were full blooded Cherokees, and died in this city, the former in 1866, and the latter in the year following. Both were captains in the United States army, during the late rebellion, and served with marked distinction.

Judge Richard Fields was a delegate, and died here in 1874. He served under General Jackson in the Creek War, and also rendered the United States efficient service in the Seminole War. During the late war, he was in the Confederate army. General Lacket, of the United States army, was his son in law, having married his daughter Amanda in the Indian Country.

Daniel B. Asberry was a Creek delegate and died in this city in 1855. He was a full blooded Indian of excellent education and was a fine orator. He was educated in Kentucky, and was second chief of the Creek Nation when he died. [Washington Post].



## Newspaper Clippings

Calhoun County, Arkansas

Submitted by Jann Woodard, 12008 Ginger Lane, Benton, AR 72015

Arkansas Gazette Oct. 17, 1909: Hampton, Oct. 16 –

The cornerstone of the old county court house was removed today. The building was erected in 1859 and was a fine court building in its day. It is a landmark and many interesting reminiscences linger around the old structure. Meetings were held in it during the Civil War, and many a youth heard the drum beat calling him to duty as he marched away to fight for the Confederacy.

Some of Arkansas' leading lawyers practiced here, among them Judge Jno. M. Bradley, Judge Bunn, Judge Henry P. Smoot, Col. Hamp P. Smead and Judge Benjamin F. Askew, all leaders in their day, Judge Bunn being later chief justice.

Many of the leading legal lights of the present bar of Arkansas and the South began their first practice here. Among those that may be mentioned are Co. T. E. Webber of Texarkana and Co. J. R. Thornton and H. S. Powell of Camden.

The corner stone contained many things of interest. Among them were three quarter dollars of '53, '56, and '59, respectively; dimes of '08, '29, '27, '56, '57, '53, '41; half dimes of '50, '56, '42, '57, '58, '54, '41 and '23. The last half dime contained the initials of Col. N. M. Hunt, the founder of Hampton, who settled the place in 1832 before the state came into the Union. All the coins will be preserved and placed in the cornerstone of the new building which is being erected. Col. C. L. Poole, court house commissioner, and E. L. Koonce, contractor, are planning to have all the old soldiers present when the

new cornerstone is placed in position, the ceremony to be done by the Masonic fraternity.

### Birth & Death Announcements

Arkansas Gazette April 10, 1915:

C. C. Childs, at Lanark  
Mrs. Mellie Box, at Rector  
Dallas Levett, at Harrison  
T. C. Buchanon, at Blackland  
Mrs. Sarah Phillips, at Jasper  
James W. Brown, at Middlebrook  
L. H. Fowler, near Western Grove  
T. W. Harrell, near Summers  
W. H. Boles, near Mammoth Spring  
J. Frachiseur, at Mineral  
Mrs. Mollie McCarty, near Holland  
Mrs. Jane E. Wiley, near Conway

### Marriages:

Charles Bell of Hill Top and Miss Birdie Watkins of Harrison, at Harrison.  
Frank Martin and Miss Gertie Engle, at Pea Ridge.  
John Turney and Miss Myrtle Rayon, at Glade.  
A. H. Sharp of Sulphur Springs and Miss Rose Hance of Toga, Mo., at Toga.  
A. L. Allen of Rogers and Miss Virginia McCulloch of Pettigrew, at Pettigrew.  
Jeff Kelley and Miss Maudie Rounds, at Rogers.  
Brice Leslie of Kaufman and Miss Maxine Elliott Blythe of White, at White.



## Tolson Family Bible

In possession of Ara Monee Burford Yanker,  
14108 Willow Beach Road, North Little  
Rock, AR 72117.

Transcribed October 23, 2001, by Lynda  
Childers Suffridge

Superfine Edition. *New Devotional and Explanatory Pictorial Family Bible, containing the Old and New Testaments, Apocrypha, Concordance, and Psalms in Metre, translated out of the original tongues, with all former translations diligently compared and revised. . . . together with Dr. William Smith's Dictionary of the Bible . . .* published by The National Publishing Co., Philadelphia, Pa.; Chicago, Ill; St. Louis, Mo., and Atlanta, Ga. [Entered according to Act of Congress, in the year 1879, by J. R. Jones, in the Office of the Librarian of Congress at Washington]

1<sup>st</sup> page of Family Pages:

This Certifies that the Rite of Holy Matrimony was celebrated between *G. L. Tolson of Bradley Co. Arkansas* and *L. A. Biggers of Bradley Co. Ark* on February 24 1861 at *New Hope P. B. Church* by *Elder Thomas Gibson, Pastor*

2<sup>nd</sup> page of Family Pages:

### MARRIAGES

J. B. Tolson was married March 2 1892  
*Luvenia A. Tolson* was married March 15. 1890  
*Martha E Tolson* was married Sept 1893  
*Anna Z Tolson* was married Dec 22 1897  
*Effy C Tolson* was married Dec 15 1897  
*Lucy Griselda Tolson* was married

### BIRTHS

*Geo. L. Tolson* was born Feb the 17<sup>th</sup> 1838  
*Louisa A. Tolson* was born Feb. the 15<sup>th</sup> 1847  
*Son's and Daughters*  
*Mary E. Tolson* was born July the 21<sup>st</sup> 1865  
*Suffrona E. Tolson* was born Jan the 9<sup>th</sup> 1868  
*John B. Tolson* was born Feb the 13<sup>th</sup> 1870  
*Lavinia A. Tolson* was born Feb the 2<sup>nd</sup> 1872  
*Geo. H. Tolson* was born Aug the 10<sup>th</sup> 1874  
*Martha E. Tolson* was born Dec the 9<sup>th</sup> 1876  
*Anna Z Tolson* was born Jan the 29<sup>th</sup> 1879  
*Effy C. Tolson* born Jan the 31<sup>st</sup> 1882  
*Minnie Pearl Tolson* born July 19<sup>th</sup> 1884  
*Louisa Issabella Tolson* born Nov 20<sup>th</sup> 1886  
*Lucy Griselda Tolson* Born Oct 18 1888  
*Lenora May Tolson* was born Feb 8<sup>th</sup> 1890

### DEATHS

*Mary E. Tolson* died Oct the 4<sup>th</sup> 1869  
*Suffrona E. Tolson* died Aug the 19<sup>th</sup> 1876  
*Geo. H. Tolson* Died Aug the 17<sup>th</sup> 1875  
*Minnie Pearl Tolson* died Oct the 24<sup>th</sup> 1884  
*Lucy Giselda Tolson* died Nov 3<sup>rd</sup> 1888  
*Louisia A. Tolson* died Oct the 27<sup>th</sup> 1900  
*George L. Tolson* died May 22 1904  
*Addie Wright Daughter of G. L. Tolson*  
Died April 25 1916



## SPARKMAN CEMETERY - DALLAS COUNTY- ARKANSAS

Submitted by Ed Sanders, 10 Choctaw Dr., Searcy, AR 72143. dated 6 June 1996 and containing 302 records.

Name	DOB	DOD	Cemetery	County, ST & Notes
Mabel Hays ADAIR	14 Jun 1900	19 Jul 1949	Sparkman	Dallas AR
Alma Duncan ANDERSON	18 Aug 1892	11 May 1965	Sparkman	Dallas AR
John Thomas ANDERSON	14 Jun 1876	11 Jan 1937	Sparkman	Dallas AR
Charles E. BELL	05 Sep 1917	24 Aug 1965	Sparkman	Dallas AR
Louella McMullens BELL	10 Mar 1920	24 Aug 1965	Sparkman	Dallas AR
Maude Culbreath BELL	1887	1949	Sparkman	Dallas AR
Paul A. BELL	15 Nov 1885	28 Dec 1961	Sparkman	Dallas AR
Thomas H. Sr Rev BERRY	20 Jun 1883	30 Jul 1957	Sparkman	Dallas AR
Clarence G. BETHEA	11 Feb 1899	25 Apr 1928	Sparkman	Dallas AR
Lawrence L. BETTIS	11 May 1888	11 Mar 1961	Sparkman	Dallas AR
Lillie Lee BLAKELEY	13 Nov 1865	23 Sep 1943	Sparkman	Dallas AR
Sarah Avant BLAKELY	02 Jan 1879	04 Sep 1923	Sparkman	Dallas AR
w/William Robert BLAKELY William Robert BLAKELY	28 Sep 1866	01 Apr 1937	Sparkman	Dallas AR
W/Sarah Avant BLAKELY Newt K. BLEDSOE	28 May 1894	21 Jan 1957	Sparkman	Dallas AR
looks like BLHOWIE (!)	25 Jun 1895	09 Nov 1935	Sparkman	Dallas AR
Ebb C. BOEN	14 May 1889	28 Dec 1941	Sparkman	Dallas AR
Mahalie Seale BOEN	17 Dec 1890	04 Oct 1962	Sparkman	Dallas AR
J. Ernest BRENT	03 Mar 1877	10 May 1963	Sparkman	Dallas AR
James E. BREWER	09 Sep 1886	03 Apr 1939	Sparkman	Dallas AR
Claude L. BROWN	23 Oct 1869	31 Mar 1938	Sparkman	Dallas AR
Lemuel J. BROWN	1879	1941	Sparkman	Dallas AR
Mary A. BROWN	1884	1960	Sparkman	Dallas AR
Zula Velma BROWN	05 Sep 1899	11 Oct 1918	Sparkman	Dallas AR
Mary DeLaughter Williams BRYANT	20 Dec 1840	13 Jul 1924	Sparkman	Dallas AR
m/o Willie C. WILLIAMS John W. Jr CALLAWAY	31 Mar 1932	15 Mar 1934	Sparkman	Dallas AR
Marie Scott CALLAWAY	10 Nov 1910	01 Feb 1965	Sparkman	Dallas AR
Carl V. CAPLE	23 Oct 1880	15 Sep 1961	Sparkman	Dallas AR
John Thomas CARTER	04 Sep 1926	23 Nov 1932	Sparkman	Dallas AR



W. C. CARTER	1872	1957	Sparkman	Dallas	AR
William Walter					
CARTER	04 Apr 1872	18 Feb 1945	Sparkman	Dallas	AR
Alice Bandy CHITTUM	1841	1929	Sparkman	Dallas	AR
Dorothy Mae CHITTUM	19 Oct 1934	09 Dec 1950	Sparkman	Dallas	AR
Henry J. CHITTUM	1843	1922	Sparkman	Dallas	AR
James E. CHITTUM	06 Nov 1924	27 Aug 1946	Sparkman	Dallas	AR
Nathan M. CHITTUM	1875	1954	Sparkman	Dallas	AR
Aubrey CLAWSON	06 Nov 1914	02 Jan 1926	Sparkman	Dallas	AR
Jack CLAWSON	16 May 1931	26 Apr 1932	Sparkman	Dallas	AR
Sam CLAWSON	08 May 1887	13 Jul 1958	Sparkman	Dallas	AR
William T. CLAY	24 Dec 1924	18 Jul 1949	Sparkman	Dallas	AR
John B. COLE	09 Sep 1878	15 May 1966	Sparkman	Dallas	AR
h/o Lillie Creech COLE?					
Lillie Creech COLE	23 Jan 1887	24 Feb 1944	Sparkman	Dallas	AR
w/o John B. COLE?					
Walter S. COOPER	31 May 1892	28 Dec 1949	Sparkman	Dallas	AR
E. A. CROSSLEY	06 Dec 1879	12 Jun 1919	Sparkman	Dallas	AR
w/o J. E. CROSSLEY					
Etta E. CROSSLEY	25 Mar 1876	27 Jun 1956	Sparkman	Dallas	AR
J. W. Sr CROSSLEY	26 Aug 1870	12 Mar 1938	Sparkman	Dallas	AR
Joseph E. CROSSLEY	25 Nov 1879	07 Sep 1945	Sparkman	Dallas	AR
h/o E. A. CROSSLEY					
Joseph H. CROSSLEY	06 Dec 1910	23 Sep 1929	Sparkman	Dallas	AR
Joseph Dean CROUSE	02 Jan 1897	24 Jan 1960	Sparkman	Dallas	AR
Twin sons DAILY	10 Jul 1962	10 Jul 1962	Sparkman	Dallas	AR
sons/o Herbert & Betty DAILY					
Morris E. DANIEL	05 Apr 1912	24 Feb 1966	Sparkman	Dallas	AR
William Hugh DANIEL	04 Mar 1881	06 Feb 1954	Sparkman	Dallas	AR
Ralph DANIELL	- Sep 1925	-- Jul 1950	Sparkman	Dallas	AR
Charley DARBY	13 Jul 1877	30 Nov 1956	Sparkman	Dallas	AR
Katherine DARBY	25 Aug 1879	12 Aug 1956	Sparkman	Dallas	AR
Edward DEATON	22 Apr 1869	06 Jun 1944	Sparkman	Dallas	AR
Kenneth Roy DEATON	21 Jan 1949	04 Feb 1965	Sparkman	Dallas	AR
Louisa DEATON	30 Dec 1876	30 Mar 1945	Sparkman	Dallas	AR
Benjamin DeLAUGHTER					
	04 Oct 1844	08 Apr 1918	Sparkman	Dallas	AR
w/Eliza & Mannie DeLAUGHTER					
Eliza King					
DeLAUGHTER	09 Feb 1846	27 Jan 1896	Sparkman	Dallas	AR
w/o Vinnie & Benjamin DeLAUGHTER					
Ethel Hayes					
DeLAUGHTER	13 Dec 1882	16 May 1921	Sparkman	Dallas	AR
George W. Sr					
DeLAUGHTER	11 Jul 1882	09 Sep 1941	Sparkman	Dallas	AR
John T.					
DeLAUGHTER	05 Nov 1871	25 Jun 1927	Sparkman	Dallas	AR
Mannie DeLAUGHTER	02 Nov 1862	09 Dec 1897	Sparkman	Dallas	AR
w/ Eliza & Ben DeLAUGHTER					
Vinnie B.					
DeLAUGHTER	10 Oct 1888	29 Jun 1901	Sparkman	Dallas	AR

w/Eliza & Benjamin DeLAUGHTER						
W. Brack						
DeLAUGHTER	25 Nov 1877	11 Feb 1905	Sparkman	Dallas	AR	
beside Maude D. DeLaughter Porter						
Joe Elmer DICKEY	no date 1906	02 Jul 1963	Sparkman	Dallas	AR	
Gillie DRUMMOND	18 Feb 1877	23 Jul 1949	Sparkman	Dallas	AR	
J. Harvey DRUMMOND	02 Sep 1881	18 Dec 1923	Sparkman	Dallas	AR	
C. Claude DUNLAP	06 Feb 1885	03 Aug 1964	Sparkman	Dallas	AR	
Ira "Red" ELDER	01 Mar 1901	02 Mar 1959	Sparkman	Dallas	AR	
Emma S.(eale)						
EVERETT	17 Jul 1882	11 Oct 1921	Sparkman	Dallas	AR	
William W.(iseman)						
EVERETT	26 Nov 1875	21 May 1962	Sparkman	Dallas	AR	
f/o Wm Kenneth, Camden AR						
Agnes Daniell EZELL	01 Jan 1895	29 Nov 1953	Sparkman	Dallas	AR	
Carolyn June EZELL	01 Jun 1940	09 Mar 1959	Sparkman	Dallas	AR	
Paula Kay EZELL	01 Dec 1961	01 Dec 1961	Sparkman	Dallas	AR	
infant d/o M/M Harold EZELL						
Sid EZELL	18 Feb 1895	24 Mar 1943	Sparkman	Dallas	AR	
Albert W. FITE	1860	1935	Sparkman	Dallas	AR	
Mattie E. FITE	1859	1935	Sparkman	Dallas	AR	
Ben F. FORTNER	15 Mar 1872	07 Dec 1960	Sparkman	Dallas	AR	
Helen FREEMAN	22 Aug 1929	11 Jan 1932	Sparkman	Dallas	AR	
Annie Lou GARNER	08 Jan 1914	16 Oct 1918	Sparkman	Dallas	AR	
John Thomas GARNER	1888	1965	Sparkman	Dallas	AR	
h/o Laura B. THOMAS?						
Laura B. GARNER	1892	1955	Sparkman	Dallas	AR	
w/o John Thomas GARNER?						
Ollie D. GARRETT	1876	1942	Sparkman	Dallas	AR	
Rose E. GARRETT	1879	1926	Sparkman	Dallas	AR	
Eura Smith GASTON	19 Oct 1883	02 Jun 1949	Sparkman	Dallas	AR	
w/o Sim T. GASTON						
Felix Andrew Sr						
GASTON	30 Jan 1889	26 Jun 1963	Sparkman	Dallas	AR	
James Richard						
GASTON	no date 1886	02 Feb 1968	Sparkman	Dallas	AR	
John GASTON	25 Nov 1880	28 Apr 1956	Sparkman	Dallas	AR	
Lucy GASTON	13 Jan 1885	21 Apr 1962	Sparkman	Dallas	AR	
Lucy Manning						
GASTON	17 Jul 1897	16 Jun 1967	Sparkman	Dallas	AR	
Sim(eon) T.(urner)						
GASTON	01 Mar 1883	11 Mar 1957	Sparkman	Dallas	AR	
h/o Eura Smith GASTON						
Henry E. GIVENS	1855	1933	Sparkman	Dallas	AR	
h/o Letitia S. GIVENS?						
Letitia? S. GIVENS	1861	1939	Sparkman	Dallas	AR	
w/o Henry E. GIVENS?						
Ernestine Harris						
GOZA	07 Nov 1920	04 Jan 1959	Sparkman	Dallas	AR	
Ernest W. GRACE	1917	1940	Sparkman	Dallas	AR	
Infant GRACE	1939	1939	Sparkman	Dallas	AR	

Eudris Fay GREEN	25 Apr 1930	09 Dec 1932	Sparkman	Dallas	AR
Myrtalee GREEN	31 Aug 1938	19 Dec 1940	Sparkman	Dallas	AR
Coleman B. HALL	17 Sep 1893	07 Jun 1958	Sparkman	Dallas	AR
Leslie E. HALL	1896	1934	Sparkman	Dallas	AR
William Robert HAMILTON	02 Oct 1934	08 Oct 1934	Sparkman	Dallas	AR
Zelma Teddye HAMILTON	1906	1966	Sparkman	Dallas	AR
Allen J. HAMM	21 Oct 1874	15 Jun 1947	Sparkman	Dallas	AR
Arch HAMM	01 Aug 1897	17 Mar 1951	Sparkman	Dallas	AR
Bessie HAMM	1913	1920	Sparkman	Dallas	AR
Lucy HAMM	1919	1919	Sparkman	Dallas	AR
Mamie S. HAMM	02 Jun 1875	08 May 1963	Sparkman	Dallas	AR
Hattie HARRIS	16 Nov 1884	20 Dec 1962	Sparkman	Dallas	AR
Leon HARRIS	22 Nov 1879	28 Jan 1956	Sparkman	Dallas	AR
Fletcher HARRISON	27 Apr 1852	18 Oct 1932	Sparkman	Dallas	AR
Olive E. HARRISON	23 Aug 1902	11 Dec 1925	Sparkman	Dallas	AR
Gene A. HATHCOAT	23 Jun 1935	14 Apr 1958	Sparkman	Dallas	AR
Charles Everett Jr HAYS	07 Sep 1895	18 Feb 1967	Sparkman	Dallas	AR
Charles Everett Sr HAYS	12 May 1868	07 Jul 1934	Sparkman	Dallas	AR
Charlie August HENDEE	16 Aug 1876	01 May 1943	Sparkman	Dallas	AR
Mary HENDEE	15 Sep 1886	03 Jan 1951	Sparkman	Dallas	AR
Ewing A. HENSLEY	21 Jul 1894	28 Feb 1938	Sparkman	Dallas	AR
George M. HENSLEY	15 Feb 1872	14 Jul 1928	Sparkman	Dallas	AR
h/o Henrietta HENSLEY?					
Henrietta HENSLEY	1874	1951	Sparkman	Dallas	AR
w/o George M. HENSLEY?					
John Henry HERRING	31 Dec 1913	24 Jun 1967	Sparkman	Dallas	AR
Emma L. HICKMAN	1897	1958	Sparkman	Dallas	AR
Mary HICKMAN	29 Oct 1885	24 Feb 1954	Sparkman	Dallas	AR
Clarence HOFFMAN	22 Jun 1890	14 Sep 1953	Sparkman	Dallas	AR
Minnie Hurst HOFFMAN	28 Jun 1891	29 May 1963	Sparkman	Dallas	AR
Connie Mae HOGUE	21 Sep 1905	21 May 1964	Sparkman	Dallas	AR
John Solomon HOGUE	08 Dec 1899	18 Feb 1963	Sparkman	Dallas	AR
Mary Susan HOGUE	1906	1960	Sparkman	Dallas	AR
William Deward HOGUE	01 Aug 1928	25 Jun 1958	Sparkman	Dallas	AR
John P. HOLLOWAY	28 Nov 1879	21 Dec 1955	Sparkman	Dallas	AR
Roland R. HOLLOWAY	08 Dec 1914	14 Dec 1960	Sparkman	Dallas	AR
Rosa I. HOLLOWAY	16 Jan 1882	07 May 1964	Sparkman	Dallas	AR
Julie E. HOOD	03 Apr 1877	05 Aug 1961	Sparkman	Dallas	AR
Samuel S. HOOD	06 Jan 1873	14 Jun 1954	Sparkman	Dallas	AR
Lela HOPSON	18 Sep 1881	19 Sep 1949	Sparkman	Dallas	AR
Baby of S. B. & S L. HORNE	25 Sep 1896	25 Sep 1896	Sparkman	Dallas	AR
Edward B. HORNE	29 Aug 1912	27 Dec 1962	Sparkman	Dallas	AR

O. D. Jr HORNE	28 Jul 1921	07 May 1962	Sparkman	Dallas	AR
Otis Dale HORNE	09 Feb 1900	17 Jan 1960	Sparkman	Dallas	AR
Richard B. HORNE	29 Aug 1912	27 Dec 1962	Sparkman	Dallas	AR
between Emma Everett & Robt. Smith					
Sallie L. HORNE	1874	1937	Sparkman	Dallas	AR
Samuel B. HORNE	1874	1957	Sparkman	Dallas	AR
Horace S. HORTON	27 Apr 1895	04 Sep 1936	Sparkman	Dallas	AR
Infant twin sons					
HORTON	-- Feb 1919	-- Feb 1919	Sparkman	Dallas	AR
sons/o Horace & Olive King HORTON					
Louis Lane					
JACKS	30 Dec 1887	23 Oct 1966	Sparkman	Dallas	AR
Robert L. JOHNSON	05 Oct 1893	25 May 1961	Sparkman	Dallas	AR
Ada J. JONES	21 Dec 1881	02 Apr 1963	Sparkman	Dallas	AR
w/o Jackson A. JONES?					
Andrew W. JONES	1908	1961	Sparkman	Dallas	AR
Daniel C. JONES	26 Jun 1930	26 Jun 1930	Sparkman	Dallas	AR
Elijah B. JONES	14 Apr 1921	16 Aug 1933	Sparkman	Dallas	AR
Jackson A. JONES	08 Jan 1879	01 Sep 1951	Sparkman	Dallas	AR
h/o Ada J. JONES?					
John W. JONES	1870	1941	Sparkman	Dallas	AR
Leila S. JOYNER	09 Oct 1859	05 Feb 1923	Sparkman	Dallas	AR
Rosa Marie Chittum					
KELLY	1898	1954	Sparkman	Dallas	AR
Infant daughter KEY	-- Aug 1965	-- Aug 1965	Sparkman	Dallas	AR
d/o M/M Rufus KEY					
John Wayborn KEY	25 Oct 1902	27 Mar 1949	Sparkman	Dallas	AR
James (Infant)					
KIMBROUGH	1908	1908	Sparkman	Dallas	AR
Fannie L. Nix KING	14 Apr 1876	05 Oct 1940	Sparkman	Dallas	AR
Fred KING	16 Nov 1892	23 Jul 1952	Sparkman	Dallas	AR
George W., Jr KING	25 Jan 1925	-- Mar 1945	Sparkman	Dallas	AR
George Walter KING	09 Oct 1872	27 Sep 1939	Sparkman	Dallas	AR
James Edward KING	18 Dec 1872	12 May 1947	Sparkman	Dallas	AR
Lorena P. Gill KING	16 Apr 1876	12 Feb 1924	Sparkman	Dallas	AR
Nancy KITCHEN	31 Oct 1889	28 Jan 1963	Sparkman	Dallas	AR
Tom KITCHEN	19 Dec 1874	23 Feb 1959	Sparkman	Dallas	AR
Hershal KNIGHT	05 Dec 1902	07 Apr 1923	Sparkman	Dallas	AR
Mary Kate KNIGHT	17 Feb 1867	14 Jan 1952	Sparkman	Dallas	AR
W. A. KNIGHT	07 Dec 1860	21 Jun 1927	Sparkman	Dallas	AR
R. H. 'Judge' LAND	10 Oct 1871	01 Mar 1960	Sparkman	Dallas	AR
Wesley S. LAUNIUS	03 May 1895	25 May 1954	Sparkman	Dallas	AR
Ruby C. LAWS	07 Nov 1928	14 Jun 1946	Sparkman	Dallas	AR
Cora Mae LEA	1916	1935	Sparkman	Dallas	AR
Edd LEA	18 Nov 1886	11 Jan 1933	Sparkman	Dallas	AR
h/o Lillian K. LEA?					
Lillian K. LEA	26 Apr 1891	13 Mar 1954	Sparkman	Dallas	AR
w/o Edd LEA?					
Lummie E. LEA	06 Oct 1865	01 Oct 1960	Sparkman	Dallas	AR
Mable E. LEA	04 Feb 1894	25 Aug 1943	Sparkman	Dallas	AR
Nora Myrtle LEA	1923	1924	Sparkman	Dallas	AR

Roy Wayne LEA		1938		1938	Sparkman	Dallas	AR
William P. LEA	21 Jun	1885	29 Mar	1965	Sparkman	Dallas	AR
Willmer LEA	07 Dec	1918	22 Jan	1947	Sparkman	Dallas	AR
Erbele LEAMONS		1919		1967	Sparkman	Dallas	AR
Jesse A. LEAMONS		1887		1954	Sparkman	Dallas	AR
Robert Norman LEAMONS	14 Sep	1923	03 Mar	1960	Sparkman	Dallas	AR
Scott LEAMONS		1885		1959	Sparkman	Dallas	AR
Armelia LEONARD		1881		1953	Sparkman	Dallas	AR
Manervia Ann LEONARD	21 Feb	1945	30 Jul	1965	Sparkman	Dallas	AR
Jessie N. LEWIS	no date	no yr	18 Jan	1968	Sparkman	Dallas	AR
Jewell A. LEWIS		1890		1942	Sparkman	Dallas	AR
Alexander M., MD LIZENBEE	16 Jun	1886	11 Nov	1948	Sparkman	Dallas	AR
Arch MANN	08 Apr	1878	20 Oct	1966	Sparkman	Dallas	AR
Karen Elaine McARTY	07 Jan	1949	08 Jan	1949	Sparkman	Dallas	AR
George W. McCANN		1881		1958	Sparkman	Dallas	AR
Harriett E. McCANN		1881		1959	Sparkman	Dallas	AR
Thomas B. McCANN		1909		1941	Sparkman	Dallas	AR
Etta W. MIZELL	03 Aug	1906	29 Nov	1960	Sparkman	Dallas	AR
John T. MOORE	no date	no yr	20 Oct	1918	Sparkman	Dallas	AR
U.S. Army Carrie Myrle Knight MORGAN		1914		1949	Sparkman	Dallas	AR
Annie L. (Gordon) MORRIS		1899		1950	Sparkman	Dallas	AR
J. W. Jr MORRIS	26 Apr	1924	25 Dec	1929	Sparkman	Dallas	AR
James W. MORRIS	18 Aug	1919	05 Mar	1936	Sparkman	Dallas	AR
s/o Robert O. & Nellie MORRIS Jesse W. (illiam) MORRIS		1892		1945	Sparkman	Dallas	AR
John R. MORRIS	06 Nov	1869	16 Oct	1949	Sparkman	Dallas	AR
s/o S. Turner & Rebecca P. MORRIS Juanita MORRIS	19 Feb	1920	17 Dec	1920	Sparkman	Dallas	AR
d/o Rufus & Nettie MORRIS Lois Louise MORRIS	20 Oct	1926	04 Nov	1926	Sparkman	Dallas	AR
Nettie J. (Canady) MORRIS	01 Dec	1884	13 Mar	1947	Sparkman	Dallas	AR
w/o Rufus MORRIS Fannie NALL	03 Oct	1876	11 Aug	1965	Sparkman	Dallas	AR
Henry Orren NALL	16 Dec	1869	21 Aug	1921	Sparkman	Dallas	AR
Alvie Mae NALLS	25 Jan	1913	15 Jul	1961	Sparkman	Dallas	AR
Riley NIX	17 Jul	1875	14 Jan	1948	Sparkman	Dallas	AR
Roland NIX	no date		26 May	1965	Sparkman	Dallas	AR
Nuton PATTERSON	14 Aug	1907	09 Feb	1923	Sparkman	Dallas	AR
Lola Mae Bozeman PITTMAN	04 Nov	1888	25 Oct	1938	Sparkman	Dallas	AR
Clifton W. POINTS	28 Jun	1935	01 Jan	1955	Sparkman	Dallas	AR
John N. POINTS	15 Mar	1850	18 Feb	1933	Sparkman	Dallas	AR
Maland A. POINTS	01 Apr	1866	03 May	1927	Sparkman	Dallas	AR
MaudeDeLamar DeLaughter PORTER	10 Aug	1879	04 Jan	1961	Sparkman	Dallas	AR

w/Tom L. PORTER						
Tom L. PORTER	03 Nov 1883	25 Sep 1950	Sparkman	Dallas	AR	
w/Maude PORTER						
Arnton P. POSEY	12 Jan 1874	17 Dec 1952	Sparkman	Dallas	AR	
Emile S. PUCHEE	26 Mar 1895	28 Nov 1955	Sparkman	Dallas	AR	
Betty Clay PURTLE	1928	1965	Sparkman	Dallas	AR	
Augustus B. RAMBO	1882	1954	Sparkman	Dallas	AR	
Allen G. ROBERTS	16 Jul 1886	26 Mar 1952	Sparkman	Dallas	AR	
Andrew ROBERTS	31 Mar 1894	28 Aug 1959	Sparkman	Dallas	AR	
Blanch L. ROBERTS	29 Mar 1879	17 Apr 1924	Sparkman	Dallas	AR	
Charles Rupert ROBERTS	02 Feb 1896	28 Jul 1965	Sparkman	Dallas	AR	
Gertrude F. ROBERTS	03 May 1902	25 Feb 1931	Sparkman	Dallas	AR	
Jimmie ROBERTS	24 Aug 1913	06 Jun 1943	Sparkman	Dallas	AR	
Noah A. ROBERTS	15 Jan 1872	04 Jun 1956	Sparkman	Dallas	AR	
Eber ROEBUCK	12 Jan 1894	26 Jul 1939	Sparkman	Dallas	AR	
Eva ROEBUCK	03 Aug 1882	09 Aug 1960	Sparkman	Dallas	AR	
Luther ROEBUCK	28 Nov 1848	21 Mar 1944	Sparkman	Dallas	AR	
Ben ROSS	03 May 1891	25 Apr 1964	Sparkman	Dallas	AR	
Drew H. ROSS	04 Nov 1892	24 Oct 1951	Sparkman	Dallas	AR	
James ROSS	08 Oct 1918	06 Jun 1958	Sparkman	Dallas	AR	
Lois 'Tony' ROSS	04 Dec 1921	14 May 1967	Sparkman	Dallas	AR	
Made L. ROSS	1891	1959	Sparkman	Dallas	AR	
Clara Ann RUCKER	25 Oct 1881	25 Oct 1956	Sparkman	Dallas	AR	
w/o William RUCKER						
Lee RUCKER	04 Jul 1888	01 Sep 1948	Sparkman	Dallas	AR	
f/o Alphas & Dobie RUCKER						
Travis RUCKER	24 Mar 1918	17 Apr 1918	Sparkman	Dallas	AR	
s/o Isaac 'Ike' RUCKER						
William RUCKER	09 Jul 1886	10 Nov 1967	Sparkman	Dallas	AR	
bro/o Lee RUCKER						
Arlis RUSSELL	17 Jul 1909	27 Aug 1932	Sparkman	Dallas	AR	
Betty Alice RUSSELL	24 Mar 1876	23 Jul 1949	Sparkman	Dallas	AR	
Joe Oliver RUSSELL	06 Dec 1880	13 Mar 1956	Sparkman	Dallas	AR	
William Hugh RUSSELL	21 Jul 1873		Sparkman	Dallas	AR	
Emma J. SELPH	1866	1940	Sparkman	Dallas	AR	
Florence SELPH	1889	1949	Sparkman	Dallas	AR	
Gail SELPH	1885	1942	Sparkman	Dallas	AR	
Alice Janette SHAMBLEY	24 Jan 1949	14 Oct 1964	Sparkman	Dallas	AR	
w/Olive Mae & Reptsie SHAMBLEY						
Herman SHAMBLEY	12 Jun 1880	24 Oct 1955	Sparkman	Dallas	AR	
h/o Minnie SHAMBLEY?						
Minnie SHAMBLEY	04 Jul 1883	16 Jul 1960	Sparkman	Dallas	AR	
w/o Herman SHAMBLEY?						
Olive Mae SHAMBLEY	26 Feb 1903	14 Sep 1944	Sparkman	Dallas	AR	
w/Alice & Reptsie SHAMBLEY						
Otis SHAMBLEY	14 Sep 1900	17 Jan 1966	Sparkman	Dallas	AR	
Reptsie Elaine						

SHAMBLEY w/Olive Mae & Alice SHAMBLEY Bobby Wayne	09 Apr 1951	09 Apr 1951	Sparkman	Dallas	AR
SHIRRON	28 Jun 1946	13 Jan 1968	Sparkman	Dallas	AR
Mattie SIMMONS Charles E.	no date	16 Feb 1947	Sparkman	Dallas	AR
SINQUEFIELD h/o Tyna T. SINQUEFIELD? Jessie Leonard	16 Sep 1883	28 Jul 1958	Sparkman	Dallas	AR
SINQUEFIELD	10 Oct 1908	15 Mar 1964	Sparkman	Dallas	AR
Louis SINQUEFIELD	10 Oct 1912	07 Jun 1928	Sparkman	Dallas	AR
Mae E. SINQUEFIELD	23 Sep 1885	25 Apr 1965	Sparkman	Dallas	AR
Thomas Fletcher SINQUEFIELD	25 May 1923	14 Jul 1948	Sparkman	Dallas	AR
Tyna T. SINQUEFIELD	20 Oct 1888	26 Feb 1928	Sparkman	Dallas	AR
w/o Charles E. SINQUEFIELD? William Perry					
SINQUEFIELD	31 Jul 1881	12 Aug 1928	Sparkman	Dallas	AR
Cornelia D. SMITH	1876	1951	Sparkman	Dallas	AR
Georgia Ella SMITH w/o Robert SMITH?	10 Aug 1859	23 Feb 1922	Sparkman	Dallas	AR
Hugh D. SMITH	1905	1931	Sparkman	Dallas	AR
J. Y., MD SMITH	16 Feb 1871	26 Dec 1930	Sparkman	Dallas	AR
Joel E. SMITH	1875	1946	Sparkman	Dallas	AR
Macye SMITH	1914	1937	Sparkman	Dallas	AR
Robert SMITH h/o Georgia Ella SMITH?	1885	08 Apr 1927	Sparkman	Dallas	AR
Sallie C. SMITH	30 Jul 1872	27 Dec 1958	Sparkman	Dallas	AR
F. E. SPACHT	18 Jan 1855	16 Aug 1938	Sparkman	Dallas	AR
James Barr STEWART	30 Jan 1947	30 Jan 1947	Sparkman	Dallas	AR
Chester Franklin STURGIS	30 Mar 1889	03 Jun 1963	Sparkman	Dallas	AR
Minnie Merrie STURGIS	06 Mar 1887	25 Apr 1935	Sparkman	Dallas	AR
w/William Pleasant STURGIS William Pleasant					
STURGIS	21 Jan 1884	17 Feb 1967	Sparkman	Dallas	AR
w/Minnie Merrie STURGIS Carrie Benton					
TAYLOR	20 Dec 1887	19 Jun 1962	Sparkman	Dallas	AR
w/o Philip Horace TAYLOR Edwin Samuel					
TAYLOR	05 Nov 1859	19 Oct 1936	Sparkman	Dallas	AR
f/o Dr. J.E.M. TAYLOR? Helen DeLaughter					
TAYLOR	16 Sep 1905	17 Jan 1962	Sparkman	Dallas	AR
John Edwin Marvin, MD					
TAYLOR	28 Apr 1885	03 Jul 1957	Sparkman	Dallas	AR
Juanita TAYLOR	1924	1946	Sparkman	Dallas	AR

Philip Horace TAYLOR	12 Sep 1888	21 Mar 1958	Sparkman	Dallas	AR
h/o Carrie Benton TAYLOR					
Virginia Belle TAYLOR	16 Feb 1865	20 Jan 1923	Sparkman	Dallas	AR
m/o Dr. J.E.M. TAYLOR?					
William O. THWEATT	19 Jun 1909	20 Feb 1962	Sparkman	Dallas	AR
Adelle Pittman TURNER	08 Apr 1911	13 Mar 1941	Sparkman	Dallas	AR
Henry C. VANN	18 Feb 1872	18 Dec 1941	Sparkman	Dallas	AR
Henry Felix VANN	12 May 1912	23 Apr 1961	Sparkman	Dallas	AR
Jones W. VANN	1918	1944	Sparkman	Dallas	AR
Mattie VIANNA	04 Sep 1894	27 Apr 1967	Sparkman	Dallas	AR
Jack Claybourne WALLIS	22 Jun 1961	04 Jan 1938	Sparkman	Dallas	AR
Collie WEST	1870	1940	Sparkman	Dallas	AR
John Thomas WEST	1878	1956	Sparkman	Dallas	AR
Hugh J. WILLIAMS	10 Mar 1904	29 Aug 1908	Sparkman	Dallas	AR
James A. WILLIAMS	22 Aug 1871	15 Feb 1944	Sparkman	Dallas	AR
Louis F. WILLIAMS	19 May 1892	26 Jun 1954	Sparkman	Dallas	AR
Mattie E. WILLIAMS	09 Apr 1881	25 May 1928	Sparkman	Dallas	AR
Milton P. WILLIAMS	01 Nov 1907	17 Nov 1932	Sparkman	Dallas	AR
Wilson M. WILLIAMS	29 May 1877	25 Sep 1921	Sparkman	Dallas	AR
Edward A. WOOD	1881	1961	Sparkman	Dallas	AR
Infant son WOOD	21 Jul 1930	21 Jul 1930	Sparkman	Dallas	AR
s/o W. N. & A. E. WOOD					
Lute G. Sr WRIGHT	07 Jan 1875	30 Sep 1957	Sparkman	Dallas	AR





## Melungeons in Arkansas

---

By Russell P. Baker, 6525 Magnolia,  
Mabelvale, AR 72103

As early as 1654, English and French explorers in the southern Appalachians reported meeting strange native people who were dark skinned with brown or blue eyes. According to some sources, they spoke a form of Elizabethan English, lived in cabins, tilled the land, and smelted silver like “white men.” They were also reported to be practicing a form of Christianity. When asked about their origins, they universally reported that they were of “Portygree” (Portuguese) origin, though it was clear that they also had African and Native American roots. Shortly after the American Revolution, these mixed race people encountered the Anglo-Americans then moving into western parts of North Carolina and eastern parts of Tennessee.

By that time these people called themselves Melungeons, a word of unknown origin. Their American neighbors called them “free persons of color” and subjected them to many of the same kinds of discrimination and lack of civil rights as other non-white American. Because of this some Melungeons blended into the white world, while those classed as “colored” were forced to carry with them at all times their “free papers” in order to prove that they were not “run away” slaves. These free papers were also supposed to be recorded with the officials in the counties where they lived. Melungeon families show up on censuses in Tennessee as early as 1820 as free persons of color. From time to time, in my personal research, I have turned up several suspected Melungeon families on 1850 and 860 census records. Although they are listed as white, they are unusual in that they have very large households, usually headed by women. These women are evidently the mothers of very young children, but year after year, there were no resident adult males in their

households. This indicates to me that at least some Melungeon families were matriarchal in family structure like many Native American and some African American families.

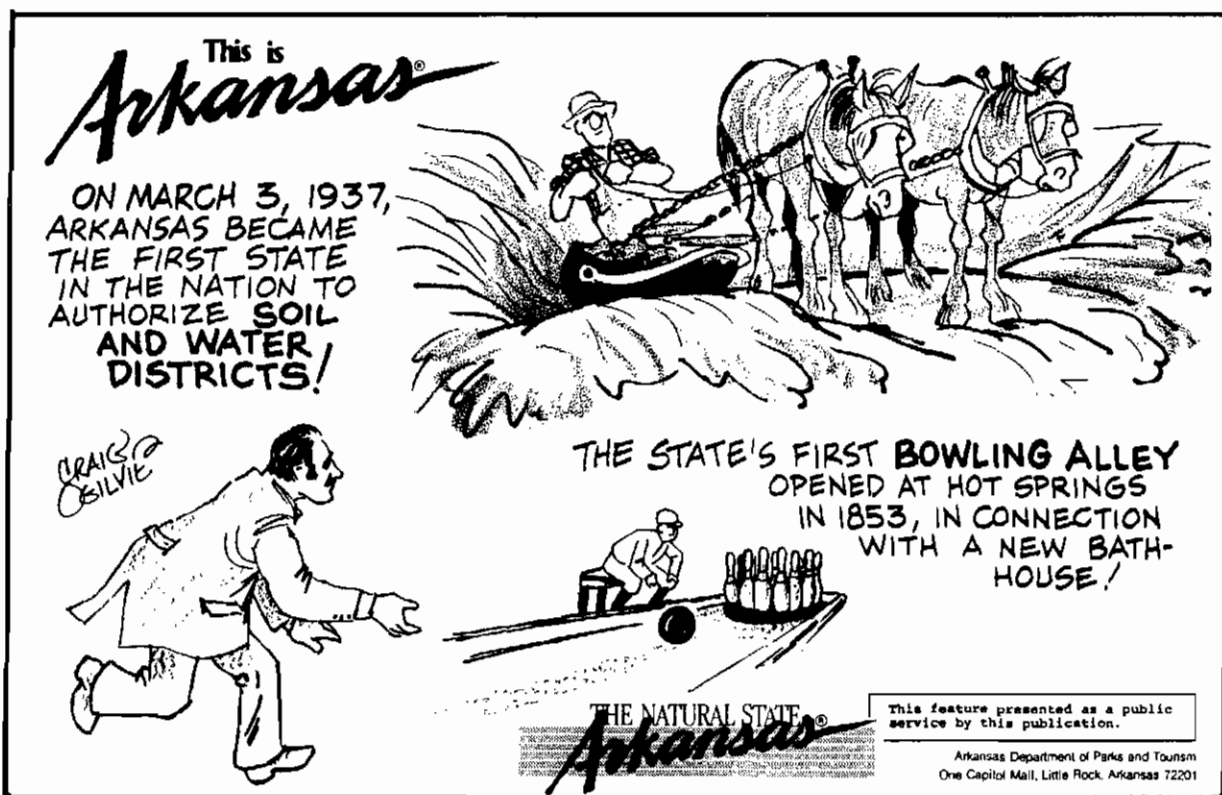
For years, I have heard rumors about Melungeons in Arkansas. However, proof of this has been lacking. Recently I received some interesting information about an early Marion County, Arkansas, pioneer named Thomas Hall. It consisted of a set of “free papers” in the form of an affidavit filed on December 2, 1847, with the county clerk of Marion County. Unfortunately, the early records of this county were destroyed a number of times. However, since a “free person of color” was required to register his papers each time he moved, these “papers were re-recorded early in 1850 when Mr. Hall moved across the state line into Oregon County, Missouri. They were again re-recorded in 1890 in Howell County, Missouri. Here they are: “State of Tennessee, Maury County. This day personally appeared before me James L. Crawford, one of the Justices of the Peace in and for said county, Thomas Hall and made proof by private testimony that the said Thomas Hall is entitled to all the privileges of a private [free] citizen. Thomas Hall’s great grandfather on his fathers [side] was a portagee and his great grandfather on his mothers side was a englishman and Thomas Hall grand [father] on his mothers side was an irishman and his own father was of Portagee decent and his mother was a white American born woman. Sworn and executed before me this 19<sup>th</sup> day of September 1835. [Witness] Prescott Nupans and Lonney [a woman] Halls.”

Hall moved to Marion County, Arkansas, about 1840, where he settled in a large community of other “free persons of color”, many also named Hall. He shows up on surviving Marion County tax records until 1847. By 1850, he is living in Oregon County, Missouri, and is listed as a Mulatto

with a white wife. He is in Howell County, Missouri, in 1850 listed as white. He died December 30, 1888, and is buried in Howell County.

For additional information, see a folder entitled "The Hall Family and Other Free Blacks of Marion County, AR: in the Family History File at the Arkansas History

Commission and State Archives in Little Rock. For more information on the Melungeons, see Jean Patterson Bible, *Melungeons Yesterday and Today* (1975) and N. Brent Kennedy's *The Melungeons; the Resurrection of a Proud People* (1994).



## Arkansas Queries

### General guidelines for submitting queries:

- 1) Queries are limited to members only
- 2) Please submit no more than one query per calendar year
- 3) Keep the query to approximately fifty words
- 4) Neatness counts! If possible, type, double spaced. Otherwise, print legibly leaving a space between each line.
- 5) Capitalize surnames
- 6) Remember the 4 W's"
- 7) Who - Give complete names of interest  
What - What do you want? Keep it short and to the point

Where - Locality in ARKANSAS

When - Give a time period

Since we always work with a large backlog of queries, we strive to print them in the order in which they were received. It may be several months, however, before your query appears. We do use all queries received in a calendar year by the end of that year. We continue to receive queries with no name and address included. If the query gets separated from the envelope, we cannot use it. It simplifies the work of the all-volunteer staff of this publication if you send your query with your membership fee to Arkansas Genealogical Society, P. O. Box 908, Hot Springs, AR 71902-0908.

**Gathright, Sinclair, Poole** Researching these lines in Union County during 1850s.  
**Isabel Singer Gathright, 1144 Arnold Palmer Dr., Maumelle, AR 72113-6452; email:**

**Rains, Clifton** Seek info on these families in 1860--1900 in Carroll Co., AR. **Verlen L. Reeves, 1161 Evans Ave., Napa, CA 94559-2154**

**Webb, Reece, Nelson** Need info on families of Woodrow Webb, Edna Reece an Elmo Nelson in Grant Co., AR. **David B. Howell, 111 Parlange, Thibodaux, LA 70301**

**Hester, Bond, Terrell, Gratehouse/Greathouse, Beasley, Runncls** Researching these lines in Howard Co., AR. **Enid W. Hurry, 980 Fish Hatchery Rd., Huntsville, TX 77320-7008**

**Crain** Researching Benjamin Thomas Crain; Hester Ann England Crain; William Crain;

**Elza Crain.** Benjamin Harvey Crain/Crane arrived in Conway Co. Prior to 1880 census. Looking for details on family. **B. Byron Crain, 2235 W. Glenalden Dr., Germantown, TN 38139-5426**

**Coffey** Seeking death certificates or proof of death of Melissa Anna Coffey and husband Robert Thomas Coffey. Anna was born c1845, dau. of Isaac Davis Dalton and Susannah Marshall, and died between 1923-25. They lived in Forsyth Co., NC, before moving to AR. An obituary showed she lived in AR, no location given. **Don S. Shelton, 1640 Brown St., Winston-Salem, NC 27105**

**Tompkins** Researching Charles Jefferson Tompkins, b. 1 Sept 1886 at Lanesburg, Nevada Co., AR, d. 30 June 1966, Sulphur Springs, Hopkins Co., TX. **Velma Tompkins Hancock, 604 Houston St., Queen City, TX 75572-2282**

**Barnes** Searching for descendants of Ashley Barnes, b. 1822. 1870 Grand Glaise Twp., Jackson Co., AR; wife Frances and son William Barnes. **Carolyn Anderson, 5607 Dogwood Dr, Lincoln, NE 58616-1428**

**Johnson, Dill, Stanley, Harris, Huff** Seek info on these families from Judsonia, Wolf Bayou areas;, White and Cleburne counties. **Peggy Lowry Gibson, 153 Young's Creek Way, Kingston, TN 377663**

**Vickers** Searching for any of this line TN to AR, especially Baxter and Stone Counties, or Canon and Smith Counties, TN. **Joan Vickers, 110 Pine Meadows Loop, Hot Springs, AR 71901**

**Froshour, Henry**, b. 1789, PA, d. 1869 Washington Co., AR, m. 1821, Janie R. Finley, who was 80-90 yr. Old white female in their household of Vineyard Twp., Washington Co., AR, in 1840 census. Need further info. **Linda Gomlicker, 15753 N. 102<sup>nd</sup>, Scottsdale, AZ 85259-8619**

**Hatcher** Seek info on James M. Hatcher, b. 1835 TN, m. Sarah Jane Hudson, b. 1835 VA. Their dau., Tennessee Elizabeth Hatcher, m. Jefferson Rowlett. Would like

info on T. J. Rowlett's mother, Elizabeth Harris. **Charlene Merle Presley, 12413 N. 25<sup>th</sup> Ave., Phoenix, AZ 85029-2532**

**Sanders** Seeking parents of Joseph Steven Sanders, b. c1846 AL/AR, d. c1901 Marion Co., AR; m.c1879, Mary Catharine :”Molly” Wood, Marion Co. Children include Martha J. m. Doshier; Mary Agnes m. Henson; Joseph “Jody”; Birdie Bell, m. Keeter; Laurie, who d. young. **Charlene Rambaud, 5607 Glenhaven Cir., Westlake Village, CA 9362**

**Stewart, Sudduth, Boyd** Seek ancestors of Marion J. Stewart who m. Rebeccie Sudduth in Lawrence Co., AR, 1900; also George Wells, Martha Richardson and their family. George Wells' son, Charley, d. 1954. Did George have any other children? Any descendants of John Franklin Boyd who m. Pearl Young in 1903. Pearl Blaylock who m. James Chastain. **Jody Boyd, 47 Palestine Rd., Amity, AR 71921**

**Clifton** Need information on families of James R. Clifton and/or William Clifton from Carroll Co., AR. **V. Reeves, 151 Evans Ave., Napa, CA 94559-2154**

**Bass, Foote, Stevens/Stephens, Childress** Floy DesArc Stevens m. Edward Jackson Foote on 4 Feb 1911, Little Rock, AR. Nancy Caroline Bass m. Christopher Columbus Stevens on 16 Dec 1880, Lonoke, AR. Nancy Caroline died within five years of marriage. Seek her death date and place. Sally Childress was previous wife of Christopher Columbus Stevens. **Mrs. Dorothy D. Keys, 1801 Winne Ave., Helena, MT 59601-4706**

**Roberts, Moses**, was living in Ash Flat, Sharp Co., AR, in 1880. Seek any information concerning his date of death. **Lewis Roberts, 12014 NE 140<sup>th</sup> St., Kirkland, WA 98034**

**Lee, Treat, Ott** Seek info on these lines in Searcy Co., Big Flat Twp. **Virginia Hoffman, 109 Lugo Dr., Fairfield, CA 94533-2819**

**Bradley**, George Washington, b. Culpeper Co., VA, emigrated to Princeton, Dallas Co., AR, in 1847. Did other Bradleys come to AR

at the same time from VA? **Fred C. Huggins, 1471 Park Ave., San Jacinto, CA 92583-57222**

**Lee** Seek information on Ferdinand Lee and family of Lafayette Co., AR. **Willowese C. Grenier, 2316 44<sup>th</sup> Ave., Vero Beach, FL 32966-2043**

**Morris** Want to exchange info with descendants of Isaac Morris, b. c1787; d. after 1860, and wife, Thyrsa Hinds Morris, b. c798, d. after 1870, of Lawrence Co., AR. **Donald V. McCalister, Sr., 2978 Hurricane Rd., New Market, AL 35761**

**Rushing** Need info on William (Bill) Rushing who m. Mattie Marath Liggett; father was killed during Civil War; mother had died some time before; children,, two boys and two girls, went to different homes to live; one boy had a handicap of some kind. **Roberta Bradley, 9912 Pilot Point, Fort Worth, TX 76108**

**Lee** , Richard Vinson, grandson of Margaret Stovall Lee, b. 19 Jan 1847, TN, and John Newton Lee, b. Oct. 1845, d. 24 Sept 1913, Carlisle, AR. Margaret d. 10 Feb. 1934 while an inmate of AR Confederate Home. Connected family names are Portis and Harrison. **Judith Riddle Parker, 6273 Red Hollow Rd., Birmingham, AL: 35215-1077**

**Foster** Looking for parents or any info on Levi Foster, d. 1845 Pulaski Co., AR; wife, Sarah Hamilton Foster, Little Rock, AR, c1865. Children: William M. 1840, AL; John, b. 1845, AR; Robert, b. 1850, AR. **Nanette Debault, 1916 CR 413, Yoakum, TX 77995**

**Rochelle, King** Currently researching these families in AR. **Robert D. Jones, 19 Cardinal Valley Circle, North Little Rock, AR 72120-1625**

**Martin** Looking for marriage date of H. T. and Elizabeth ? Martin, and their parents. H. T. b. 1848 in AL, Elizabeth b. 1852 AR. Need any info on these. **Margery H. Wheeler, 10814 Candlewood, Houston, TX 77042-1302**

**White** Looking for info on Sabra Ann Skinner Corbett White, b. 30 Oct 1828 AL, d.

23 May 1911 in Erath Co., TX, m. 1) Will B. Corbett in 1851 Clark Co., AR; m. 2) James Blackstone White in 1859. Sabra's sister, Emily E. Skinner, was also married to James B. White in 1846. **Virginia White Guyton, 901 Burleson, Smithville, TX 78957-1024**

**Hopkins** Searching for any info on Andrew Jackson Hopkins, b. c1820-40, wife was possibly Mary, son Larkin Wayne Hopkins. **David Plimmer, 11241 Golden Chestnut Ol., Las Vegas, NV 48135-1701**

**Riegler** Need info on family of John and Kathreine Reigler (1852-1930) from Little Rock, and their son, Nicholas Riegler, M.D., b. 1888. Would like photos of 12065 Rock Street home that was destroyed when I-30 interstate constructed. John was County Treasurer 1858-1874 and also on county council, Justice of the Peace and businessman **George Richardson, 9380 W. Mexico Ave., Lakewood, CO 80232**

**Scoggin, Humphrey** Need info on Richmond Scoggin, b 24 Nov 1852, Nashville, Howard Co., AR, and his wife, Lula Dale Humphrey?, b. 1860-62 AR. Where and when married? **Gayle Bergamini, RR 1 Box 658, Karnack, TX 75661-9717**

**Landes, McCallum, Williamson** Researching these lines in Lafayette, Columbia and Clark counties in AR. **Shirley Huss, PO Box 4927, Shreveport, LA 71134-0927**

**Martin** Need parents of Roderick Martin, b. 1840-41 TN; in 1850 in Poinsett Co., AR, census in household of Isabella (Allen) and Benjamin Lewis, also of TN. **Dr. W. Cary Anderson, PO Box 685, Decatur, AR 72722-0685**

**Wells, Childers/Childress** Seek info on these families of Lawrence Co., AR 1830 forward. **Carol T. York, 41 Four Winds Dr., Middletown, NJ 07748**

**Buice** Researching Buise, Buse, Buce anywhere in AR, and need any leads. **Michael Craigie, 6103 S. Owens Ct., Littleton, CO 80127-2478**

**Brewer, Caldwell** Jeremiah Brewer, Sr., b. c1777 appeared Hinds Co., MS 1830 census. Also residing in Hinds Co., MS, at that time was an Isaac Caldwell family. Jeremiah, Sr., had two sons, Jeremiah, Jr., b. 817 GA, and W. Caldwell, b. 1830 Hinds Co., MS. Both moved to Jefferson Co., AR c1847. Unconfirmed info is that they moved together to Jefferson Co. Want to exchange with others researching these lines. **George T. Brewer, Jr., 54741 Gage Lane, B301, Naples, FL 34113**

**Crawford, Gilliam** Searching for marriage record of James Jefferson Crawford and Sarah Francis Gilliam, who m. 15 Oct 1843 in AR according to family bible records. Need county record. **William P. Harrington, PO Box 61051, San Angelo, TX 76906**

**Andrew(s)** Seek info on Pascal B. Andrew, b. 1824 GA, m. Martha E., b. 1823, GA, d. Dec. 1859 in Bradley (now Cleveland) Co., AR in 1850-60. Children: Rebecca, Jefferson, Arkansas, Mary, Pascal, Joel P., Martha, Telitha and Charity. **Henry Wooley, 125 Brinkerhoff, Mansfield, OH 44906**

**Lay** Seek exact death dates for Jesse Lay and wife Susan Pennington Martin. Jesse d. 1875; Susan d. 1877; both buried Mortor Creek Cemetery, Faulkner Co. in unmarked graves. Are there funeral home notices, newspaper articles, other records that reflect the exact dates? **Jo Anna Dale, 704 Ponca Dr., Independence, MO 64056-2053**

**Douthit** Looking for info regarding Uriah J. Douthit, murdered near Evening Shade, AR, in 1867. He was a Freedman Bureau agent. **Dr. W. Cary Anderson, PO Box 685, Decatur, AR 72722-0685**

**Lusk** Want to find place and date of death of Jeremiah D. Lusk, b. 1850 AR, d. 1909, Independence Co., AR; the marriage date of Jeremiah and Sarah A. York, b. 1849-50, TN, d. 26 Jan 1921, Shawnee, OK. He is not listed in printed cemetery book nor is he listed in printed marriage book. **Mrs. Barbara J. Wagner, 45120 Hwy. 79 S, No. 652, Aguanga, CA 92536-9706**

**Spry** Does anyone have info on Sprys; believe they came from NC. **Della M. Rice, 2209 3<sup>rd</sup> Ave. North, Texas City, TX 77590-7215**

**Emery, Qualls, Reed, Chapman** Researching these lines in AR and would like to share info. **Pauline Kouvalas, PO Box 6604, San Jose, CA 95150-6604; [HPREW@infi.net](mailto:HPREW@infi.net)**

**Civil War Rest Stop/Motel** Looking for info on a Civil War rest stop/motel northwest of Carlisle, AR, by the name of Boggs Rest Stop. Need help finding this. **Ms. Mildred Northcutt, 2999 Fred Koch Road, Carlisle, AR 72024-8935**

**Burrus** Seeking parents of Henry Clay Burrus who lived in Little Rock after the Civil War; reported to be the son of Nathaniel Burrus of Todd County, KY. Henry Clay was b. 9/18/1828, d. 1/30/1881. **Robert A. Phillips, 51 Doblez Circle, Hot Springs, AR 71909-5109**

**Vanhorn** Wish to correspond with anyone regarding William M. Vanhorn, d. 11 Feb 1827 KY, d. 10 Feb. 1872 Desha Co., AR. Related families: Owens, Bonner, McColley, Camp. **Billie R. Fearing 5 Limousin Ln., Shwnee, OK 7804-1027; [ALRF1962@worldnet.att.net](mailto:ALRF1962@worldnet.att.net)**

**Polk** Seek info on Margaret Polk, b. 1857-58, dau. of Benjamin Polk, Ouachita Co., AR. **Darla J. Foley, PO Box 6903, Big Bear Lake, CA 92315**

**Nettles, Meredith** William Nettles, b. c1782 NC (on the Wayne Co., TN, census), m. Deborah Meredith in 'TN; located in Green (now Clay) Co., AR, c1840. Want to contact anyone researching this family, my brick wall. **Darlene Jackson Hofer, PO Box 661, Waskom, TX 75692-0661; [ehofer@internetwork.net](mailto:ehofer@internetwork.net)**

**Callahan** Seek info on Andrew McDonald Callahan, b.1792, Rutherfordton, NC, m. Amy Keeterr. Andrew d. May 1880, Yellville, Marion Co., AR. Parents Henry and Elizabeth McMurry Callahan of Scotland and Rutherford Co., NC. **William C. Clem,**

**80944 Moss Creek Dr., Reno, NV 89506-3121**

**Simonton, Calhoun, Gresham** Researching James H. and Felix G. Simonton; Archibald Calhoun, daus. Harriett and Margaret, Ashley Co., AR, 1850s- 60s; also William R. Gresham, Phillips Co., AR, 1840s-50s. **Jackie Helmke, 209 Henderson, San Antonio, TX 78209; [helmke@juno.com](mailto:helmke@juno.com)**

**Haggard, Mason, Rogers, Kizzia, Funston, Brashears, Patterson, Ross, Johnson, McBryde, Bowers, Crawford, Lewis.** Researching these families in AR 1830-1900, and desire o exchange info. **Wanda Poteet Haggard, 1409 N. Sherry Ln., Shawnee, OK 74801-5421**

**Jaggers** Seek info on ancestors of Amos Franklin Jaggers, b. 1855 AL, sibs: Iza and Robert, m. Sarah Matthews 1881 in Lawrence Co., AR. Children: Newton, James, John, Melinda, Orella, America Estalla and Homer. **Georgia Haldeman, 74 Valley View Rd., Heber Springs, AR 72543-8114; [3pine@arkansas.net](mailto:3pine@arkansas.net)**

**Briggs** Need info on Hughs Briggs and Myra Wilmeth Briggs who may have lived near Hog Jaw, AR , in 1800s. Where did they live? **Neal Noble, 49 Winsome Way, Pencader Village, Newark, DE 19702-6313**

**Dawson** Need info on Stella/Zella/Della J. Dawson, b. Pope co., AR, between 1905-1910; dau. of George Frank Dawson and Lulu Wilson Dawson. Wilson was from Luli's first marriage. Who did they marry and who were/are their descendants. **Clarence L. Dawson, 2432 Blake, San Bernardino, CA 92407**

**Wallis** Need info on father of Allen Wallis, b. 1818 SC, Alfred Wallis, b. 1825, Fayette Co., AL; maiden name of Edith, b. 12 March 1800, Chesterfield District, SC. All came to Hot Spring County, AR, 1851. Her father Burgess Davis, 1810 Chesterfield District, SC, 1840 Fayette Co., AL? **Edith M. Guyse, 12954 Leith Way, Yucaipa, CA 92399-434**

**Potts** Would like info on Dr. John J. Potts, b.1811, PA, d. 182,Roseville, AR; m. Susannah A. France, b. 1815 Westmoreland Co., PA, d. 1889, Paris, AR. Children: Clarissa Potts Sadler, Agnes Potts and Theodore F. Potts. **Nina Sadler Bell, 15220 Meadow Wood Dr.,Wellington, FL 33414-9003**

**Burnham**, Isaac, had a ferry on the Arkansas River. He married into the Underwood and Johnson families from Logan Co. who are buried in Graves Cemetery in Delaware, AR. Underwoods were also in Bates, AR. Seek info on these lines. **Rose Cunningham, 770Kingswell Ave., Banning, CA 92220**

**Robinson** Looking for info about the death of David Robinson in DeQueen, Sevier Co., on or about 17 August 1857. Was reported to have died by gunshot or stabbing. He was married to Sarah B. Houston; children: James Emmitt and Elizabeth Jane. **Gail B.**

**Meacham, 1525 Brandon Dr., Marietta, GA 30008-3738**

**Hollingsworth** Need parents of James Wesley Hollingsworth and Pamela Caroline Watson, who m. 1849, Greenville Co., SC 1850 census shows Nancy Hollingsworth, age 47, b. SC. In same house a dau. Eliza Hollingsworth, age 16, b. SC; son Aaron Hollingsworth, age 11, b. SC. 1860 Saline Co., AR, shows Nancy, 57, with Eliza Hollingsworth, James Perry Owens, Aaron Hollingsworth, Elsa Jane and Mary, age 56. About 1864 Mary Hollingsworth m. Peter Sutton in Hot Spring Co., AR. **Beatrice Foster, RR 17 Box 275 A, Lake City, FL 32055**

**Rawlinson/Rollinson** Seek any info or pictures of the community in St. Francis County in early 1900s; also origin of Jesse, Joab or Ezekiel. **Dr. Barry Henson, 221 via Los Miradores, Redondo Beach, CA 90277-6761**

**Ferguson** Looking for info on David Ferguson, b. 1816 GA, moved to Carroll Co. before 1845. Need info on his parents. His mother may have been Elizabeth? **Dolores**

**Elliott, 6281 SE Deering Dr., Milwaukie, OR 97222-2325**

**Rogers** Wish to contact descendants of Richard Rogers, b. 1800 NC, and son, Calvin Landram Rogers, b. 1 Oct 1837 NC. Family moved to Brownsville, Cleburne Co., AR, c1850. Calvin married Sarah Lanning, dau. of Joseph Lanning. **Violet Shelton Buchler, 854 Blue Crane Dr., Venice, FL 34292; email: VShelton@aol.com**

**Ashbrook** Looking for info on Hannah A. Ashbrook and son John G. Ashbrook. Hanna was b. c1812 in Washington Co., MO, dau. of George and Sarah Ashbrook. In 1850 she was living with her three brothers, Moses, Aaron and John in Pike Co. In 1860 she was living with brothers Aaron and John in Pike Co. In same household was listed her son J. G., age 7, which means he was b. 1853. 1880 census of Pike Co., AR, lists John G. Ashbrook (age 27, b. 1853) and wife Elizabeth S. (age 35, b. 1845) his sons, John S. (age 4, b. 1876), Ephriam A., (age 2, b. 1878), dau. Charolotte J. (age 2/12, b. 1880), and mother, Hannah (age 69, b. 1811 MO). Hannah was listed as "Infirm, blind left eye." **Hyatt McCann, 3137 Monte Vista, Torrington, WY 82240; email: mccann@communiconn.com**

**Spring** Would like to correspond with any one researching the name Spring. Looking for a connection to James Spring, who joined the Confederate Army in Howard Co., AR. According to census, he m. an Evaline Moody after the Civil War and continued to live in Howard Co. **Patsy R. Livingston, 1408 Texas Hwy. 77 West, Atlanta, TX 75551-6129; email: [fourpines@juno.com](mailto:fourpines@juno.com)**

## Book Reviews and Notices

Bobbie Jones McLane, Russell P. Baker, Jan Eddleman,

**A New Genealogical Atlas of Ireland**, by Brian Mitchell, 175 pages, softbound, offered by Genealogical Publishing Co., Inc., 1001 N. Calvert, Baltimore, MD 21202, \$20.00.

Since its publication in 1986, this volume has established itself as a key resource in Irish genealogical research. Now, with the addition of maps detailing the location of Roman Catholic parishes in all thirty-two counties of Ireland and Presbyterian congregations in nine counties of Northern Ireland, this new 2<sup>nd</sup> Edition moves the book to the forefront of Irish genealogical research. Also, for the first time ever, this one volume contains a complete geographical picture of three major religious denominations in Ireland during the middle years of the 19<sup>th</sup> century.

This is important because civil registration for everyone in Ireland did not begin until 1864. Prior to that, the only records of births, marriages and deaths were found in local parishes. Therefore, the first step in Irish research for the first half of the 19<sup>th</sup> century and before should be to identify the denomination and parish of your ancestor. Although the Townland Indexes from 1851, 1871 or 1901 will show the location of each civil parish (which generally corresponds to the boundaries of the Church of Ireland Parishes), it has been much more difficult to uncover the corresponding Catholic or Presbyterian congregation. Until now!

This new second edition is not only valuable for tracing your pre-1864 ancestors in

church records but also for locating your post-1864 ancestor in civil records, for this volume provides descriptions and maps of the parochial and civil administrative division to which all major Irish record sources are linked. To aid the researcher in identifying the precise location of the administrative division, and thus their jurisdiction, Mr. Mitchell has drawn at least four and sometimes five, maps for every county. The first county map depicts the civil/Church of Ireland parishes; the second shows the baronies and Church of Ireland dioceses; the third map illustrates the poor law unions and the parishes included within the probate district serving that county; the fourth plots Roman Catholic parishes and dioceses; and the fifth locates Presbyterian congregations for the nine counties of Northern Ireland. Three maps of Ireland are also included to show the area covered by each county, diocese, and probate district. In addition, the book describes all of the major record sources of Ireland.

These maps provide the clues to the Irish origins of millions of America, making this atlas indispensable for tracing ancestors in Ireland.

**Directory of Professional Genealogists 2001-2002** has been published by the Association of Professional Genealogists, PO Box 40393, Denver, CO 80204-0393, perfect bound, 208 pages, indexed, it lists, alphabetically, the researchers who registered to be included, with biographies, research specialties and related services. It also contains a code of ethics the researchers are expected to follow. The book is priced at \$15.00 postpaid and can be ordered from the association at the address shown.



## Index

<hr/>		
<b>A</b>		
Adair		
Mabel Hays.....	22	
W. P.....	18	
AL		
Fayette Co.....	36	
Allen		
A. L.....	20	
V. V.....	9	
Alzheimer.....	10	
Anderson		
Alma Duncan.....	22	
Carolyn.....	33	
Dr. Cary W.....	35	
Dr. W. Cary.....	35	
John Thomas.....	22	
Andrew(s)		
Arkansas.....	35	
Charity.....	35	
Jefferson.....	35	
Joel P.....	35	
Martha E.....	35	
Mary.....	35	
Pascal.....	35	
Pascal B.....	35	
Rebecca.....	35	
Telitha.....	35	
Anthony		
Gene.....	8	
Antimony City.....	9	
AR		
Ashley Co.....	36	
Brinkley.....	3	
Carlisle.....	36	
Carroll Co.....	34	
Forrest City.....	9	
Green/Clay Co.....	36	
Hog Jaw.....	36	
Hot Spring.....	36	
Howard Co.....	37	
Independence Co.....	35	
Lawrence Co.....	36	
Marion County.....	32	
Ouachita Co.....	36	
Paris.....	37	
Phillips Co.....	36	
Roseville.....	37	
Yellville, Marion Co.....	36	
Ark.		
	Boydsville.....	18
	Danville.....	18
	Huntsville.....	18
	Salem.....	18
	Wittsburgh.....	18
	Arkadelphia.....	10
	Arkansas	
	Bradley County.....	21
	Calhoun County.....	20
	Van Buren, Crawford	
	County.....	18
	Armstrong	
	Edwin Stanton.....	6
	Asberry	
	Daniel B.....	19
	Ash	
	Miss Jane.....	8
	Ashbrook	
	Aaron.....	37
	Charlotte J.....	37
	Elizabeth S.....	37
	Ephriam A.....	37
	George.....	37
	Hannah A.....	37
	J. G.....	37
	John.....	37
	John G.....	37
	Moses.....	37
	Sarah.....	37
	ASHbrook	
	John S.....	37
	Askew	
	Judge Benjamin F.....	20
<hr/>		
	<b>B</b>	
	Bailey	
	Silas.....	8
	Baker	
	Russell P.....	31
	Russell P.....	38
	Barclay	
	Mrs.....	9
	Barnes	
	Ashley.....	33
	Frances.....	33
	William.....	33
	Barns	
	J. J.....	15
	Bass	
	Nancy Caroline.....	34
	Baugh	
	J. D.....	9
	W. A.....	9
	Beebe.....	8
	Bell	
	Charles.....	20
	Charles E.....	22
	Louella McMullens.....	22
	Maude Culbreath.....	22
	Nina Sadler.....	37
	Paul A.....	22
	Ben Hur.....	18
	Bennett	
	Lucinda.....	13
	Pat Lape.....	7
	Benson	
	C. F.....	14
	W. D.....	14
	Bergamini	
	Gayle.....	35
	Berry	
	Rev. Thomas H., Sr.....	22
	Bethea	
	Clarence G.....	22
	Betten	
	J. C.....	10
	Bettis	
	Lawrence L.....	22
	Biggers	
	L. A.....	21
	Bird	
	Lydia A.....	18
	Biscoe.....	3
	Blackland.....	20
	Blakely	
	Lillie Lee.....	22
	Sarah Avant.....	22
	William Robert.....	22
	Blaylock	
	Pearl.....	34
	Bledsoe	
	Newt K.....	22
	Blhowie?.....	22
	Blythe	
	Miss Maxine Elliott.....	20
	Bockstruck	
	Lloyd.....	4
	Bodenhamer	
	Keven.....	3
	Boen	

Ebb C.....	22	P. P.....	16	Chisum	
Mahalie Seale.....	22	Burke		John G.....	18
Boggs Rest Stop.....	36	P. P.....	16	Chittum	
Boles		Burnham		Alice Bandy.....	23
W. H.....	20	Isaac.....	37	Dorothy Mae.....	23
Bolin		Burnison		Henry J.....	23
Miss Violet.....	8	A. W. or N.....	17	James E.....	23
Box		Emiline Elizabeth.....	17	Nathan M.....	23
Mrs. Mellie.....	20	Burns		Choctaw Nation.....	18
Boyd		Aron N.....	16	Churchill	
Dr. W. H.....	18	Benjamin.....	8	Gen.....	7
Jody.....	34	Louretta.....	13	Cicalla.....	9
John Franklin.....	34	M. A.....	15	Clarendon.....	3
Bracy		M. E.....	15	Clawson	
W. J.....	10	Thomas.....	16	Aubrey.....	23
Bradford.....	10	W. H. W.....	13	Jack.....	23
Bradley		W. W.....	15	Sam.....	23
George Washington.....	34	Burrus		Clay	
Roberta.....	34	Henry Clay.....	36	Willilam T.....	23
Brandon		Nathaniel.....	36	Cleveland	
J. L.....	9			Charles.....	16
Brent		<hr/>		Ida.....	16
J. Ernest.....	22	<b>C</b>		Clifton	
Brently [?]		Calhoun		James R.....	34
M. J.....	14	Archibald.....	36	William.....	34
Brewer		Harriett.....	36	Coats	
George T., Jr.....	35	Margaret.....	36	Sarah B.....	16
James E.....	22	Callahan		Coffey	
Jeremiah, Jr.....	35	Andrew McDonald.....	36	Melissa Anna.....	33
Jeremiah, Sr.....	35	Elizabeth McMurry.....	36	Robert Thomas.....	33
W. Caldwell.....	35	Callahan's Stave Camp...	9	Cole	
Briggs.....	36	Callaway		John B.....	23
Hughs.....	36	John W., Jr.....	22	Lillie Creech.....	23
Myra Wilmeth.....	36	Marie Scott.....	22	Conard	
Brown		Camden.....	10, 18	Henry.....	15
Claude L.....	22	Camp Chase.....	7	Louaner.....	16
James W.....	20	Camp Victor.....	18	Conway.....	20
John Francis Marion.....	8	Campbell		Coody	
Lemuel J.....	22	Price.....	8	Wm. S.....	19
Mary A.....	22	Caple		Cook	
Zula Velma.....	22	Carl V.....	22	Eileen.....	6
Bruntler		Carlisle.....	4	Cooper	
W. Henry.....	16	Carr		Molie.....	17
Bryant		Widow.....	5	Walter S.....	23
Mary DeLaughter		Carter		Corbett	
Williams.....	22	John Thomas.....	22	Will B.....	35
Marynell.....	4	Miss Marjorie.....	8	Cosssatot River.....	10
Buchanon		SWilliam Walter.....	23	Cotton Plant.....	3, 4
T. C.....	20	W. C.....	23	Craigie	
Buehler		Childress		Michael.....	35
Violet Shelton.....	37	Sally.....	34	Crain	
Bunn		Childs		B. Byron.....	33
Judge.....	20	C. C.....	20	Benjamin Byron.....	6
Burk					

Benjamin Thomas.....	33
Elza.....	33
Hester Ann England.....	33
Thomas Marion.....	6
Crain/Crane	
BEnjamin Harvey.....	33
Crawford.....	35
James Jefferson.....	35
James L.....	31
T. D.....	12
Creswell.....	8
Crosley	
Joseph H.....	23
Crossley	
E. A.....	23
Etta E.....	23
J. W., Sr.....	23
Joseph E.....	23
Crouse	
Joseph Dean.....	23
Crow	
C. B.....	17
Eleza L.....	15
Emily J.....	15
Mary A.....	16
Sarah.....	14
Cunningham	
Rose.....	37
<hr/>	
<b>D</b>	
Daily	
Betty.....	23
Herbert.....	23
Twin sons.....	23
Dale	
Jo Anna.....	35
Dalton	
Isaac Davis.....	33
Miss Essie.....	8
Daniel	
Capt. James M.....	19
Morris E.....	23
Ralph.....	23
William Hugh.....	23
Darby	
Charley.....	23
Katherine.....	23
Davenport	
Jan Hearn.....	18
Davis	
Bessie.....	11
Burgess.....	36

James.....	11
Dawson	
Clarence L.....	36
George Frank.....	36
Stella/Zella/Bella J.....	36
De Queen.....	8
Dean	
B. W.....	15
C. W.....	14
Deaton	
Edward.....	23
Kenneth Roy.....	23
Louisa.....	23
Debault	
Nanette.....	34
DeLaughter	
Benjamin.....	23
Eliza King.....	23
George W., Sr.....	23
John T.....	23
Mannie.....	23
Vinnie B.....	23
W. Brack.....	24
Dennis	
Margaret.....	18
Depper	
Mary Spencer.....	5
DeValls Bluff.....	3
Dickey	
Joe Elmer.....	24
Dinsmore	
Congressman.....	10
Douthi	
Uriah J.....	35
Dozel	
(M or Z)illen.....	14
Ella.....	14
Dpze;	
Sarah.....	16
Drummond	
Gillie.....	24
Drumond	
J. Harvey.....	24
Dunaway	
J. E.....	17
Dunlap	
C. Clude.....	24
<hr/>	
<b>E</b>	
Eagle	
J. P.....	7

Eales(?),	
Josephine M.....	18
Easley	
Mary.....	17
Eddleman	
Jan.....	6, 38
Edgar	
Jesse R.....	11
Mattie.....	11
Eerett	
William W(iseman) ...	24
El Paso.....	18
Elder	
Ira "Red".....	24
Elliot	
Dolores.....	37
Engle	
Miss Gertie.....	20
erguson	
David.....	37
Estell	
Miss Ruby.....	8
Brad	
Judge Jno. M.....	20
Eureka Springs.....	10
Evans	
James M.....	15
Laura L.....	15
Margrett A.....	13
P. H.....	13
S. C.....	13
Sarah A.....	14
Sarah F.....	15
W. A.....	13
Everett	
Emma S(eale).....	24
Ezell	
Agnes DAniell.....	24
Carolyn June.....	24
Mr. and Mrs. Harold..	24
Paula Kay.....	24
Sid.....	24
<hr/>	
<b>F</b>	
Farrish	
James.....	14
Saah A.....	14
Faulkner Co.....	35
Fearing	
Billie R.....	36
Fields	
Judge Richard.....	19

Finch	Bessie..... 12	Mary/May ..... 13
Elizebeth.....14	Ollie D..... 24	Myrtalee ..... 25
Fite	Rose E..... 24	S. E. A..... 13
Albert W.....24	Garrner	Thomas ..... 13
Mattie E.....24	Laura B..... 24	Greer
Fletcher	Gaston	A. or H. Virginia..... 16
Harriett.....14	Eura Smith ..... 24	C. Almeta ..... 16
Henry .....14	FELix Andrew, Sr..... 24	J. Mary ..... 16
Foley	James Richard..... 24	Grenier
Darla J.....36	John..... 24	Willowese C..... 34
Foote	Lucy ..... 24	Gustin
Edward Jackson .....34	Lucy Manning ..... 24	Miss Trixie..... 8
Forburn	Sim T..... 24	Guyse
Maggie..... 15	Sim(eon) T.(urner).... 24	Edith M..... 36
Ford	Gathright	Guyton
Lillie ..... 14	Isabel Singer ..... 33	Virginia White ..... 35
Mollie .....14	Gay	
Forrist	Ella..... 16	<hr/> <b>H</b> <hr/>
Bell .....13	H. B..... 16	Hackett
C. L.....13	J. A..... 14	John..... 10
E. L.....13	L. E..... 17	Haggard
Fort Delaware.....7	German	Wanda Poteet ..... 36
Fortner	Lila..... 17	Haldeman
Ben F. ....24	Gibson	Georgia ..... 36
Foster	Elder Thomas..... 21	Hall
Beatrice.....37	Peggy Lowry..... 33	Coleman B. .... 25
John.....34	Gilliam	Leslie E. .... 25
Levi.....34	Sarah Francis ..... 35	Lonney ..... 31
Robert.....34	Givens	Thomas ..... 31
Sarah Hamilton .....34	Henry E. .... 24	Hamilton
William M. ....34	Goff	William Robert ..... 25
Fowler	Miss Lena ..... 8	ZelmaTeddye ..... 25
L. H.....20	Gomlicker	Hamm
Frachiseur	Linda..... 33	Allen J..... 25
J. 20	Gordon	Arch ..... 25
France	Christine..... 13	Bessie..... 25
Susannah.....37	Christine C..... 16	Lucy ..... 25
Freeman	Nicy or Nicey..... 15	Mamie S..... 25
Helen.....24	Goswick	Hampton..... 20
Froshour	Sally..... 18	Hance
Henry .....33	Goza	Miss Rose..... 20
Fullbright	Ernestine Harris..... 24	Hancock..... 33
Mrs. A. L. ....8	Grace	Velma Tompkins..... 33
	Ernest W..... 24	Hardcastle
<hr/> <b>G</b> <hr/>	Infant..... 24	A. Nancy ..... 17
Gage	Graham	Hardin
Mary F. ....18	C. C..... 14, 15	J. W..... 8
Gardener	Graves	Hargan
W. R.....14	Robert ..... 8	M. M. .... 14
Garner	Green	Harrell
Annie Lou .....24	A. A. .... 13	T. W..... 20
John Thomas.....24	Charles ..... 13	Harrington
Garrett	Eudris Fay ..... 25	William P. .... 35
	Lewis ..... 13	Harris

Elizabeth.....	34	Rosa I.....	25	Lula Dale.....	35
Hattie.....	25	Hollingsworth		Hunt	
Leon.....	25	Aaron.....	37	Col. N. M.....	20
Harrison.....	20	Eliza.....	37	Hunter.....	3
Fletcher.....	25	James Wesley.....	37	Mary J.....	18
Olive E.....	25	Nancy.....	37	Hurry	
Hatcher		Holmes		Enid W.....	33
James M.....	33	Jethro.....	8	Huss	
Tennessee Elizabeth.....	33	Hood		Shirley.....	35
Hathcoagt		Julie E.....	25	Hutcheson	
Gene A.....	25	Samuel S.....	25	Miss Alma.....	8
Hawk		Hope.....	10		
Melvina.....	18	Hopefield.....	10		
Hayes		Hopkins		<hr/>	
Ethel.....	23	Andrew Jackson.....	35	<i>I</i>	
Hays		Larkin Wayne.....	35	Imboden.....	8
Charles Everett, Jr.....	25	Mary.....	35		
Charles Everett, Sr.....	25	Hopson		<hr/>	
Hector.....	18	Lela.....	25	<i>J</i>	
Helmke		Horne		Jacks	
Jackie.....	36	Baby.....	25	Louis Lane.....	26
Hendee		E. L.....	25	Jackson	
Charlie August.....	25	Edward B.....	25	General.....	19
Mary.....	25	O. D., Jr.....	26	Jacobson	
Hensley		Otis Dale.....	26	Charles.....	12
Ewing A.....	25	Richard B.....	26	Jaggers	
George M.....	25	S. B.....	25	America Estella.....	36
Henrietta.....	25	Sallie L.....	26	Homer.....	36
Henson		Samuel B.....	26	Iza.....	36
Dr. Barry.....	37	Horton		James.....	36
Herring		C. R. "Gina".....	11	John.....	36
John Henry.....	25	Horace S.....	26	Melinda.....	36
Hickman		Infant twin sons.....	26	Newton.....	36
Emma L.....	25	Olive King.....	26	Orella.....	36
Mary.....	25	Hot Springs.....	10, 18	Robert.....	36
Hill Top.....	20	Houston		Jasper.....	20
Hines		Sarah B.....	37	Johnson	
Effie.....	17	Howard		Gen. Joe.....	7
W. H.....	15, 17	Dr. Frederic.....	9	George W.....	8
Hofer		Mattie.....	11	Inez.....	17
Darlene Jackson.....	36	Robert.....	11	Mrs. Mattie.....	17
Hoffman		Howell		Robert L.....	26
Clarence.....	25	David B.....	33	Johnston	
Minnie Hurst.....	25	Howell Station.....	9	James J.....	4
Virginia.....	34	Hubbard		Jones	
Hogue		Margaret Harrison.....	1	Ada J.....	26
Connie Mae.....	25	Huddleston		Andrew W.....	26
John Solomon.....	25	Annie.....	17	Daniel C.....	26
Mary Susan.....	25	Hudson		Elijah B.....	26
William Deward.....	25	Sarah Jane.....	33	J. R.....	21
Holbrook		Huggins		Jackson A.....	26
Miss Lillian.....	8	Fred C.....	34	John W.....	26
Holland.....	20	Hughes		Mrs. M. L.....	17
Hollaway		Mattie.....	11	Robert D.....	34
John P.....	25	Humphrey		Sally.....	13
Roland R.....	25				

Jonesboro .....18  
 Joyner  
 Leila S.....26

**K**

Kaegler  
 J. W.....14, 15  
 Mary E.....14  
 S. E. ....14  
 Kaigton  
 C. W.....15  
 Kaufman .....20  
 Keeter  
 Amy .....36  
 Kelley  
 Jeff.....20  
 Kelly  
 Rosa Marie Chittum.....26  
 Kemp  
 James .....15  
 Mrs Elisabeth.....15  
 Kendall  
 Scott.....8  
 Kennedy  
 N. Brent .....32  
 Key  
 Infant.....26  
 John Wayborn.....26  
 Mr. and Mrs. Rufus.....26  
 Keys  
 Mrs. Dorothy D.....34  
 Kikng  
 Fannie L. Nix .....26  
 Kimbrough  
 James (infant) .....26  
 King  
 Fred.....26  
 George W., Jr.....26  
 George Walter.....26  
 James Edward.....26  
 Lorena P. Gill .....26  
 Kitchen  
 Nancy.....26  
 Tom.....26  
 Knight  
 Hershhal.....26  
 Mary Kate.....26  
 W. A. ....26  
 Knowles  
 Lenny.....18  
 Knowlton  
 W. R.....13  
 Koonce  
 E. L. ....20

Kouvalas  
 Pauline ..... 36  
 KY  
 Todd County ..... 36

**L**

Lacket  
 General..... 19  
 Lamartine..... 18  
 Lanark ..... 20  
 Land  
 R. H. "Judge" ..... 26  
 Langford  
 Walter ..... 8  
 Lanning  
 Joseph ..... 37  
 Sarah ..... 37  
 Launius  
 Wesley S. .... 26  
 Laws  
 Ruby C..... 26  
 Lawson  
 G or Zellen..... 16  
 Hew C..... 16  
 Sarah A. .... 16  
 Thomas B..... 16  
 Lay  
 Jesse ..... 35  
 Mrs. Jane Ann ..... 8  
 Lea  
 Cora Mae ..... 26  
 Edd..... 26  
 Lillian K..... 26  
 Lummie E. .... 26  
 MableE..... 26  
 NoraMyrtle ..... 26  
 Roy Wayne ..... 27  
 William P..... 27  
 Willmer ..... 27  
 Leamons  
 Erbele..... 27  
 Jesse A. .... 27  
 Robert Norman ..... 27  
 Scott ..... 27  
 Lee  
 Ferdinand ..... 34  
 John Newton ..... 34  
 Margaret Stovall ..... 34  
 Richard Vinson ..... 34  
 Leonard  
 Armelia ..... 27  
 Manervia Ann ..... 27  
 Leslie  
 Brice..... 20

Levett  
 Dallas ..... 20  
 Lewis  
 Benjamin..... 35  
 G. A. .... 13  
 Isabella /(Allen) ..... 35  
 Jessie N. .... 27  
 Jewell A. .... 27  
 M. F. .... 13  
 Liggett  
 Mattie Marath ..... 34  
 Lindsey  
 Z. W. .... 14  
 Little & Yowell..... 9  
 Little Rock ..... 10  
 Livingston  
 Patsy R..... 37  
 Lizenbee  
 Alexander M., MD..... 27  
 Logan Co..... 37  
 Lonoke..... 7, 8  
 Looney  
 John..... 18  
 Loudermilk  
 W. M..... 18  
 Luebking  
 Sandra ..... 4  
 Lusk  
 Jeremiah D. .... 35

**M**

Mabrey  
 Mrs. William ..... 8  
 Maccallough  
 Tobtta M. .... 15  
 Mammoth Spring ..... 20  
 Mann  
 Arch ..... 27  
 Marianna ..... 9  
 Marshall  
 Susannah ..... 33  
 Martin  
 Elizabeth ..... 34  
 Frank..... 20  
 H. T..... 34  
 Roderick..... 35  
 Susan Pennington..... 35  
 Mason  
 D. W., Maj. .... 5  
 John..... 15  
 Matthew  
 Sarah ..... 36  
 McArty

Karen Elaine .....27  
 McCalister  
   Donald V., Sr.....34  
 McCann  
   George W.....27  
   Hyatt .....37  
   Thomas B.....27  
 McCann  
   Harriett E. ....27  
 McCarty  
   Mrs. Mollie .....20  
 McClure  
   Thomas .....16  
 McCrory .....8  
 McCubbin  
   William .....8  
 McCulloch  
   Miss Virginia .....20  
 McCullough  
   J. J. ....13  
   Nancy Mary .....14  
   Rosy .....14  
   Tinnie.....16  
 McDaniel  
   Capt. James.....19  
 McElwee  
   Barnett .....5  
 McGee  
   C. N.....8  
 McGowna  
   Hanna J. ....18  
 McLain  
   Mrs.....10  
 McLane  
   Bobbie Jones .....38  
 McNair  
   Gen. ....7  
 Meacham  
   Gail B.....37  
 Meredith  
   Deborah .....36  
 Middlebrook .....20  
 Milner  
   Paul .....4  
 Milo .....8  
 Mineral .....20  
 Missouri  
   Oregon County .....31  
 Missouri  
   Howell County.....31  
 Mitchell  
   Brian .....38  
 Mizell  
   Etta W.....27

MO  
   Washington Co. ....37  
 Mo.  
   Toga.....20  
   Tuscumbia .....18  
 Monroe .....3  
   W. H. ....8  
 Moody  
   Evaline .....37  
 Moore  
   John T. ....27  
 Moose  
   Mrs. E. A. ....17  
 Morgan  
   Carrie Myrle Knight ....27  
 Moro .....3  
 Morris  
   Anne Wilkerson .....4  
   Annie L. (Gordon) .....27  
   Isaac .....34  
   J. W., Jr.....27  
   Jesse W. (illiam) .....27  
   John R. ....27  
   John W. ....27  
   Juanita .....27  
   Lois Louise .....27  
   Nellie .....27  
   Nettie .....27  
   Nettie J. (Canady) .....27  
   Rebecca P. ....27  
   Rex .....4  
   Robert O. ....27  
   Rufus.....27  
   S. Turner.....27  
   Thyrza Hinds .....34  
 Mosley  
   S. J. ....13  
   Wm. T.....16  
 Mound City.....10  
 Mountain Home.....8  
 Mulberry .....8

---

*N*

Naff  
   Clifford .....17  
 Nall  
   Fannie .....27  
   Henry Orren .....27  
 Nalls  
   Alvie Mae .....27  
 Nashville.....9, 10  
 NC  
   Rutherfordton.....36

Neb.  
   Arapahoe.....18  
 Neill  
   Michael.....4  
 Nelson  
   Elmo.....33  
 Nettles  
   William .....36  
 New Hope.....8  
 Newport.....18  
 Nichols  
   Dorcas .....3  
   Joseph .....3  
   Phoebe Gilliam .....3  
   Ransom .....3  
   Sarah Richardson .....3  
   William .....3  
 Nix  
   Riley.....27  
   Roland.....27  
 Noble  
   Bob.....8  
   Neal.....36  
 Northcutt  
   Ms. Mildred .....36  
 Nupans  
   Prescott .....31

---

*O*

Oakland.....8  
 OK  
   Shawnee.....35  
 Ola .....8  
 Oldham  
   Miss Mary K. ....8  
 olson  
   Lucy Geiselda .....21  
 Osburn  
   Ed.....15  
 Owens  
   James Perry.....37

---

*P*

PA  
   Westmoreland Co. ....37  
 Pack  
   Mary J. ....18  
 Paragould .....9, 10  
 Parker  
   Judith Riddle.....34  
 Patterson

Nuton .....	27
Pea Ridge.....	20
Pearce	
Jim .....	11
Pegg	
Capt. Thomas.....	19
Peggs	
Capt. Thomas.....	19
Perry .....	8
Pettigrew.....	20
Phillips	
Mrs. Sarah.....	20
Robert A. ....	36
Pierce	
Margaret Riley .....	5
Mollie .....	16
Pike Co.....	37
Pine Bluff.....	10
Pitchlynn	
P. P.....	18
Pittman	
Lola Mae Bozeman.....	27
Plummer	
David .....	35
Points	
Clifton W.....	27
John N.....	27
Maland A.....	27
Polk	
Benjamin.....	36
Margaret .....	36
Poole	
Col. C. L. ....	20
Porter	
Maude D. DeLaugter .....	24
Tom L.....	28
Posey	
Arnton P.....	28
Potts	
Agnes .....	37
Dr. John J. ....	37
Theodore F.....	37
Powell	
H. S.....	20
Presley	
Charlene Merle .....	34
Puchee	
Emile S. ....	28
Puckett	
W. J.....	10
Purtle	
Betty Clay.....	28
Push-ma-ta-ha.....	18

## R

Rambaud	
Charlene.....	34
Rambo	
Augustus B. ....	28
Ransom	
J. D.....	15
N. L.....	15
Ransome	
Claudie.....	17
Ida.....	17
Rawlinson/Rollinson	
Ezekiel .....	37
Jesse.....	37
Joab.....	37
Rayon	
Miss Myrtle.....	20
Rector .....	20
Reece	
Edna.....	33
Reeves	
Miss Artie .....	8
V.34	
Verlen L.....	33
Reigler	
Katherine .....	35
Reinhart	
Diane K. ....	6
James P.....	6
Relf's Bluff.....	8
Rest .....	8
Reynolds	
Gen.....	7
Reynolds	
Maggie M. ....	15
Rhoads	
Alona M.....	15
Rice	
Della M.....	36
Richardson	
George .....	35
Martha.....	34
Riddick	
Judge.....	9
Riegler	
John.....	35
Nicholas, M.D.....	35
Roach	
Jullia A.....	16
Lewis S. ....	16
Robbins	
Anne Riley .....	5
Roberson	
John T.....	15

Roberson	
T. Loulu .....	16
Roberts	
Adolfas D.....	14
Allen G.....	28
Andrew .....	28
Ann .....	15
Bill .....	15
Blanch L.....	28
Charles.....	9
Charles Rupert.....	28
Drew H.....	28
Gertrude F.....	28
J. S. ....	13
James .....	13
Jimmie.....	28
Lewis .....	34
M. A.....	13
Mattie.....	14
Moses.....	34
Noah A.....	28
Steven F. ....	16
Robertson	
May or Mary J.....	16
Robinson	
David .....	37
Elizabeth Jane .....	37
James Emmitt.....	37
Roe .....	3
Roebuck	
Eber.....	28
Elva.....	28
Luther.....	28
Rogers.....	10, 20
A. N. ....	14
Calvin Landram .....	37
Capt. John.....	18, 19
Nancy.....	13
R. N.....	14
Richard.....	37
S. C. ....	14
Ross	
Ben.....	28
D. H. ....	18
James .....	28
Lois "Tony".....	28
Made L.....	28
Robert .....	8
Rounds	
Miss Maudie .....	20
Rucker	
Alphus.....	28
Clara Ann.....	28
Dobie .....	28
General D. H.....	19



Isaac "Ike".....	28	A. H. ....	20	Miss Lura.....	8
Lee.....	28	Emma.....	11	Stark	
Travis.....	28	H. T.....	11	Emma.....	18
William.....	28	shbrook		Starr	
Ruff		John G.....	37	Ezekiel.....	19
Oscar.....	8	Shelton		Stevens	
Rushing		Don S.....	33	Christopher Columbus..	34
William (Bill).....	34	Shirron		Floy DesArc.....	34
Russell		Bobby Wayne.....	29	Stewart	
Arlis.....	28	Simmons		James Barr.....	29
Joe Oliver.....	28	Mattie.....	29	Marion J.....	34
William Hugh.....	28	Simonton		Stidham	
Russell		Felix G.....	36	George W.....	18
Betty Alice.....	28	James R.....	36	Stillwell	
Russellville.....	18	Sinquefield		Thomas.....	16
<hr/>					
<b>S</b>		Charles E.....	29	Stone.....	8
Sadler		Jessie Leonard.....	29	Christopher C.....	16
Clarissa Sadler.....	37	Louis.....	29	Storey	
Samples		Mae E.....	29	H. A.....	15
Miss Beula.....	8	Thomas Fletcher.....	29	Stowe	
Sanders		Tyna T.....	29	Ida A.....	15
Birdie Bell.....	34	William Perry.....	29	Sturgis	
Ed.....	22	Skinner		Minnie Merry.....	29
Joseph "Jody".....	34	Emily E.....	35	William Pleasant.....	29
Joseph Steven.....	34	Smead		STurgis	
Laurie.....	34	Col. Hamp P.....	20	Chester Franklin.....	29
Martha J.....	34	Smith		Sudduth	
Mary Agnes.....	34	Cornelia D.....	29	Rebecca.....	34
SC		Dr. William.....	21	Suffridge	
Chesterfield District.....	36	Emma Everett.....	26	Lynda Childers.....	21
Schwietzer		George.....	8	Sullivan	
Dr. George.....	3	Georgia Ella.....	29	Miss Oma.....	8
Scoggin		Hugh D.....	29	Sulphur Springs.....	8, 20
Richmond.....	35	Ida.....	16	Summers.....	20
Scotland.....	36	Joel E.....	29	Sutton	
Scott		Macye.....	29	J. E.....	15
Craig R.....	4	Miss Mamie.....	9	Peter.....	37
Selph		Robert.....	29	<hr/>	
Emma J.....	28	Robert Sherril.....	6	<b>T</b>	
Florence.....	28	Robt.....	26	Taber	
Gail.....	28	Sallie C.....	29	W. B.....	8
Sesson		Smithville.....	8	Talbur	
Addie.....	14	Smith		Ed.....	8
L. D.....	14	J. Y., MD.....	29	Taqylor	
Shambley		Smoot		John Edwin Marvin, MD	
Alice Janette.....	28	Judge Henry P.....	20	.....	29
Herman.....	28	Spacht		Taylor	
Minnie.....	28	F. E.....	29	Carrie Benton.....	29
Olive Mae.....	28	Spencer		Edwin Samuel.....	29
Otis.....	28	Annie Laurie.....	4	Helen DeLaughter.....	29
Repsie Elaine.....	29	Frederick S.....	5	Juanita.....	29
Sharp		Frederick S., III.....	5	Philip Horace.....	30
		Spring		Virginia Belle.....	30
		James.....	37	Tenn.	
		Stalmaker			

Jackson	9
Pulaski	9
Tennessee	
Maury County	31
Tex.	
Clarkeville	18
Thornton	
J. R.	20
Thweatt	
William O.	30
Tillett	
Francis	14
Tolson	
<b>Anna Z.</b>	21
Effy C.	21
G. L.	21
Geo. H.	21
Geo. L.	21
<b>J. B.</b>	21
John B.	21
Lavinia A.	21
Lenora May	21
Louisa A.	21
Louisa Isabella	21
Lucy Griselda	21
<b>Luvenia A.</b>	21
Martha E.	21
Mary E.	21
Minnie Pearl	21
Safrona E.	21
Tomahawk	8
Tompkins	
Charles Jefferson	33
Trober	
Doree B.	15
Tryon	
Mariah	18
Tumlison	
Miss Mattie	8
Turner	
Adelle Pittman	30
Oretha (Mrs. Edwin W.)	3
Turney	
John	20

---

<b>U</b>	
Usry	
John	13

---

<b>V</b>	
Vann	
Henry C.	30

Va.	
Staunton	18
Vals	
John	5
Vanhorn	
William M.	36
Vann	
C. F.	14
Henry Felix	30
Jones W.	30
Venable	
Jane	14
Vianna	
Mattie	30
Vickers	
Joan	33

---

<b>W</b>	
Wade	
Margaret J.	11
W. W.	11
Wagner	
Mrs. Barbara J.	35
Wallen/r	
Lucy J.	15
Waller	
William	16
Wallis	
Alfred	36
Allen	36
Jack Claybourne	30
Warren	8
Watkins	
Miss Birdie	20
Watson	
Sintha E.	16
Webb	
Woodrow	33
Webber	
T. E.	20
Wells	
Charley	34
George	34
James	5
West	
Bluford	19
Buford	19
Collie	30
John Thomas	30
Western Grove	20
Whaley	
W. P.	17
Wheatley	3

Wheeler	
Margery H.	34
White	20
Carson	8
James Blackstone	35
Sabra Ann Skinner Corbett	34
Whitley	
W.	10
Wiley	
Mrs. Jane E.	20
Williams	
A. H.	17
Hugh J.	30
James A.	30
Louis F.	30
Mattie E.	30
Milton P.	30
Wilson M.	30
Wilson	
Elizabeth	17
John	9
Merilda J.	15
Winsted	
Miss Annie	9
Wood	
A. E.	30
Infant	30
Mary Catharine "Molly"	34
W. N.	30
Wood.	
Edward A.	30
Woodard	
Jann	8, 20
Woodruff County	4
Woods	
Mrs.	5
Wooley	
Henry	35
Wooten	
James Elmore	6
Wright	
Addie	21
Lute G., Sr.	30

---

<b>Y</b>	
Yanker	
Ara Monee Burford	21
Yarbrough	
Grant	8
York	
Carol T.	35
Sarah A.	35

Young  
 John.....9  
 Pearl.....34  
 Youngblood  
 Newton .....15

---

Z  
 Zankiser  
 Eva ..... 11  
 W. H..... 11



## About Ancestors

Ancestors are to be found along with antique furniture and closet skeletons in nearly all well-regulated families. They consist of forefathers, foremothers, foreuncles and foreaunts, not to mention forecousins, who become famous in history, like, for example, being beheaded by a king, or who managed to become a governor or a mayor or something like that. This enables an ancestor to be pointed to with pardonable pride by his descendants forever more.

Come to think of it, an ancestor is one of the easiest to come by and the most fascinating objects of all of our earthly possessions. Being an ancestor consists merely of being boasted and toasted by one's descendants. Many ancestors have, therefore, been enabled to make good long after they are gone from this world. More than a few of our ancestors who departed this life as poor and obscure characters, only a few jumps ahead of the sheriff, have had the good fortune, centuries later, to become the ancestors of many ambitious families with plenty of money, fame and publicity, as a consequence of which their tombstones have had to be greatly enlarged and adorned.

Ancestors are one of the most valuable and satisfying of all of our worldly possessions. They are non-taxable and they cannot be stolen. Their upkeep is practically nothing and they do not deteriorate with age. As a matter of fact, ancestors increase in value as they become older and older. Ancestors who were here hundreds of years ago are worth a thousand times more than our grandparents.

Adam is the oldest and best known ancestor. If he were still around he would be about six thousand years old, plus, Adam had a fairly good earthly record considering the serpent, his wife, and the apple turned out to be his booby trap. But Adam is everybody's ancestor; he is taken for granted just like rain or sunshine, or like education or ignorance, or like taxes or liberty, so he does not rate a very great number of coupon books at the shopping center.

Nearly all people own and operate ancestors, even the poorest of people. Many a man who has only one shirt on his back and the other in the washing machine often can boast of having ancestors who are the envy of all his friends and neighbors.

The moral of this story is that every one should be proud of his ancestors. To be sure there were a handful or two who did not or could not walk the straight and narrow path, but what they heck—they weren't YOUR ancestors!

Author unknown.